

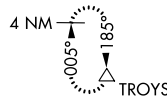
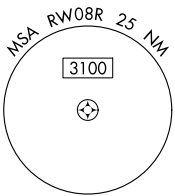
WAAS CH 48800 W08D	APP CRS 095°	Rwy Idg TDZE 1024 Apt Elev 1026	9999
--	------------------------	---	-------------

RNAV (GPS) RWY 8R

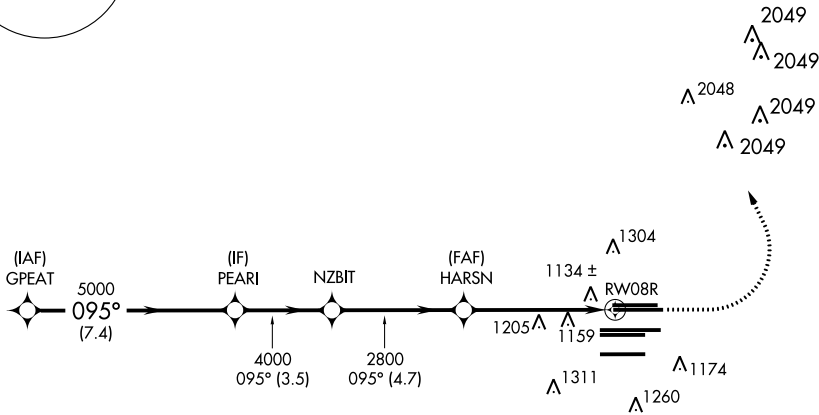
HARTSFIELD-JACKSON ATLANTA INTL (ATL)

RNP APCH.	<p>▼ For uncompensated Baro-VNAV systems, LNAV/VNAV NA below -7°C, or above 54°C. Simultaneous approach authorized with Rwy 9L or 9R or 10. LNAV procedure NA during simultaneous operations. Use of FD or AP providing RNAV track guidance required during simultaneous operations.</p>	<p>MISSED APPROACH: Climb to 1500 then climbing left turn to 3500 direct TROYS and hold.</p>
-----------	--	--

D-ATIS ARR 119.65 DEP 125.55	ATLANTA APP CON 127.9 379.9	ATLANTA TOWER 8L-26R 8R-26L 9L-27R 9R-27L 10-28 RWYS 119.1 125.325 123.85 119.3 119.5 254.4 PRM 126.9	ALL RWYS 121.9	GND CON (8L-26R,8R-26L) (9L-27R,9R-27L) 10-28 121.75 121.65 254.4	ALL RWYS
--	--	--	-----------------------------	--	-------------



CLNC DEL	CPDLC
118.1	



RADAR REQUIRED

VGSi and RNAV glidepath not coincident (VGSi Angle 3.00/TCH 67).				
GPEAT		PEARI	NZBIT	HARSN
5000	5000	4000	2800	2800
GP 3.00° TCH 53	095°	095°	095°	095°
7.4 NM	3.5 NM	4.7 NM	4.2 NM	1.2 NM
CATEGORY	A	B	C	D
LPV DA		1282/40	258 (300-¾)	
LNAV/VNAV DA		1516-1⅓	492 (500-1⅓)	
LNAV MDA	1480/55	456 (500-1)	1480-1⅓	456 (500-1⅓)

ELEV	1026	TDZE	1024
------	------	------	------

095° to RWY08R
 1135 ±
 1112 ±
 1073 ±
 1059
 12390
 9000 X 150
 9929 X 150
 9000 X 150
 1186
 1151
 1041 ±
 1030 ±
 1093
 1193
 * LNAV only
 * 1.2 NM to RWY08R

HIRL all Rwws
 TDZ/CL Rwws 8L, 9R,
 10, 26R, 27L and 28

SE-4, 06 DEC 2018 to 03 JAN 2019

SE-4, 06 DEC 2018 to 03 JAN 2019