

RNAV (GPS) PRM RWY 26L (SIMULTANEOUS CLOSE PARALLEL) HARTSFIELD-JACKSON ATLANTA INTL (ATL)

WAAS CH 56300 W26A	APP CRS 275°	Rwy Idg TDZE 996 Apt Elev 1026	9999
---------------------------------	------------------------	--	-------------

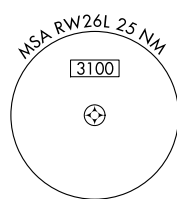
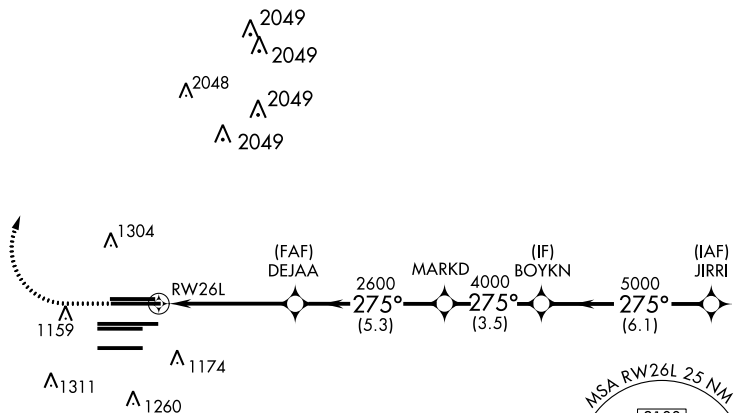
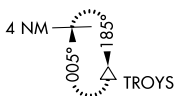
▼ For uncompensated Baro-VNAV systems, LNAV/VNAV NA below -7°C (20°F) or above 54°C (130°F). DME/DME RNP-0.3 NA. For inop MALSR, increase LPV all Cats visibility to RVR 4500 and LNAV/VNAV all Cats visibility to RVR 6000. Simultaneous close parallel approach authorized with ILS PRM and RNAV PRM Rwy 27R or 27L or 28, or Rwys 27R and 28, or Rwys 27L and 28. Dual VHF Comm required. Use of FD or AP providing RNAV track guidance required during simultaneous operations. See additional requirements on AAUP.



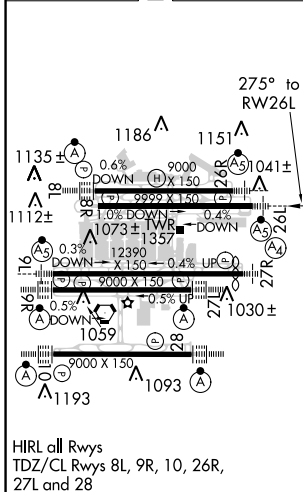
MISSED APPROACH:
Climb to 1500 then climbing right turn to 3500 direct TROYS and hold.

D-ATIS ARR 119.65 DEP 125.55	ATLANTA APP CON 127.9 379.9	ATLANTA TOWER ALL 8L-26R 8R-26L 9L-27R 9R-27L 10-28 RWYS 119.1 125.325 123.85 119.3 119.5 254.4 PRM 126.9	GND CON ALL RWYS (8L-26R,8R-26L) (9L-27R,9R-27L) 10-28 121.9 121.75 121.65 254.4
--	---------------------------------------	--	---

CLNC DEL 118.1	CPDLC
--------------------------	-------

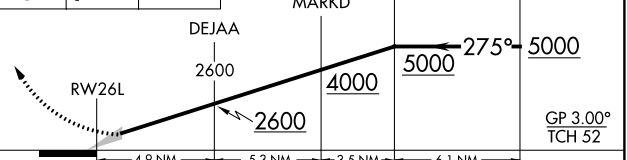


ELEV 1026	D	TDZE 996
-----------	----------	----------



RADAR REQUIRED

1500	3500	TROYS	VGSI and RNAV glidepath not coincident (VGSI Angle 3.00/TCH 63).
------	------	-------	--



MARKD	DEJAA	BOYKN	JIRRI	
2600	2600	4000	5000	
GP 3.00° TCH 52				
CATEGORY	A	B	C	D
LPV DA		1281/24	285 (300-½)	
LNAV/VNAV DA		1360/35	364 (400-½)	

RNAV (GPS) PRM RWY 26L (SIMULTANEOUS CLOSE PARALLEL)

SE-4, 06 DEC 2018 to 03 JAN 2019

SE-4, 06 DEC 2018 to 03 JAN 2019