

ATLANTA, GEORGIA

AL-26 (FAA)

18256

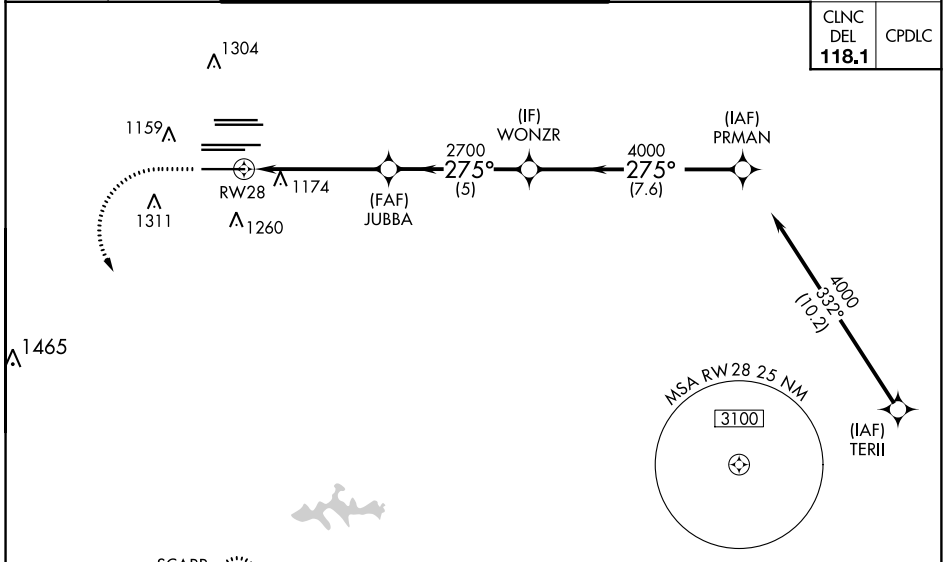
RNAV (GPS) PRM Y RWY 28 (SIMULTANEOUS CLOSE PARALLEL) HARTSFIELD-JACKSON ATLANTA INTL (ATL)

WAAS CH 61299 W28A	APP CRS 275°	Rwy Idg TDZE Apt Elev	9000 998 1026
--	------------------------	-----------------------------	--

For uncompensated Baro-VNAV systems, LNAV/VNAV NA below -7°C (20°F) or above 54°C (130°F). DME/DME RNP-0.3 NA. Simultaneous close parallel approach authorized with ILS PRM and RNAV PRM Rwy 26R or 26L or 27R or 27L, or Rwy 26R and 27R, or Rwy 26R and 27L, or Rwy 26L and 27R, or Rwy 26L and 27L. Use of FD or AP providing RNAV track guidance required during simultaneous operations. Dual VHF Comm required. See additional requirements on AAUP.

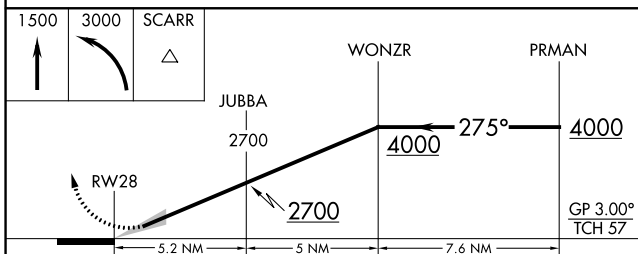
ALSF-2
MISSED APPROACH: Climb to 1500 then climbing left turn to 3000 direct SCARR and hold.

D-ATIS ARR 119.65 DEP 125.55	ATLANTA APP CON 127.9 379.9	ATLANTA TOWER 8L-26R 8R-26L 9L-27R 9R-27L 10-28 RWYS 119.1 125.325 123.85 119.3 119.5 254.4 PRM 133.425	ALL RWYS 121.9 121.75 121.65 254.4	GND CON 8L-26R,8R-26L 9L-27R,9R-27L 10-28 RWYS 121.9 121.75 121.65 254.4
--	---------------------------------------	--	--	---

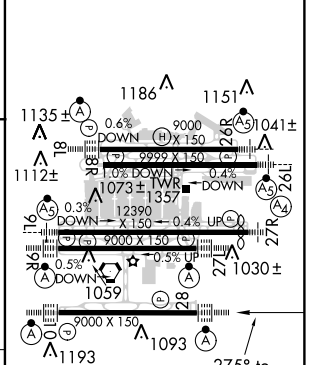


CLNC DEL 118.1	CPDLC
-----------------------------	-------

RADAR REQUIRED



ELEV 1026 TDZE 998



CATEGORY	A	B	C	D
LPV DA		1198/18	200 (200-½)	
LNAV/VNAV DA		1250/24	252 (300-½)	

GP 3.00°
TCH 57
HIRL all Rwy 28
TDZ/CL Rwy 8L, 9R, 10, 26R, 27L and 28

ATLANTA, GEORGIA Orig-A 12OCT17 33°38'N-84°26'W HARTSFIELD-JACKSON ATLANTA INTL (ATL)
RNAV (GPS) PRM Y RWY 28 (SIMULTANEOUS CLOSE PARALLEL)

SE-4, 06 DEC 2018 to 03 JAN 2019

SE-4, 06 DEC 2018 to 03 JAN 2019