


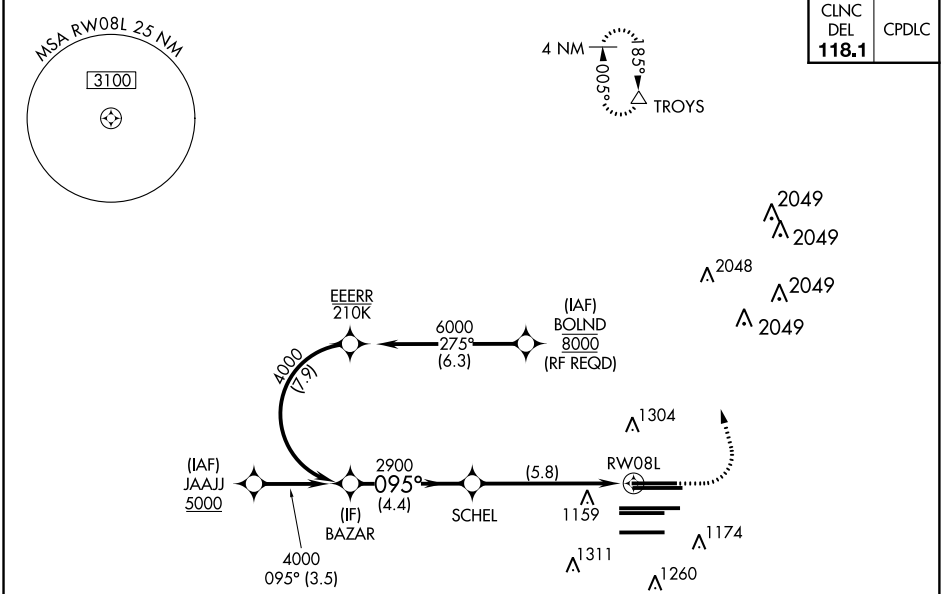
RNAV (RNP) Z RWY 8L HARTSFIELD-JACKSON ATLANTA INTL (ATL)

APP CRS	Rwy Idg	8800
095°	TDZE	1015
	Apt Elev	1026

▽ For uncompensated Baro-VNAV systems, procedure NA below -8°C (18°F) or above 54°C (130°F). GPS required. Simultaneous approach authorized. Arrival from BOLND NA during simultaneous triple approaches. For inop ALS, increase RNP 0.30 all Cats visibility to 1 $\frac{1}{2}$ SM.

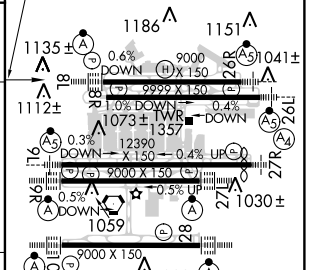
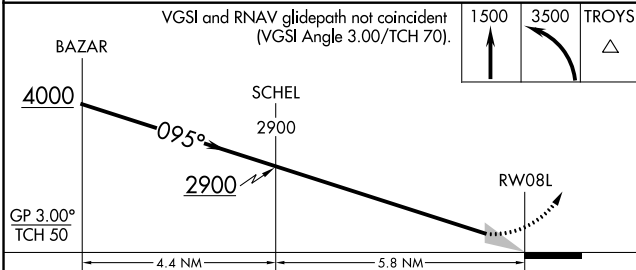
ALS-F-2  MISSED APPROACH: Climb to 1500 then climbing left turn to 3500 direct TROYS and hold.

D-ATIS	ATLANTA APP CON	ATLANTA TOWER					ALL RWYS	GND CON	ALL RWYS
ARR 119.65		8L-26R	8R-26L	9L-27R	9R-27L	10-28	(8L-26R,8R-26L)	(9L-27R,9R-27L)	10-28
DEP 125.55	127.9 379.9	119.1	125.325	123.85	119.3	119.5	121.9	121.75	121.65 254.4



CLNC DEL	CPDLC
118.1	

ELEV 1026	D	TDZE 1015
-----------	----------	-----------



CATEGORY	A	B	C	D
RNP 0.15 DA		1360/30	345 (400- $\frac{1}{2}$)	
RNP 0.30 DA		1437/50	422 (500-1)	

AUTHORIZATION REQUIRED

HIRL all Rwy's
TDZ/CL Rwy's 8L, 9R, 10, 26R, 27L and 28

SE-4, 06 DEC 2018 to 03 JAN 2019

SE-4, 06 DEC 2018 to 03 JAN 2019