

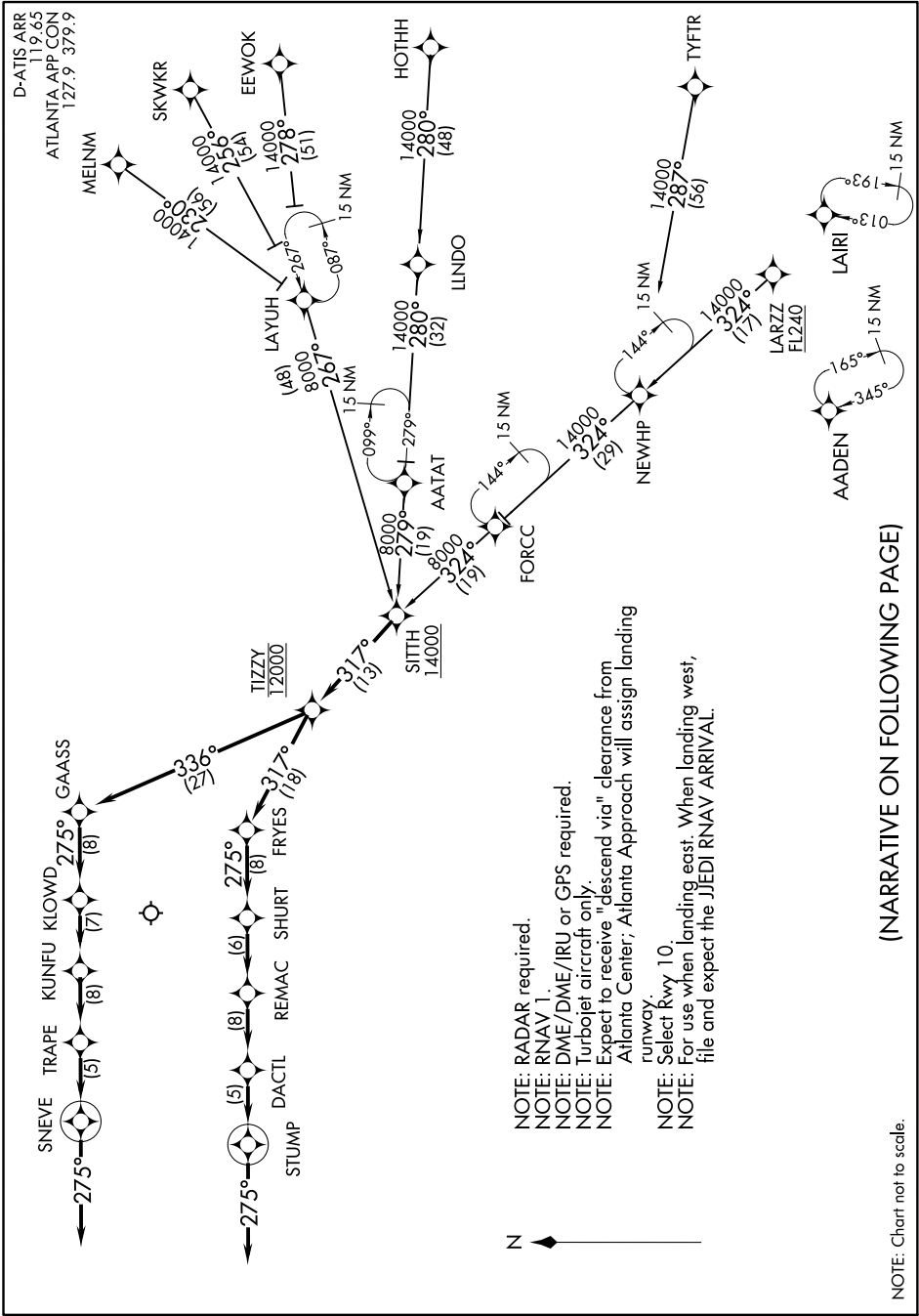
(SITH.SITH2) 18032

SITH TWO ARRIVAL(RNAV)

AL-26 (FAA)

HARTSFIELD-JACKSON ATLANTA INTL (ATL)
ATLANTA, GEORGIA

SE-4, 06 DEC 2018 to 03 JAN 2019



- NOTE: RADAR required.
- NOTE: RNAV 1.
- NOTE: DME/DME/IRU or GPS required.
- NOTE: Turbojet aircraft only.
- NOTE: Expect to receive "descend via" clearance from Atlanta Center; Atlanta Approach will assign landing runway.
- NOTE: Select Rwy 10.
- NOTE: For use when landing east. When landing west, file and expect the JJEDI RNAV ARRIVAL.

(NARRATIVE ON FOLLOWING PAGE)

NOTE: Chart not to scale.

SE-4, 06 DEC 2018 to 03 JAN 2019

SITH TWO ARRIVAL(RNAV)
(SITH.SITH2) 01FEB18

HARTSFIELD-JACKSON ATLANTA INTL (ATL)
ATLANTA, GEORGIA