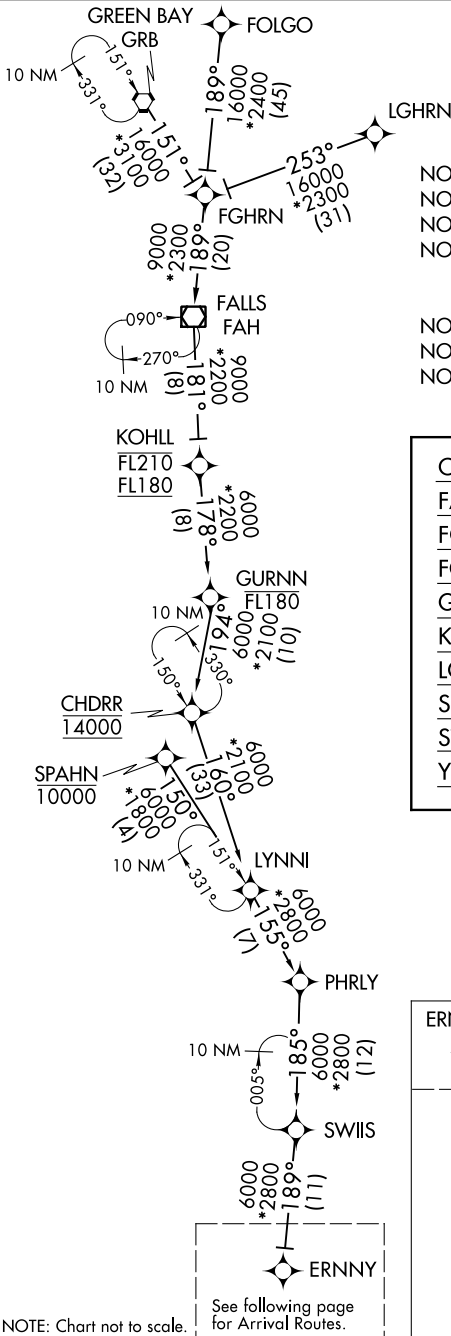


ERNNY FOUR ARRIVAL (RNAV) Transition Routes

CHICAGO, ILLINOIS

CHICAGO APP CON
119.0 393.1
D-ATIS
135.4 282.225



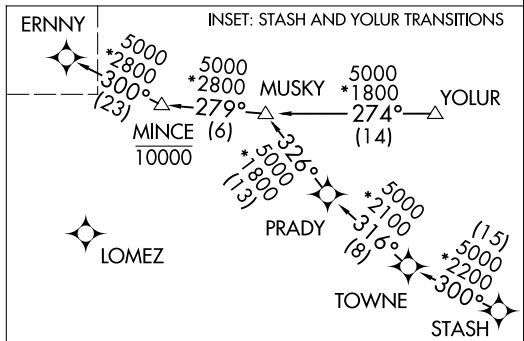
- NOTE: RADAR required.
- NOTE: RNAV 1.
- NOTE: DME/DME/IRU or GPS required.
- NOTE: Landing Rwy 4L/R, 15, 22L/R, 27L/R, 28C/R: Expect RADAR vectors to final approach course after ERNNY.
- NOTE: YOLUR transition - ATC assigned only.
- NOTE: STASH transition - ATC assigned only.
- NOTE: SPAHN transition: For Milwaukee terminal area departures only.

- CHDRR TRANSITION (CHDRR.ERNNY4):
- FALLS TRANSITION (FAH.ERNNY4):
- FGHRN TRANSITION (FGHRN.ERNNY4):
- FOLGO TRANSITION (FOLGO.ERNNY4):
- GREEN BAY TRANSITION (GRB.ERNNY4):
- KOHL TRANSITION (KOHLL.ERNNY4):
- LGHRN TRANSITION (LGHRN.ERNNY4):
- SPAHN TRANSITION (SPAHN.ERNNY4):
- STASH TRANSITION (STASH.ERNNY4):
- YOLUR TRANSITION (YOLUR.ERNNY4):

(CONTINUED ON FOLLOWING PAGE)

NOTE: Chart not to scale.

See following page for Arrival Routes.



ERNNY FOUR ARRIVAL (RNAV) Transition Routes

EC-3, 06 DEC 2018 to 03 JAN 2019

EC-3, 06 DEC 2018 to 03 JAN 2019