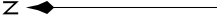
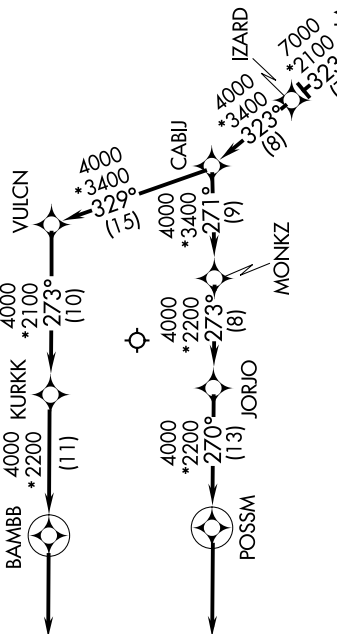


ESSPO THREE ARRIVAL (RNAV)

CHICAGO APP CON
119.0 393.1
D-ATIS
135.4 282.225



NOTE: RADAR required.
NOTE: RNAV 1.
NOTE: DME/DME/IRU or GPS required.
NOTE: ATC assigned only.



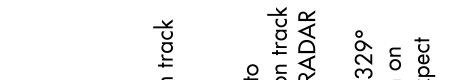
VERTICAL NAVIGATION PLANNING INFORMATION
Expect 16000

VERTICAL NAVIGATION PLANNING INFORMATION
Expect 12000

ARRIVAL ROUTE DESCRIPTION

- FORT WAYNE TRANSITION (FWA.ESSPO3):
- MARION TRANSITION (MZZ.ESSPO3):
- NOLINN TRANSITION (NOLINN.ESSPO3):
- WATSN TRANSITION (WATSN.ESSPO3):

From ESSPO on track 318° to LAACY, then on track 323° to IZARD, then on track 323° to CABIJ.
 LANDING RWYS 4L/R, 10L/C/R, 15, 22L/R, 27L/R, 28L/C/R: From CABIJ on track 271° to MONKZ, then on track 273° to JORJO, then on track 270° to POSSM, then on track 270°. Expect RADAR vectors to final approach course.
 LANDING RWYS 9L/R: From CABIJ on track 329° to VULCN, then on track 273° to KURKK, then on track 273° to BAMB, then on track 273°. Expect RADAR vectors to final approach course.



NOTE: Chart not to scale.