

LOC/DME I-SXH 108.95 Chan 26(Y)	APP CRS 093°	Rwy Idg 10540 TDZE 669 Apt Elev 680
--	------------------------	--

ILS RWY 10C (CAT II & III)

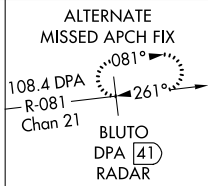
CHICAGO O'HARE INTL (ORD)

Simultaneous approach authorized. DME or RADAR required. CAT II RVR 1000 authorized with specific OPSPEC, MSPEC, or LOA approval and use of autoland or HUD to touchdown.

ALSF-2 MISSED APPROACH: Climb to 4000 on heading 093° and CGT VORTAC R-336 to CGT VORTAC and hold.

CHICAGO APP CON 119.0 393.1	O'HARE TOWERS 128.15 348.0 (Rwy 9L/27R) 133.0 348.0 (10R/28L) 120.75 121.15 126.9 132.7 348.0 (CENTER)			GND CON (TWR CENTER) 124.125 (TWR NORTH) 121.75 (OBND) 118.05 (TWR SOUTH) 121.9 (IBND) 226.675 (ALL TWRs)	CLNC DEL 121.6
---------------------------------------	--	--	--	---	--------------------------

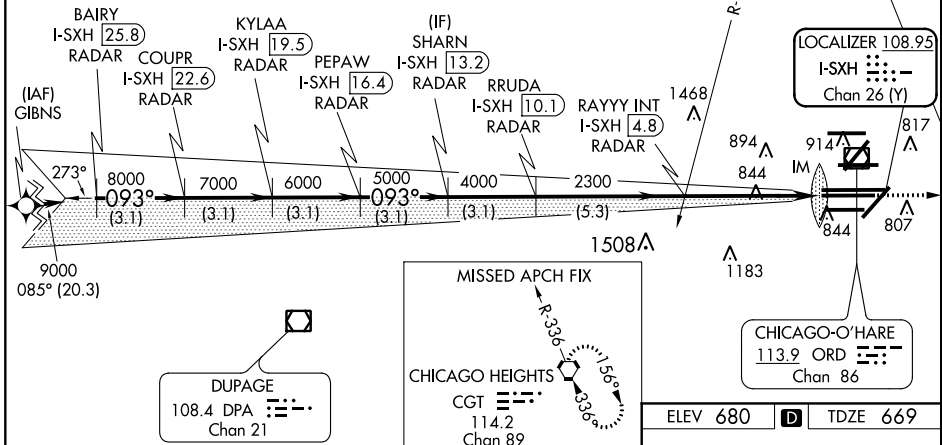
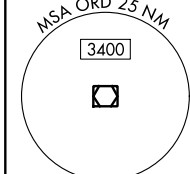
D-ATIS
135.4
282.225



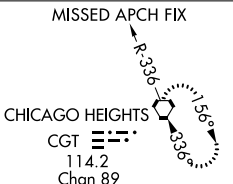
NORTHBROOK
113.0 OBK
Chan 77

CPDLC

RNAV 1-GPS or RADAR REQUIRED

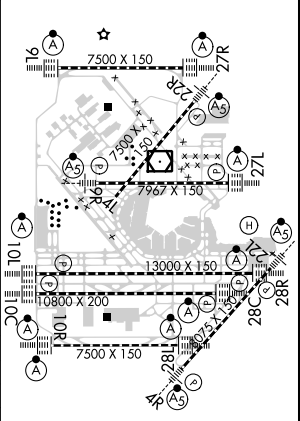
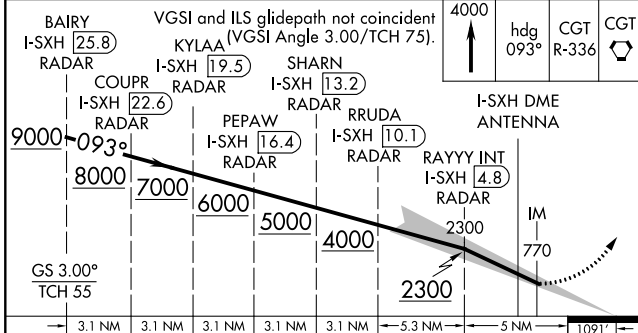


DUPAGE
108.4 DPA
Chan 21



CHICAGO O'HARE
113.9 ORD
Chan 86

ELEV 680 TDZE 669



BAIRY I-SXH [25.8] RADAR	COUPR I-SXH [22.6] RADAR	KYLAA I-SXH [19.5] RADAR	PEPAW I-SXH [16.4] RADAR	SHARN I-SXH [13.2] RADAR	RRUDA I-SXH [10.1] RADAR	RAYYY INT I-SXH [4.8] RADAR	I-SXH DME ANTENNA
VGSi and ILS glidepath not coincident (VGSi Angle 3.00/TCH 75).							
3.1 NM			3.1 NM		5.3 NM		5 NM
CATEGORY	A			B		D	
S-ILS 10C	CAT II RA 102/12 100 DA 769						
S-ILS 10C	CAT III RVR 06						

CATEGORY II and III ILS - SPECIAL AIRCREW & AIRCRAFT CERTIFICATION REQUIRED

HIRL all Rwys
TDZ/CL all Rwys except 4L

EC-3, 06 DEC 2018 to 03 JAN 2019

EC-3, 06 DEC 2018 to 03 JAN 2019