

LOC/DME I-SXH 108.95 Chan 26(Y)	APP CRS 093°	Rwy Idg 10540 TDZE 669 Apt Elev 680
--	------------------------	--

ILS RWY 10C (SA CAT I)

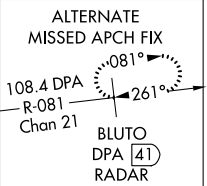
CHICAGO O'HARE INTL (ORD)

Simultaneous approach authorized. DME or RADAR required. Requires specific OPSPEC, MSPEC, or LOA approval and use of HUD to DH.

ALSF-2 MISSED APPROACH: Climb to 4000 on heading 093° and CGT VORTAC R-336 to CGT VORTAC and hold.

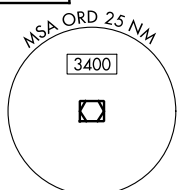
CHICAGO APP CON 119.0 393.1	O'HARE TOWERS 128.15 348.0 (Rwy 9L/27R) 133.0 348.0 (10R/28L) 120.75 121.15 126.9 132.7 348.0 (CENTER)	GND CON (TWR CENTER) 124.125 (TWR NORTH) 121.75 (OBND) 118.05 (TWR SOUTH) 121.9 (IBND) 226.675 (ALL TWRs) 134.15	CLNC DEL 121.6
---------------------------------------	--	---	--------------------------

D-ATIS
135.4
282.225

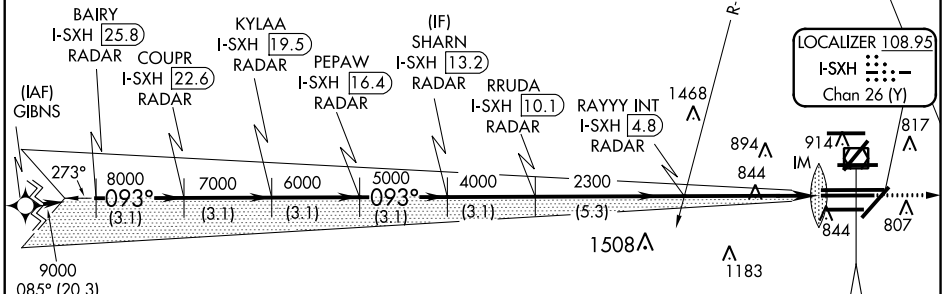


NORTHBROOK
113.0 OBK Chan 77

CPDLC



RNAV 1-GPS or RADAR REQUIRED

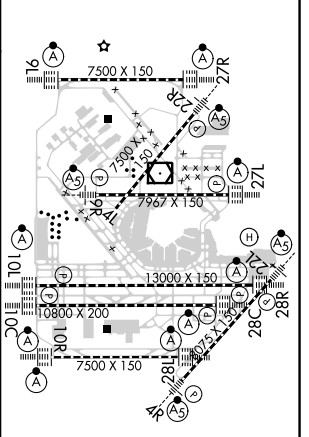
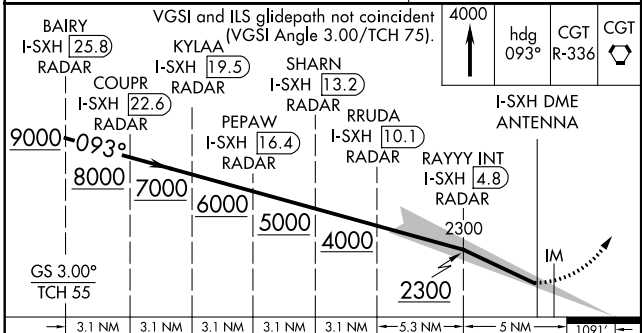


DUPAGE
108.4 DPA Chan 21

MISSED APCH FIX
CHICAGO HEIGHTS
CGT 114.2 Chan 89

CHICAGO-O'HARE
113.9 ORD Chan 86

ELEV 680 TDZE 669



CATEGORY	A	B	C	D
5-ILS 10C		RA 148/14	150 DA 819	

SA CATEGORY I ILS - SPECIAL AIRCREW & AIRCRAFT CERTIFICATION REQUIRED

HIRL all Rwy's
TDZ/CL all Rwy's except 4L

EC-3, 06 DEC 2018 to 03 JAN 2019

EC-3, 06 DEC 2018 to 03 JAN 2019