

LOC/DME I-MED 111.1 Chan 48	APP CRS 093°	Rwy Idg 12246 TDZE 672 Apt Elev 680
---	------------------------	--

ILS RWY 10L (CAT II & III)

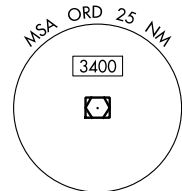
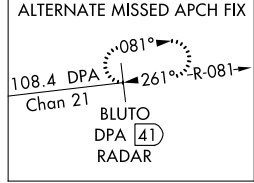
CHICAGO-O'HARE INTL (ORD)

Simultaneous approach authorized. DME or RADAR required. **ALSF-2**

MISSED APPROACH: Climb to 4000 on heading 093° and on CGT VORTAC R-336 to CGT VORTAC and hold.

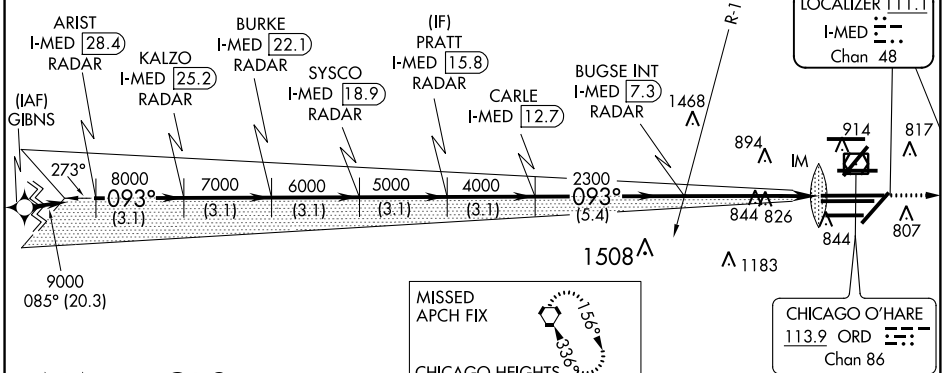
CHICAGO APP CON 119.0 393.1	O'HARE TOWERS 128.15 348.0 (Rwy 9L/27R) 133.0 348.0 (10R/28L) 120.75 121.15 126.9 132.7 348.0 (CENTER)	GND CON (TWR CENTER) 121.75 (OBND) 118.05 (TWR NORTH) 121.9 (TWR SOUTH) 226.675 (ALL TWRS)	121.75 (OBND) 121.9 (OBND) 134.15	CLNC DEL 121.6
---------------------------------------	--	--	--	--------------------------

D-ATIS
135.4
282.225

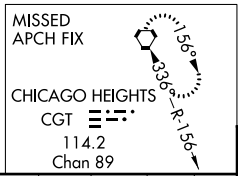


NORTHBROOK
113.0 OBK
Chan 77

CPDLC

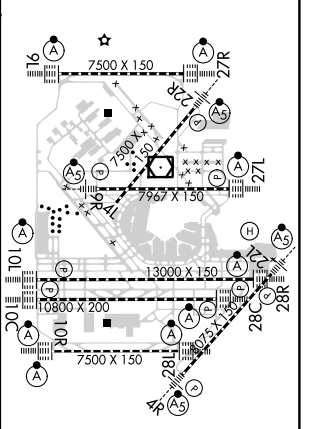


RNAV 1-GPS or RADAR REQUIRED



ARIST I-MED 28.4 RADAR	KALZO I-MED 25.2 RADAR	BURKE I-MED 22.1 RADAR	SYSCO I-MED 18.9 RADAR	PRATT I-MED 15.8 RADAR	CARLE I-MED 12.7 RADAR	BUGSE INT I-MED 7.3 RADAR	IM
3.1 NM	3.1 NM	3.1 NM	3.1 NM	3.1 NM	5.4 NM	4.9 NM	1113'
VGSI and ILS glideslope not coincident		BURKE (VGSI Angle 3.00/TCH 74).		4000		hdg 093°	CGT R-336
GS 3.00° TCH 56		773		2300			

ELEV 680 TDZE 672



CATEGORY	A	B	C	D
S-ILS 10L	CAT II RA 95/12 100 DA 772			
S-ILS 10L	CAT III RVR 06			

CATEGORY II and III ILS - SPECIAL AIRCREW & AIRCRAFT CERTIFICATION REQUIRED

HIRL all Rwys
TDZ/CL all Rwys except 4L

EC-3, 06 DEC 2018 to 03 JAN 2019

EC-3, 06 DEC 2018 to 03 JAN 2019