

LOC/DME I-MED 111.1 Chan 48	APP CRS 093°	Rwy Idg 12246 TDZE 672 Apt Elev 680
---	------------------------	--

ILS RWY 10L (SA CAT I)

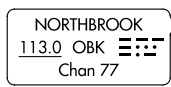
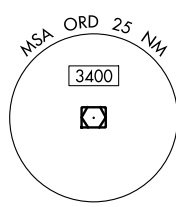
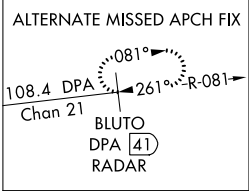
CHICAGO-O'HARE INTL (ORD)

Simultaneous approach authorized. DME or RADAR required. Requires specific OPSPEC, MSPEC, or LOA approval and use of HUD to DH.

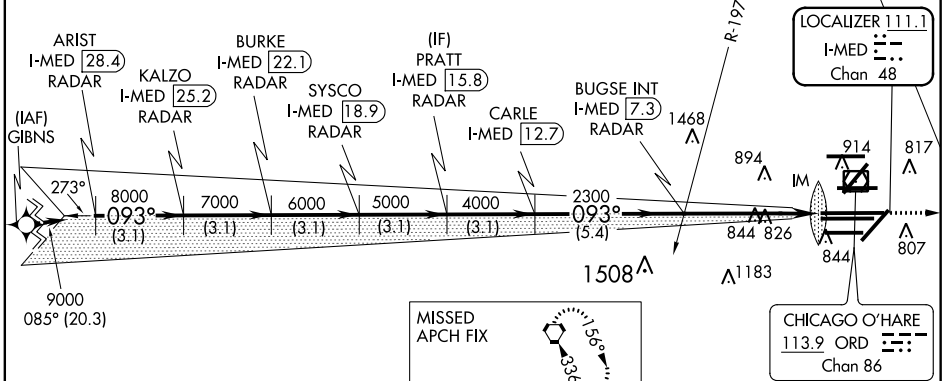
MISSED APPROACH: Climb to 4000 on heading 093° and on CGT VORTAC R-336 to CGT VORTAC and hold.

CHICAGO APP CON 119.0 393.1	O'HARE TOWERS 128.15 348.0 (Rwy 9L/27R) 133.0 348.0 (10R/28L) 120.75 121.15 126.9 132.7 348.0 (CENTER)	GND CON (TWR CENTER) 124.125 (TWR NORTH) 121.75 (OBND) 118.05 (TWR SOUTH) 121.9 (IBND) 226.675 (ALL TWRs) 134.15	CLNC DEL 121.6
---------------------------------------	--	---	--------------------------

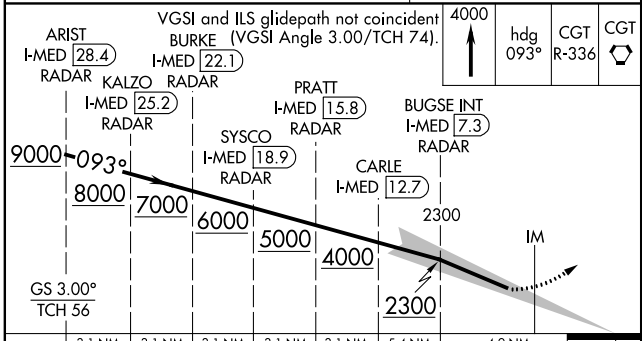
D-ATIS
135.4
282.225



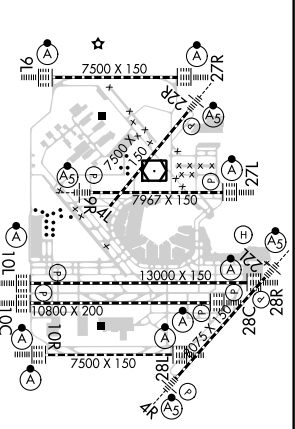
CPDLC



RNAV 1-GPS or RADAR REQUIRED



ELEV 680	TDZE 672
----------	----------



3.1 NM	3.1 NM	3.1 NM	3.1 NM	3.1 NM	5.4 NM	4.9 NM	1113'
CATEGORY	A		B		C	D	
S-ILS 10L	RA 162/14		150 DA 822				

SA CATEGORY I ILS - SPECIAL AIRCREW & AIRCRAFT CERTIFICATION REQUIRED

HIRL all Rwys
TDZ/CL all Rwys except 4L

EC-3, 06 DEC 2018 to 03 JAN 2019

EC-3, 06 DEC 2018 to 03 JAN 2019