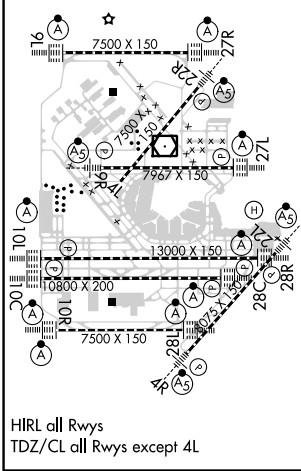
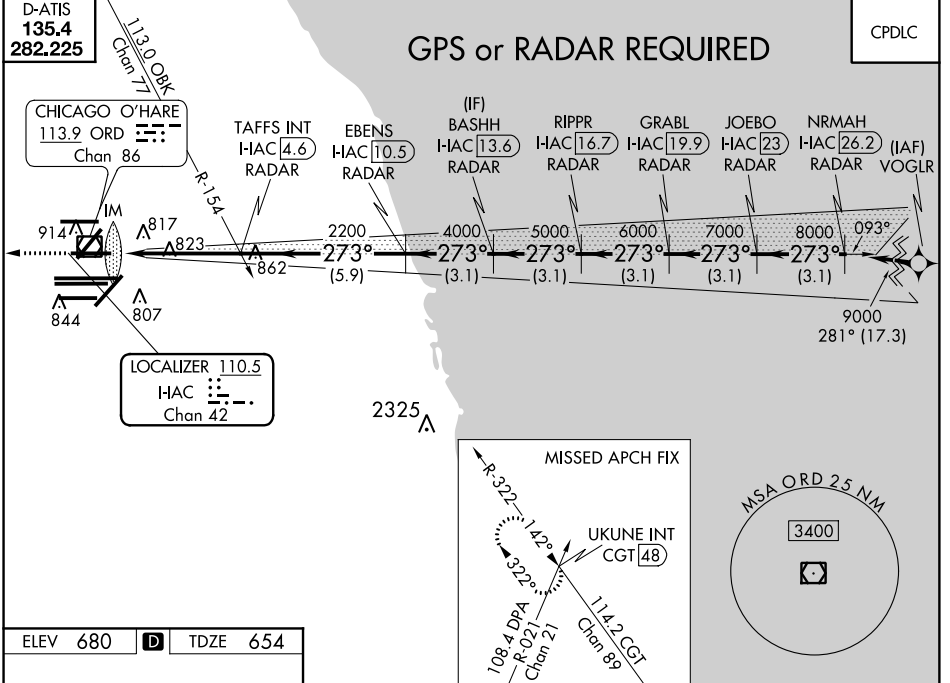


LOC/DME I-HAC <b>110.5</b> Chan 42	APP CRS <b>273°</b>	Rwy ldg 7782	TDZE 654
		Apt Elev 680	

# ILS RWY 27L (CAT II & III)

CHICAGO O'HARE INTL (ORD)

Simultaneous approach authorized. DME or RADAR required.	ALSF-2 	MISSED APPROACH: Climb to 1200 then climbing right turn to 4000 on heading 295° and on CGT VORTAC R-322 to UKUNE INT/CGT 48 DME and hold.	
		CHICAGO APP CON <b>119.0 393.1</b>	O'HARE TOWERS <b>128.15 348.0</b> (Rwy 9L/27R) <b>133.0 348.0</b> (10R/28L) <b>120.75 121.15 126.9 132.7 348.0</b> (CENTER)



1200	4000	CGT R-322	UKUNE INT	VGSI and descent angles not coincident (VGSI Angle 3.00/TCH 67).			
↑	hdg 295°						
TAFS INT I-HAC 4.6 RADAR EBENS I-HAC 10.5 RADAR IM 750		BASHH I-HAC 13.6 RADAR RIPPR I-HAC 16.7 RADAR	GRABL I-HAC 19.9 RADAR JOEBO I-HAC 23 RADAR NRMAH I-HAC 26.2 RADAR	9000 GS 3.00° TCH 55			
2200		4000	5000	6000	7000	8000	9000
4.7 NM		5.9 NM		3.1 NM	3.1 NM	3.1 NM	3.1 NM
CATEGORY	A	B		C		D	
S-ILS 27L	CAT II RA 110/12				100 DA 754		
S-ILS 27L	CAT III RVR 06						

**CATEGORY II & III ILS - SPECIAL AIRCREW & AIRCRAFT CERTIFICATION REQUIRED**

EC-3, 06 DEC 2018 to 03 JAN 2019

EC-3, 06 DEC 2018 to 03 JAN 2019