

LOC/DME I-ABU <b>111.75</b> Chan 54 (Y)	APP CRS <b>273°</b>	Rwy Idg <b>7500</b> TDZE <b>664</b> Apt Elev <b>680</b>
---	------------------------	---

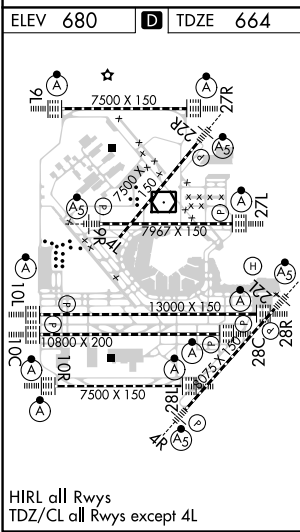
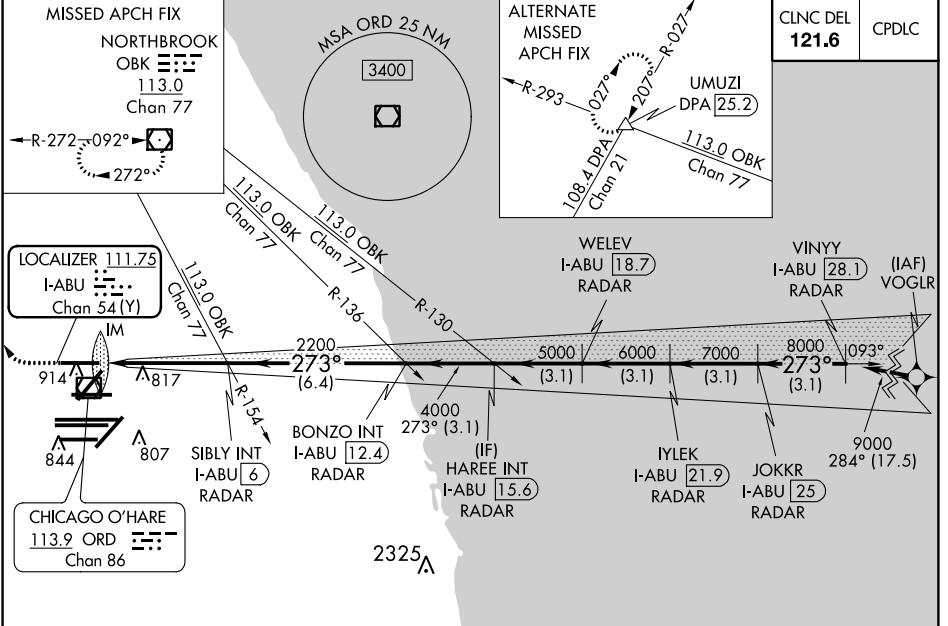
# ILS RWY 27R (CAT II & III)

CHICAGO O'HARE INTL (ORD)

Simultaneous approach authorized. DME or RADAR required. ALSF-2

MISSED APPROACH: Climb to 1100 then climbing right turn to 4000 direct OBK VOR/DME and hold, continue climb-in-hold to 4000.

D-ATIS <b>135.4</b> <b>282.225</b>	CHICAGO APP CON <b>119.0 393.1</b>	O'HARE TOWERS <b>128.15 348.0</b> (Rwy 9L/27R) <b>133.0 348.0</b> (10R/28L) <b>120.75 121.15 126.9 132.7 348.0</b> (CENTER)	GND CON (TWR NORTH) <b>124.125</b> (TWR SOUTH) <b>118.05</b> (ALL TWRs) <b>226.675</b>	(TWR CENTER) <b>121.75</b> (IBND) (TWR NORTH) <b>121.9</b> (IBND) (TWR SOUTH) <b>134.15</b>
--	---------------------------------------	--	--	---



**GPS or RADAR REQUIRED**

ELEV 680	TDZE 664					
1100	4000	OBK				
SIBLY INT I-ABU [6] RADAR	BONZO INT I-ABU [12.4] RADAR	HAREE INT I-ABU [15.6] RADAR	WELEV I-ABU [18.7] RADAR	IYLEK I-ABU [21.9] RADAR	JOKKR I-ABU [25] RADAR	VINYY I-ABU [28.1] RADAR
IM 2200	4000	5000	6000	7000	8000	9000
1135	4.7 NM	6.4 NM	3.1 NM	3.1 NM	3.1 NM	3.1 NM
CATEGORY	A	B	C	D		
S-ILS-27R	CAT II RA 101/12 100 DA 764					
S-ILS-27R	CAT III RVR 07					

**CATEGORY II & III ILS - SPECIAL AIRCREW & AIRCRAFT CERTIFICATION REQUIRED**

EC-3, 06 DEC 2018 to 03 JAN 2019

EC-3, 06 DEC 2018 to 03 JAN 2019