

LOC/DME I-VQX <b>110.75</b> Chan <b>44(Y)</b>	APP CRS <b>274°</b>	Rwy ldg TDZE Apt Elev	<b>7500</b> <b>667</b> <b>680</b>
---	------------------------	-----------------------------	---

**ILS RWY 28L (SA CAT I)**  
CHICAGO-O'HARE INTL (ORD)

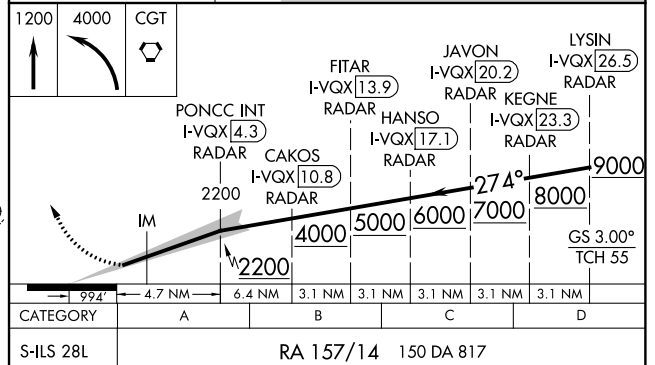
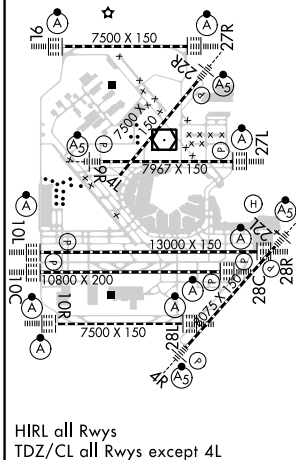
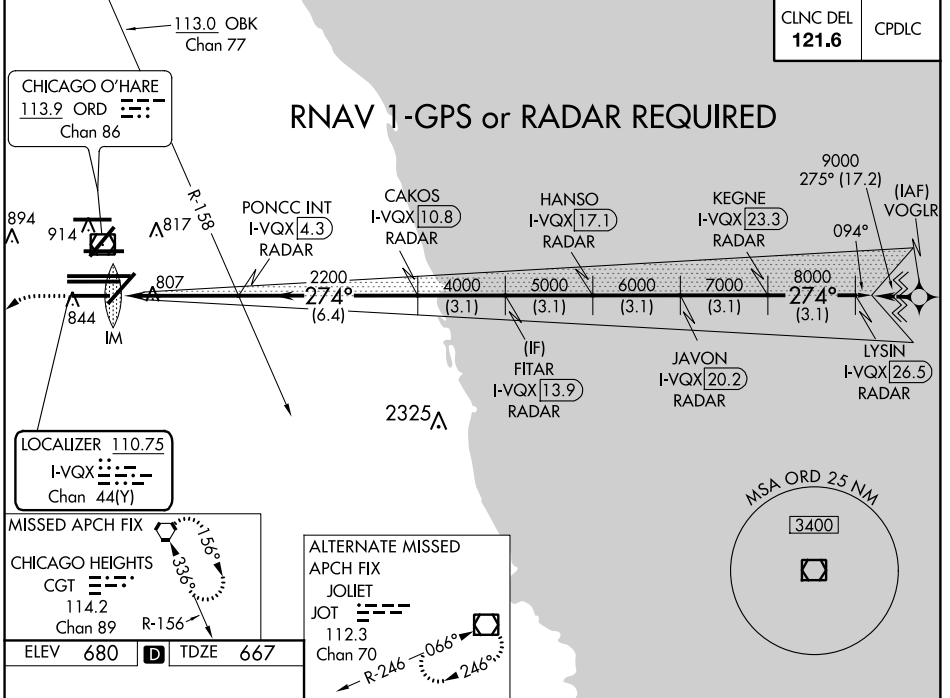
Simultaneous approach authorized. DME or RADAR required. Requires specific OPSPEC, MSPEC, or LOA approval and use of HUD to DH.

MISSED APPROACH: Climb to 1200 then climbing left turn to 4000 direct CGT VORTAC and hold.

D-ATIS <b>135.4</b> <b>282.225</b>	CHICAGO APP CON <b>119.0 393.1</b>	O'HARE TOWERS <b>128.15 348.0</b> (Rwy 9L/27R) <b>133.0 348.0</b> (10R/28L) <b>120.75 121.15 126.9 132.7 348.0</b> (CENTER)	GND CON (TWR CENTER) <b>121.75</b> (TWR NORTH) (TWR SOUTH) <b>118.05</b> (TWR SOUTH) <b>226.675</b> (ALL TWRs)	<b>121.75</b> (TWR CENTER) (TWR NORTH) (TWR SOUTH) <b>121.9</b> (TWR CENTER) (TWR NORTH) (TWR SOUTH) <b>134.15</b>
--	---------------------------------------	--	---	--

CLNC DEL <b>121.6</b>	CPDLC
--------------------------	-------

**RNAV 1-GPS or RADAR REQUIRED**



**SA CATEGORY I ILS-SPECIAL AIRCREW & AIRCRAFT CERTIFICATION REQUIRED**

EC-3, 06 DEC 2018 to 03 JAN 2019

EC-3, 06 DEC 2018 to 03 JAN 2019