

LOC/DME I-TSL 111.1 Chan 48	APP CRS 273°	Rwy ldg 13000 TDZE 651 Apt Elev 680
--	------------------------	--

ILS RWY 28R (CAT II & III)

CHICAGO-O'HARE INTL (ORD)

Simultaneous approach authorized. DME or RADAR required.

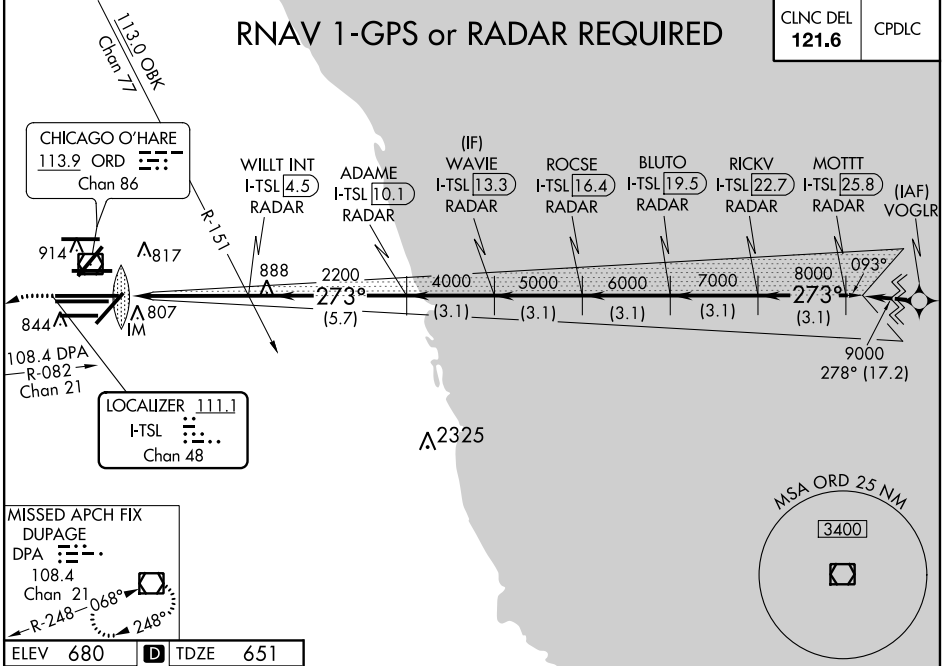
ALSIF-2

MISSED APPROACH: Climb to 1100 then climbing left turn to 4000 on heading 215° and DPA VOR/DME R-082 to DPA VOR/DME and hold.

D-ATIS 135.4 282.225	CHICAGO APP CON 119.0 393.1	O'HARE TOWERS 128.15 348.0 (Rwy 9L/27R) 133.0 348.0 (10R/28L) 132.7 348.0 (CENTER)	GND CON (TWR NORTH) 124.125 (TWR SOUTH) 118.05 (ALL TWRs) 226.675	(TWR CENTER) 121.75 (OBND) (TWR INBD) 121.9 134.15
--	---------------------------------------	--	--	---

RNAV 1-GPS or RADAR REQUIRED

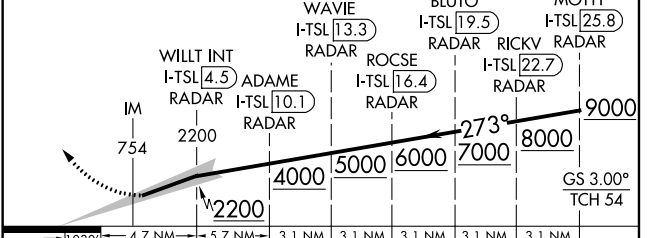
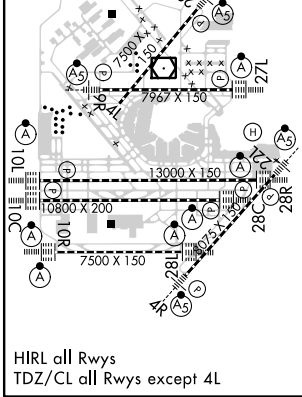
CLNC DEL 121.6	CPDLC
--------------------------	-------



ELEV 680	D	TDZE 651
----------	----------	----------

1100 4000 DPA R-082 hdg 215°

VGSI and ILS glidepath not coincident (VGSI Angle 3.00/TCH 70).



CATEGORY	A	B	C	D
S-ILS 28R	CAT II RA 97/12 100 DA 751			
S-ILS 28R	CAT III RVR 06			

CATEGORY II & III ILS - SPECIAL AIRCREW & AIRCRAFT CERTIFICATION REQUIRED