

|   |                        |  |
|---|------------------------|--|
| LOC/DME I-TSL<br><b>111.1</b><br>Chan <b>48</b> | APP CRS<br><b>273°</b> | Rwy ldg <b>13000</b><br>TDZE <b>651</b><br>Apt Elev <b>680</b> |
|---|------------------------|--|

# ILS RWY 28R (SA CAT I)

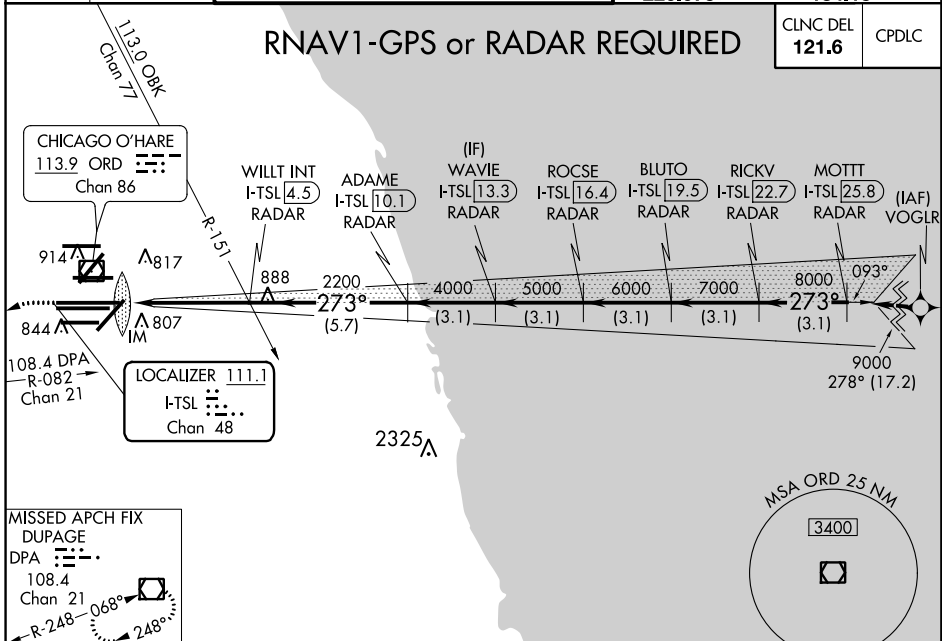
CHICAGO-O'HARE INTL (ORD)

Simultaneous approach authorized. DME or RADAR required. Requires specific OPSEC, MSPEC, or LOA approval and use of HUD to DH. **ALSF-2** MISSED APPROACH: Climb to 1100 then climbing left turn to 4000 on heading 215° and DPA VOR/DME R-082 to DPA VOR/DME and hold.

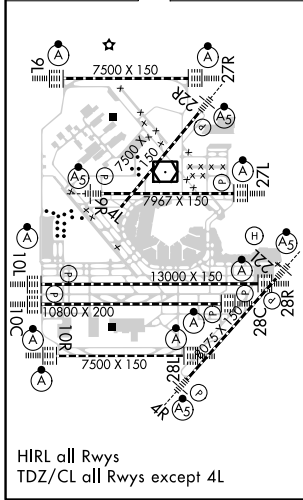
|  |                                       |  |  |   |
|--|---------------------------------------|--|--|---|
| D-ATIS<br><b>135.4</b><br><b>282.225</b> | CHICAGO APP CON<br><b>119.0 393.1</b> | O'HARE TOWERS<br><b>128.15 348.0</b> (Rwy 9L/27R) <b>133.0 348.0</b> (10R/28L) <b>120.75 121.15 126.9 132.7 348.0</b> (CENTER) | GND CON (TWR NORTH) <b>124.125</b><br>(TWR SOUTH) <b>118.05</b><br>(ALL TWRs) <b>226.675</b> | (TWR CENTER) <b>121.75</b> (OBND)<br>(TWR INBD) <b>121.9</b><br><b>134.15</b> |
|--|---------------------------------------|--|--|---|

## RNAV1-GPS or RADAR REQUIRED

|                          |       |
|--------------------------|-------|
| CLNC DEL<br><b>121.6</b> | CPDLC |
|--------------------------|-------|



|                 |          |                 |
|-----------------|----------|-----------------|
| ELEV <b>680</b> | <b>D</b> | TDZE <b>651</b> |
|-----------------|----------|-----------------|



|                           |                        |                        |   |
|---------------------------|------------------------|------------------------|---|
| 1100                      | 4000                   | DPA R-082              | VGSI and ILS glidepath not coincident (VGSI Angle 3.00/TCH 70). |
| hdg 215°                  |                        |                        |   |
| WILLT INT I-TSL 4.5 RADAR | ADAME I-TSL 10.1 RADAR | WAVIE I-TSL 13.3 RADAR | BLUTO I-TSL 19.5 RADAR  |
| ROCSE I-TSL 16.4 RADAR    | RICKV I-TSL 22.7 RADAR | MOTT I-TSL 25.8 RADAR  |   |
| 2200                      | 4000                   | 5000                   | 6000  |
| 7000                      | 8000                   | 9000                   |   |
| GS 3.00°                  | TCH 54                 |                        |   |
| 1030'                     | 4.7 NM                 | 5.7 NM                 | 3.1 NM  |
| CATEGORY                  | A                      | B                      | C   |
| S-ILS 28R                 | RA 161/14 150 DA 801   |                        |   |

### SA CATEGORY I ILS-SPECIAL AIRCREW & AIRCRAFT CERTIFICATION REQUIRED

EC-3, 06 DEC 2018 to 03 JAN 2019

EC-3, 06 DEC 2018 to 03 JAN 2019