

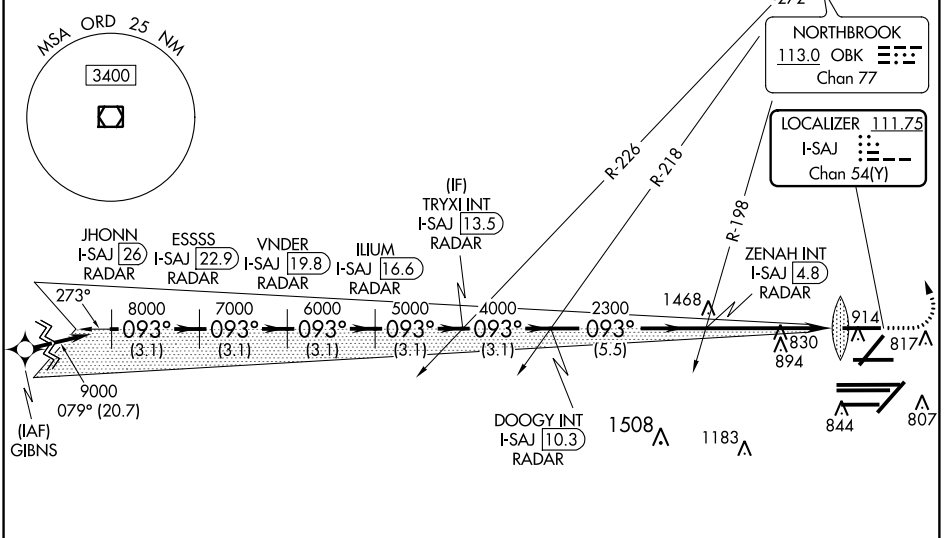
LOC/DME I-SAJ 111.75 Chan 54 (Y)	APP CRS 093°	Rwy Idg 7500	TDZE 668
		Apt Elev 680	

ILS RWY 9L (SA CAT I)

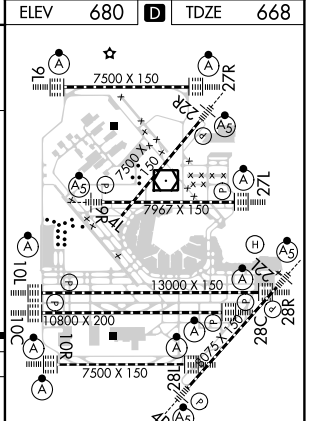
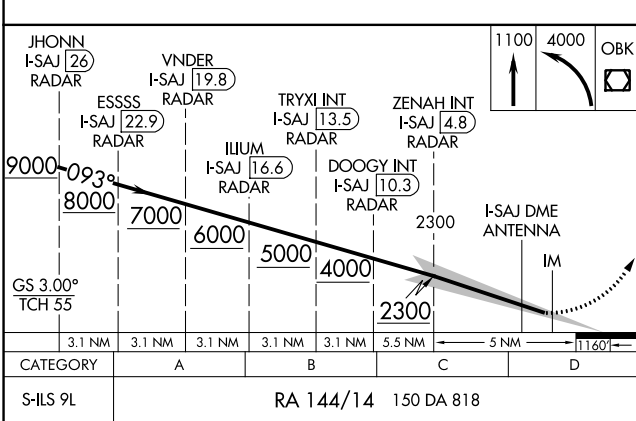
CHICAGO O'HARE INTL (ORD)

▽ Simultaneous approach authorized. DME or RADAR Required. Requires specific OPSPEC, MSPEC, or LOA approval and use of HUD to DH.	ALSIF-2 	MISSED APPROACH: Climb to 1100 then climbing left turn to 4000 direct OBK VOR/DME and hold, continue climb-in-hold to 4000.	CLNC DEL 121.6

D-ATIS 135.4 282.225	CPDLC
---	--------------



RNAV 1-GPS or RADAR REQUIRED



SA CATEGORY I ILS - SPECIAL AIRCREW & AIRCRAFT CERTIFICATION REQUIRED

EC-3, 06 DEC 2018 to 03 JAN 2019

EC-3, 06 DEC 2018 to 03 JAN 2019