

LOC I-LQQ	APP CRS	Rwy ldg	8075
110.1	225°	TDZE	654
		Apt Elev	680

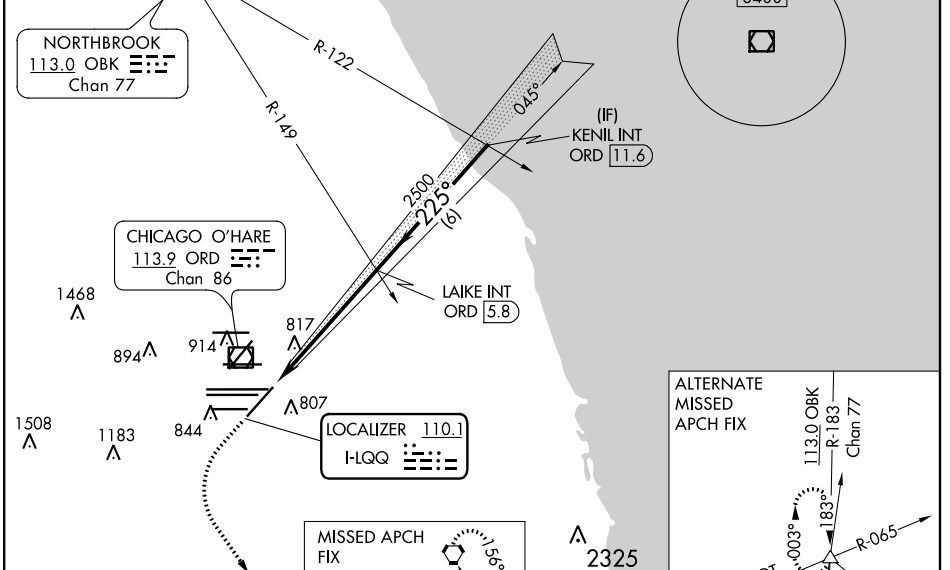
ILS or LOC RWY 22L

CHICAGO O'HARE INTL (ORD)

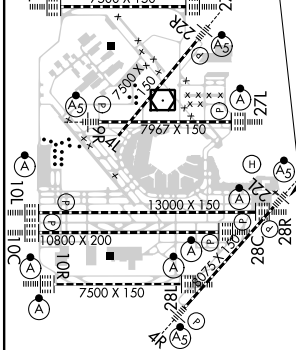
<p>Simultaneous approach authorized with Rwy 22R.</p>	<p>MALS</p>	<p>MISSED APPROACH: Climb to 1100 then climbing left turn to 4000 direct CGT VORTAC and hold.</p>
		<p>MALS</p>

CHICAGO APP CON	128.15	348.0 (Rwy 9L/27R)	133.0	348.0 (10R/28L)	124.125 (TWR CENTER)	121.75 (OBND)	CLNC DEL 121.6	
	119.0	393.1	120.75	121.15	126.9	132.7		348.0 (CENTER)
					118.05 (TWR SOUTH)	121.9 (IBND)		

D-ATIS 135.4 282.225	<h2>RADAR REQUIRED</h2>	MSA ORD 25 NM 3400	CPDLC
--	-------------------------	-----------------------	-------

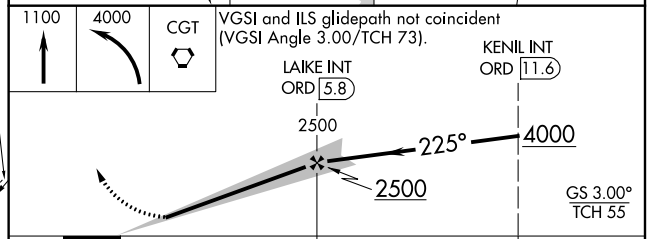


ELEV 680	D	TDZE 654
TDZ/Cl all Rwys except 4L 225° 5.6 NM from FAF		
HIRL all Rwys		



FAF to MAP 5.6 NM					
Knots	60	90	120	150	180
Min:Sec	5:36	3:44	2:48	2:14	1:52

MISSED APCH FIX	CHICAGO HEIGHTS 114.2 CGT Chan 89	ALTERNATE MISSED APCH FIX
-----------------	-----------------------------------	---------------------------



VGSI and ILS glidepath not coincident (VGSI Angle 3.00/TCH 73).	LAKE INT ORD 5.8	LAKE INT ORD 11.6	GS 3.00° TCH 55	
CATEGORY	A	B	C	D
S-ILS 22L	854/18		200 (200-½)	
S-LOC 22L	1120/24	466 (500-½)	1120/50	466 (500-1)
C CIRCLING	1220-1	540 (600-1)	1220-1½	1460-2½
			540 (600-½)	780 (800-2½)

EC-3, 06 DEC 2018 to 03 JAN 2019

EC-3, 06 DEC 2018 to 03 JAN 2019