

LOC/DME I-HAC <b>110.5</b> Chan <b>42</b>	APP CRS <b>273°</b>	Rwy ldg <b>7782</b> TDZE <b>654</b> Apt Elev <b>680</b>
---	------------------------	---

# ILS or LOC RWY 27L

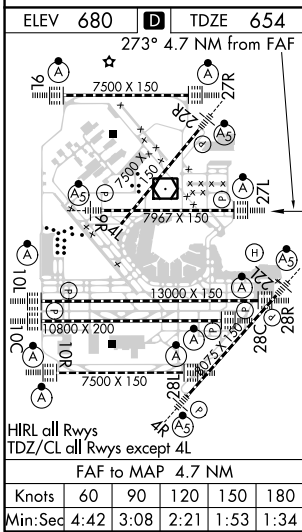
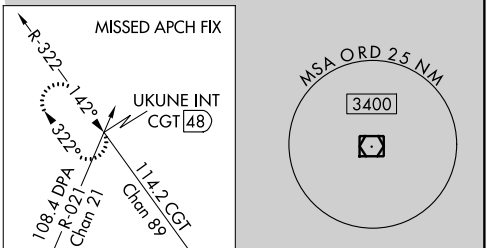
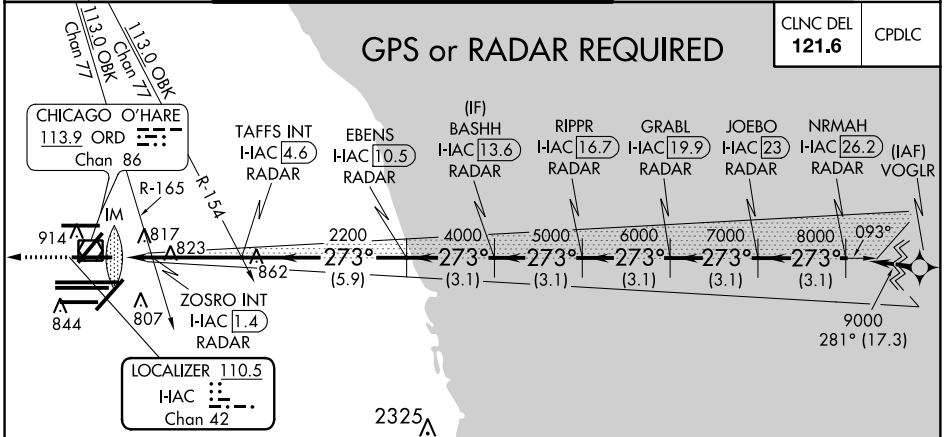
CHICAGO O'HARE INTL (ORD)

Simultaneous approach authorized. DME or RADAR required.  
For inop ALS, increase S-LOC 27L Cat C/D visibility to 1 1/2 SM.

ALS-F-2

MISSED APPROACH: Climb to 1200 then climbing right turn to 4000 on heading 295° and on CGT VORTAC R-322 to UKUNE INT/CGT 48 DME and hold.

D-ATIS <b>135.4</b> <b>282.225</b>	CHICAGO APP CON <b>119.0 393.1</b>	O'HARE TOWERS <b>128.15 348.0</b> (Rwy 9L/27R) <b>133.0 348.0</b> (10R/28L) <b>120.75 121.15 126.9 132.7 348.0</b> (CENTER)	GND CON (TWR CENTER) <b>121.75</b> (OBND) (TWR SOUTH) <b>121.9</b> (IBND) <b>226.675</b> (ALL TWSR) <b>134.15</b>
--	---------------------------------------	--	---



1200	4000	CGT R-322	UKUNE INT	VGSI and descent angles not coincident (VGSI Angle 3.00/TCH 67).			
hdg 295°				BASHH I-HAC <b>13.6</b> RADAR	GRABL I-HAC <b>19.9</b> RADAR	JOEBO I-HAC <b>23</b> RADAR	NRMAH I-HAC <b>26.2</b> RADAR
*LOC only		TAFFS INT I-HAC <b>4.6</b> RADAR	EBENS I-HAC <b>10.5</b> RADAR	RIPPR I-HAC <b>16.7</b> RADAR			
I-HAC ANTENNA		ZOSRO INT I-HAC <b>1.4</b> RADAR			9000		
I-HAC <b>0.1</b>		*1160 2200		4000	5000	6000	7000
				273°			
				GS 3.00° TCH 55			
				0.1	1.4	3.2 NM	-5.9 NM
				3.1 NM	3.1 NM	3.1 NM	3.1 NM
CATEGORY		A		B		C	
S-ILS 27L		1160/24		854/18		200 (200-1/2)	
S-LOC 27L		1160/24		506 (500-1/2)		1160/55 506 (500-1)	
		ZOSRO FIX MINIMUMS (DUAL VOR RECEIVERS OR DME REQUIRED)					
S-LOC 27L		1080/24		426 (400-1/2)		1080/40 426 (400-3/4)	

EC-3, 06 DEC 2018 to 03 JAN 2019

EC-3, 06 DEC 2018 to 03 JAN 2019