

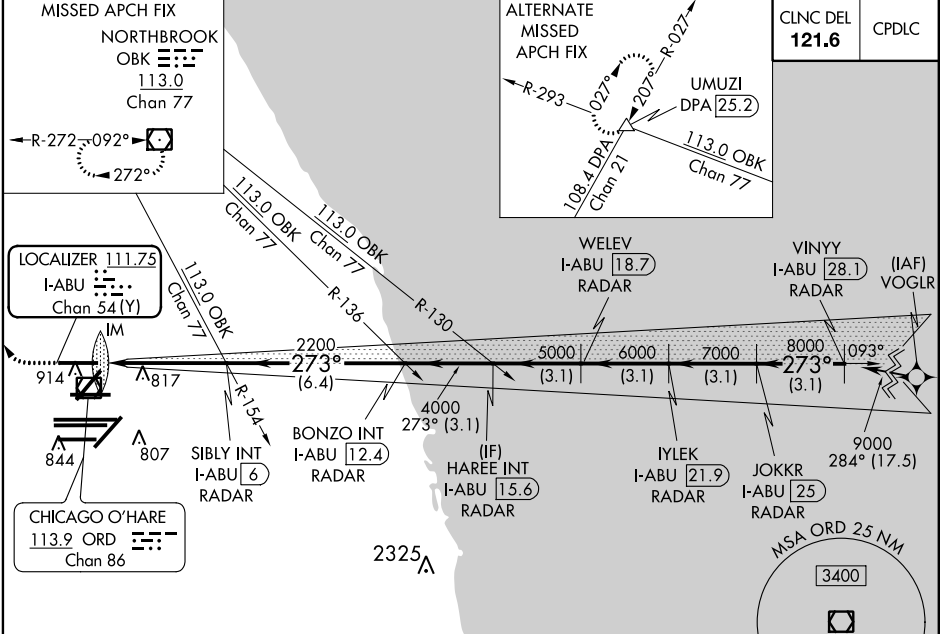
LOC/DME I-ABU 111.75 Chan 54 (Y)	APP CRS 273°	Rwy Idg 7500 TDZE 664 Apt Elev 680
---	------------------------	---

ILS or LOC RWY 27R

CHICAGO O'HARE INTL (ORD)

<p>Simultaneous approach authorized. DME or RADAR required.</p>	<p>ALSIF-2</p>	<p>MISSED APPROACH: Climb to 1100 then climbing right turn to 4000 direct OBK VOR/DME and hold, continue climb-in-hold to 4000.</p>

D-ATIS 135.4 282.225	CHICAGO APP CON 119.0 393.1	O'HARE TOWERS 128.15 348.0 (Rwy 9L/27R) 133.0 348.0 (10R/28L) 132.7 348.0 (CENTER)				GND CON (TWR NORTH) 124.125 (TWR SOUTH) 118.05 (ALL TWS) 226.675	(TWR CENTER) 121.75 (OBND) 121.9 (IBND) 134.15
--	---------------------------------------	--	--	--	--	--	--



ELEV 680 TDZE 664 273° 4.7 NM from FAF

Diagram details: Shows the approach path with altitudes of 1100, 4000, 2200, 2000, 1800, 1600, 1400, 1200, 1000, 800, 600, 400, 200. Distances: 0.2, 1.0, 3.4, 6.4, 3.1, 3.1, 3.1, 3.1, 3.1 NM. Category: A, B, C, D. S-ILS 27R: 864/18, 200 (200-1/2). S-LOC 27R: 1120/24, 456 (500-1/2), 1120/45, 456 (500-7/8).

Category	A	B	C	D
S-ILS 27R	864/18 200 (200-1/2)			
S-LOC 27R	1120/24	456 (500-1/2)	1120/45	456 (500-7/8)

HIRL all Rwys
TDZ/CL all Rwys except 4L
FAF to MAP 4.7 NM

Knots	60	90	120	150	180
Min:Sec	4:42	3:08	2:21	1:53	1:34

GPS or RADAR REQUIRED

*LOC only.

Diagram details: Shows the approach path with altitudes of 1100, 4000, 2200, 2000, 1800, 1600, 1400, 1200, 1000, 800, 600, 400, 200. Distances: 0.2, 1.0, 3.4, 6.4, 3.1, 3.1, 3.1, 3.1, 3.1 NM. Category: A, B, C, D. S-ILS 27R: 864/18, 200 (200-1/2). S-LOC 27R: 1120/24, 456 (500-1/2), 1120/45, 456 (500-7/8).

Category	A	B	C	D
S-ILS 27R	864/18 200 (200-1/2)			
S-LOC 27R	1120/24	456 (500-1/2)	1120/45	456 (500-7/8)

EC-3, 06 DEC 2018 to 03 JAN 2019

EC-3, 06 DEC 2018 to 03 JAN 2019