

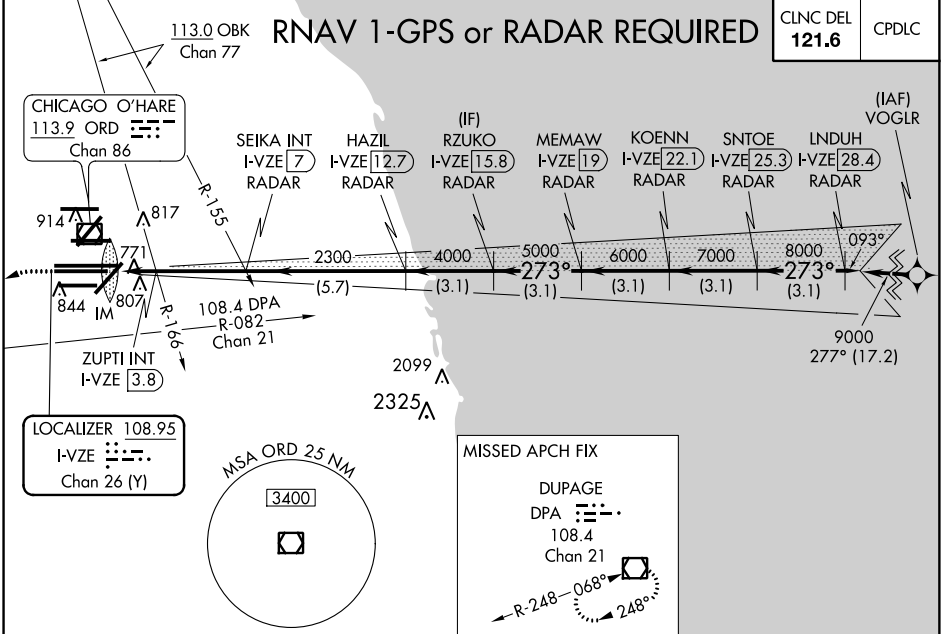
LOC/DME I-VZE 108.95 Chan 26 (Y)	APP CRS 273°	Rwy ldg 10800 TDZE 651 Apt Elev 680
---	------------------------	--

ILS or LOC RWY 28C

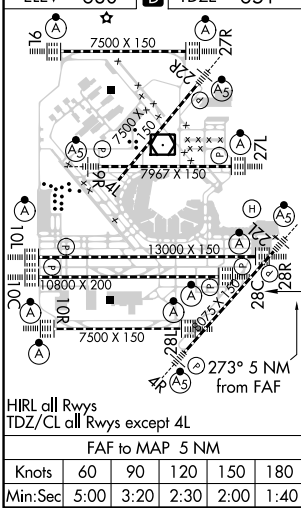
CHICAGO O'HARE INTL (ORD)

<p>Simultaneous approach authorized. DME or RADAR required.</p>	<p>ALS-2</p>	<p>MISSED APPROACH: Climb to 1100 then climbing left turn to 4000 on heading 215° and DPA VOR/DME R-082 to DPA VOR/DME and hold.</p>

D-ATIS 135.4 282.225	CHICAGO APP CON 119.0 393.1	O'HARE TOWERS 120.75 121.15 126.9 132.7 348.0 (CENTER)	GND CON (TWR NORTH) 124.125 (TWR SOUTH) 118.05 (ALL TWRS) 226.675	(TWR CENTER) 121.75 (OBND) (TWR NORTH) 121.9 (IBND) 134.15
--	---------------------------------------	--	--	---



ELEV 680	D	TDZE 651
----------	---	----------



1100	4000	DPA R-082	DPA	RZUKO I-VZE [15.8] RADAR	KOENN I-VZE [22.1] RADAR	INDUH I-VZE [28.4] RADAR
*LOC only.						
SEIKA INT I-VZE [7] RADAR	HAZIL I-VZE [12.7] RADAR	MEMAW I-VZE [19] RADAR	SNTOE I-VZE [25.3] RADAR	9000		
ZUPTI INT I-VZE [3.8]	2300	5000	6000	7000	8000	GS 3.00° TCH 55
I-VZE [2]	*I-VZE [2.9]	*1200	2300	VGSi and ILS glidepath not coincident (VGSi Angle 3.00/TCH 80).		
0.1	0.9	0.8	-3.2 NM	5.7 NM	3.1 NM	3.1 NM
CATEGORY A B C D						
S-ILS 28C		851/18 200 (200-½)				
S-LOC 28C		1200/24 549 (600-½)		1200/60 549 (600-1¼)		
ZUPTI FIX MINIMUMS (DUAL VOR RECEIVERS OR DME REQUIRED)						
S-LOC 28C		1040/24 389 (400-½)		1040/35 389 (400-¾)		

EC-3, 06 DEC 2018 to 03 JAN 2019

EC-3, 06 DEC 2018 to 03 JAN 2019