

LOC/DME I-VQX <b>110.75</b> Chan <b>44(Y)</b>	APP CRS <b>274°</b>	Rwy ldg TDZE Apt Elev	<b>7500</b> <b>667</b> <b>680</b>
---	------------------------	-----------------------------	---

# ILS or LOC RWY 28L

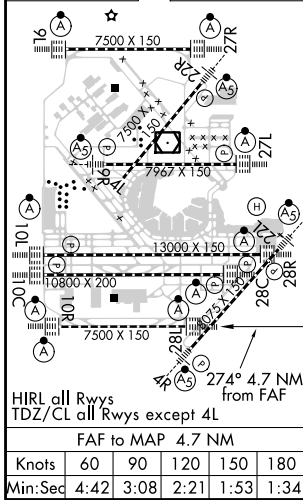
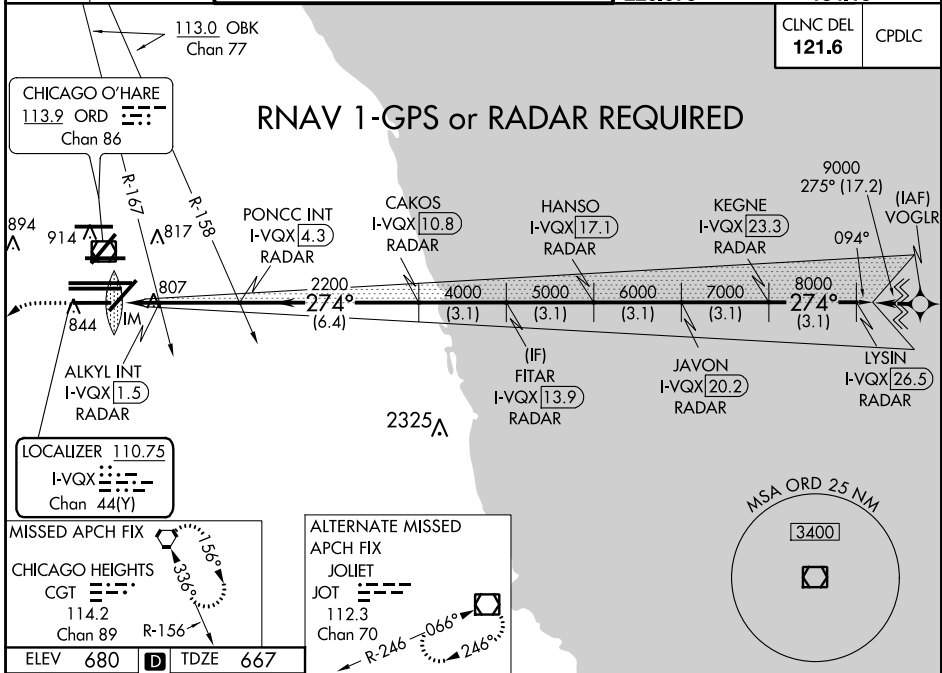
CHICAGO-O'HARE INTL (ORD)

Simultaneous approach authorized.  
For inop ASLF-2, increase S-LOC 28L Cat C and D visibility to 1½ mile.  
DME or RADAR required.

MISSED APPROACH: Climb to 1200 then climbing left turn to 4000 direct CGT VORTAC and hold.

D-ATIS <b>135.4</b> <b>282.225</b>	CHICAGO APP CON <b>119.0 393.1</b>	O'HARE TOWERS <b>128.15 348.0</b> (Rwy 9L/27R) <b>133.0 348.0</b> (10R/28L) <b>120.75 121.15 126.9 132.7 348.0</b> (CENTER)	GND CON (TWR NORTH) <b>124.125</b> (TWR SOUTH) <b>118.05</b> (ALL TWRs) <b>226.675</b>	(TWR CENTER) <b>121.75</b> (OBND) <b>121.9</b> (IBND) <b>134.15</b>
--	---------------------------------------	--	--	---

CLNC DEL <b>121.6</b>	CPDLC
--------------------------	-------



1200	4000	CGT	*LOC only.						
I-VQX DME ANTENNA		ALNYL INT I-VQX [1.5] RADAR	PONCC INT I-VQX [4.3] RADAR	CAKOS I-VQX [10.8] RADAR	FITAR I-VQX [13.9] RADAR	JAVON I-VQX [20.2] RADAR	LYSIN I-VQX [26.5] RADAR	KEGNE I-VQX [23.3] RADAR	HANSO I-VQX [17.1] RADAR
2200	4000	5000	6000	7000	8000	9000	GS 3.00° TCH 55		
0.2	0.9	0.7	2.9 NM	6.4 NM	3.1 NM	3.1 NM	3.1 NM	3.1 NM	3.1 NM
CATEGORY	A		B		C		D		
S-LS 28L	867/18 200 (200-½)								
S-LOC 28L	1240/24 573 (600-½)			1240-1¼ 573 (600-1¼)					
ALNYL FIX MINIMUMS (DUAL VOR RECEIVERS OR DME REQUIRED)									
S-LOC 28L	1060/24 393 (400-½)				1060/35 393 (400-¾)				

EC-3, 06 DEC 2018 to 03 JAN 2019

EC-3, 06 DEC 2018 to 03 JAN 2019