

# ILS PRM RWY 10C (CLOSE PARALLEL)

CHICAGO O'HARE INTL (ORD)

LOC/DME I-SXH <b>108.95</b> Chan 26(Y)	APP CRS <b>093°</b>	Rwy Ldg <b>10540</b> TDZE <b>669</b> Apt Elev <b>680</b>
--	------------------------	--

DME or RADAR required. Simultaneous approach authorized. Procedure NA when glide slope not available. Dual VHF COMM required. See additional requirements on AAPP.

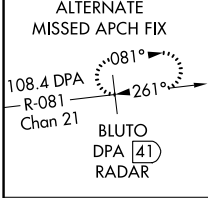
ALS-F-2

MISSED APPROACH: Climb to 4000 on heading 093° and CGT VORTAC R-336 to CGT VORTAC and hold.

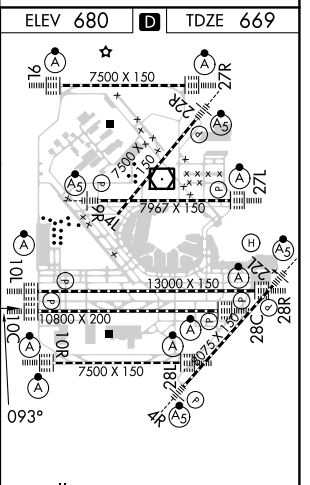
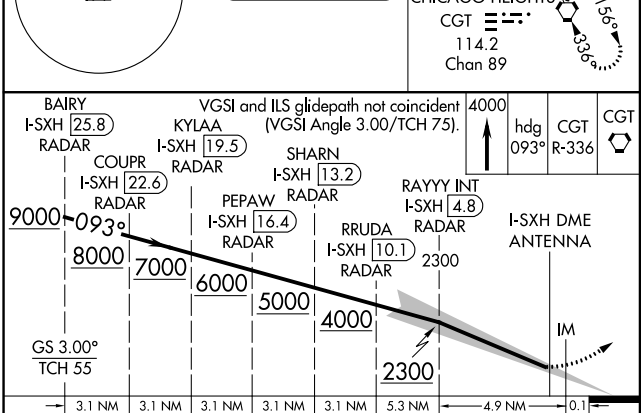
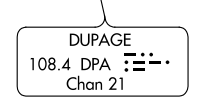
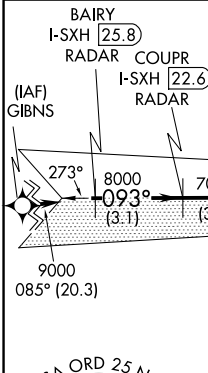
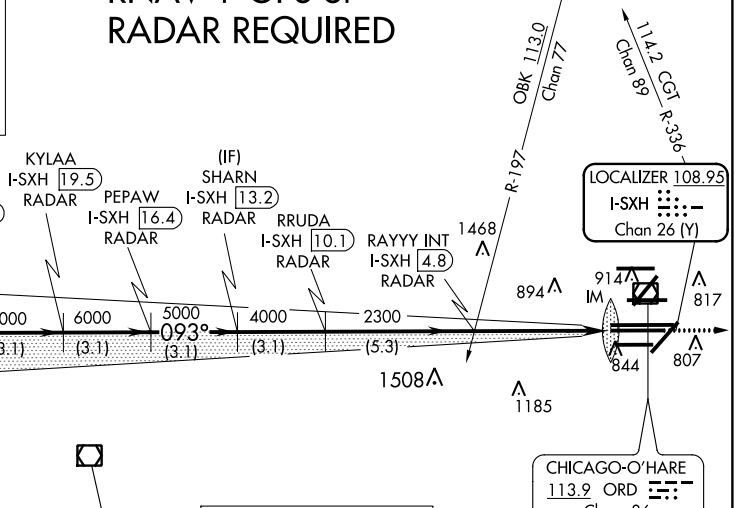
D-ATIS <b>135.4</b> <b>282.225</b>	CHICAGO APP CON <b>119.0 393.1</b>
--	---------------------------------------

O'HARE TOWERS			
<b>128.15</b>	<b>348.0</b> (Rwy 9L/27R)	<b>133.0</b>	<b>348.0</b> (10R/28L)
<b>120.75</b>	<b>121.15</b>	<b>126.9</b>	<b>132.7</b>
<b>PRM 119.625</b>			

GND CON (TWR NORTH) <b>124.125</b>	(TWR CENTER) <b>121.75</b> (OBND)
(TWR SOUTH) <b>118.05</b>	(IBND) <b>121.9</b>
(ALL TWRs) <b>226.675</b>	<b>134.15</b>



CLNC DEL		CPDLC
<b>121.6</b>		



CATEGORY	A	B	C	D
S-ILS 10C		869/18	200 (200-1/2)	

EC-3, 06 DEC 2018 to 03 JAN 2019

EC-3, 06 DEC 2018 to 03 JAN 2019