

ILS PRM RWY 10C (CAT II & III) (CLOSE PARALLEL)

CHICAGO O'HARE INTL (ORD)

LOC/DME I-SXH 108.95 Chan 26(Y)	APP CRS 093°	Rwy Ldg TDZE Apt Elev	10540 669 680
--	------------------------	-----------------------------	--

ALSF-2

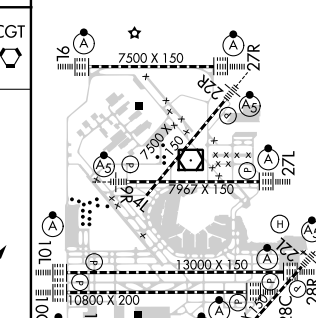
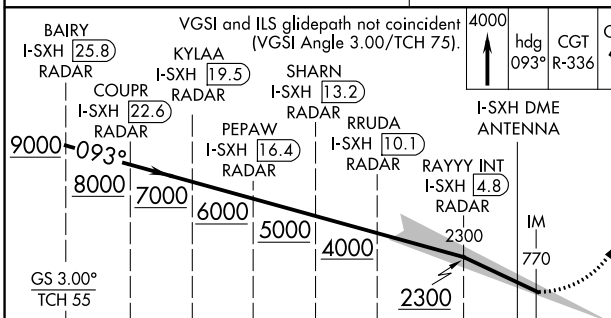
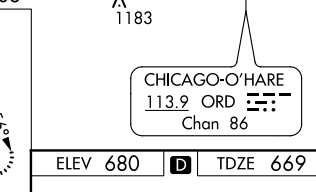
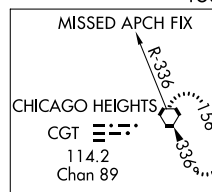
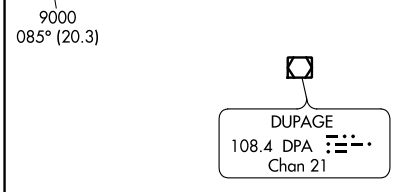
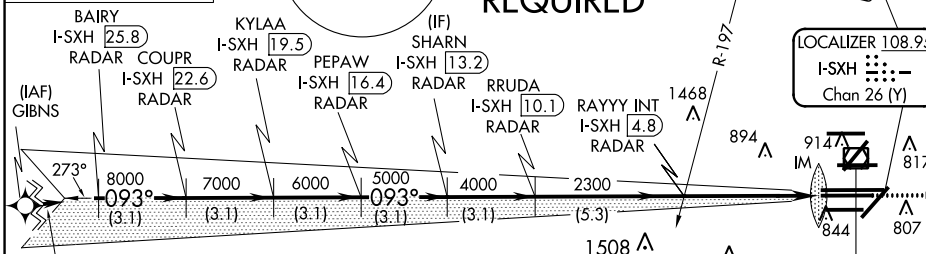
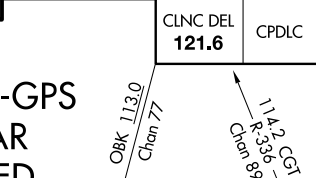
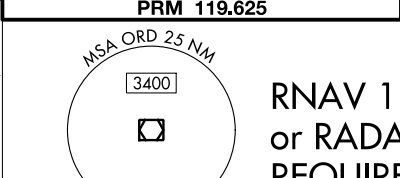
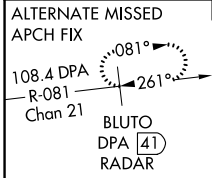
MISSED APPROACH: Climb to 4000 on heading 093° and CGT VORTAC R-336 to CGT VORTAC and hold.

DME or RADAR required. CAT II: RVR 1000 authorized with specific OPSPEC, MSPEC, or LOA approval and use of Autoland or HUD to touchdown. Simultaneous approach authorized. Procedure NA when glide slope not available. Dual VHF COMM required. See additional requirements on AAUP.

D-ATIS 135.4 282.225	CHICAGO APP CON 119.0 393.1
--	---------------------------------------

O'HARE TOWERS	
128.15 348.0 (Rwy 9L/27R)	133.0 348.0 (10R/28L)
120.75 121.15 126.9 132.7 348.0 (CENTER)	
PRM 119.625	

GND CON (TWR NORTH) 124.125	(TWR CENTER) 121.75 (IBND)
(TWR SOUTH) 118.05	(IBND) 121.9
(ALL TWRs) 226.675	134.15



CATEGORY	A	B	C	D
S-ILS 10C	CAT II RA 102/12 100 DA 769			
S-ILS 10C	CAT III RVR 06			

CATEGORY II and III ILS - SPECIAL AIRCREW & AIRCRAFT CERTIFICATION REQUIRED

HIRL all Rwys
TDZ/CL all Rwys except 4L

EC-3, 06 DEC 2018 to 03 JAN 2019

EC-3, 06 DEC 2018 to 03 JAN 2019