

ILS PRM RWY 28C (CLOSE PARALLEL) CHICAGO O'HARE INTL (ORD)

LOC/DME I-VZE 108.95 Chan 26 (Y)	APP CRS 273°	Rwy ldg 10800 TDZE 651 Apt Elev 680
---	------------------------	--

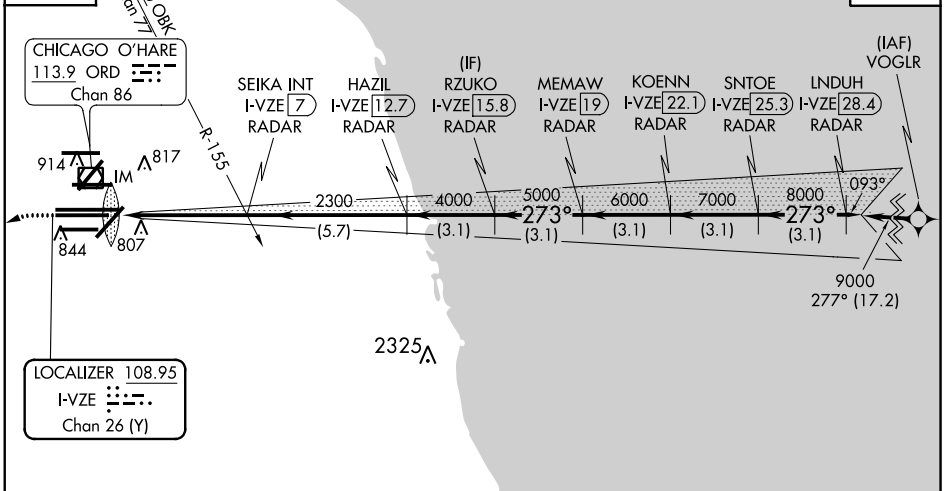
▼ DME or RADAR required. Simultaneous approach authorized. Procedure NA when glide slope not available. Dual VHF COMM required. See additional requirements on AAUP.

ALSIF-2 MISSED APPROACH: Climb to 1100 then climbing left turn to 4000 on heading 215° and DPA VOR/DME R-082 to DPA VOR/DME and hold.

CHICAGO APP CON 119.0 393.1	O'HARE TOWERS 128.15 348.0 (Rwy 9L/27R) 133.0 348.0 (10R/28L) 120.75 121.15 126.9 132.7 348.0 (CENTER) PRM 119.625	GND CON (TWR CENTER) 121.75 (OBND) (TWR NORTH) 121.9 (IBND) (TWR SOUTH) 134.15 (ALL TWRs) 226.675	CLNC DEL 121.6
---------------------------------------	---	---	--------------------------

D-ATIS **135.4 282.225** CPDLC

RNAV 1-GPS or RADAR REQUIRED



CHICAGO O'HARE
113.9 ORD
Chan 86

914 IM Δ 817
844 Δ 807

LOCALIZER 108.95
I-VZE
Chan 26 (Y)

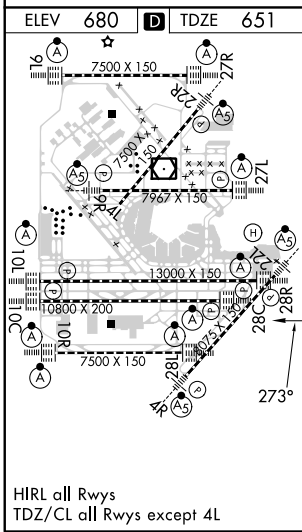
MISSED APCH FIX

DUPAGE
DPA
108.4
Chan 21

R-248-068° Δ 248°

MSA ORD 25 NM

3400



1100	4000	DPA R-082	DPA	RZUKO I-VZE 15.8 RADAR	KOENN I-VZE 22.1 RADAR	LNDUH I-VZE 28.4 RADAR
hdg 215°				SEIKA INT I-VZE 7 RADAR	MEMAW I-VZE 19 RADAR	SNTOE I-VZE 25.3 RADAR
				HAZIL I-VZE 12.7 RADAR	273° 9000	
				2300	6000	7000
				4000	5000	8000
				2300	GS 3.00° TCH 55	
				VGSI and ILS glidepath not coincident (VGSI Angle 3.00/TCH 80).		
				0.1	4.9 NM	5.7 NM
				3.1 NM	3.1 NM	3.1 NM
CATEGORY	A		B		C	
S-ILS 28C	851/18		200 (200-1/2)			

EC-3, 06 DEC 2018 to 03 JAN 2019

EC-3, 06 DEC 2018 to 03 JAN 2019