

LOC/DME I-VZE <b>108.95</b> Chan 26 (Y)	APP CRS <b>273°</b>	Rwy ldg <b>10800</b>	TDZE <b>651</b>
Apt Elev <b>680</b>			

# ILS PRM RWY 28C (CAT II & III) (CLOSE PARALLEL) CHICAGO O'HARE INTL (ORD)

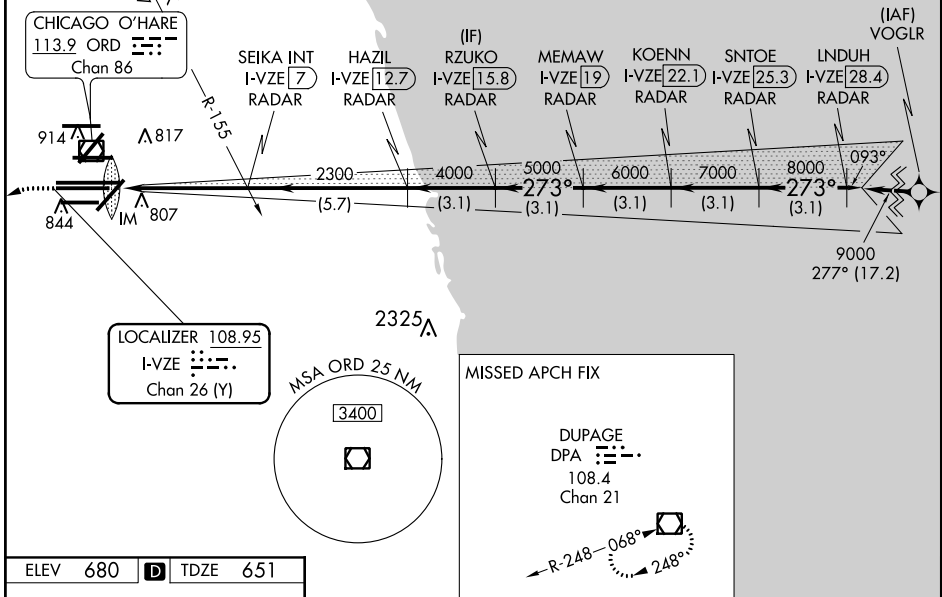
▼ DME or RADAR required. CAT II: RVR 1000 authorized with specific OPSPEC, MSPEC, or LOA approval and use of autoland or HUD to touchdown. Simultaneous approach authorized. Procedure NA when glide slope not available. Dual VHF COMM required. See additional requirements on AAUP.

ALSF-2  
MISSED APPROACH: Climb to 1100 then climbing left turn to 4000 on heading 215° and DPA VOR/DME R-082 to DPA VOR/DME and hold.

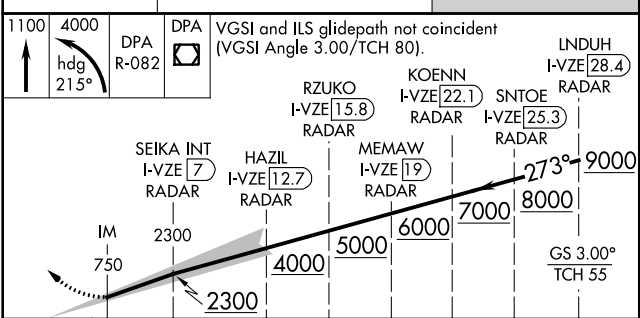
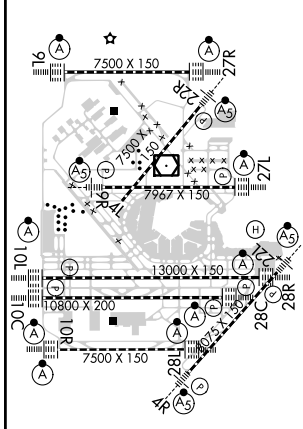
D-ATIS <b>135.4</b>	CHICAGO APP CON <b>119.0 393.1</b>	O'HARE TOWERS <b>128.15 348.0</b> (Rwy 9L/27R) <b>133.0 348.0</b> (10R/28L) <b>120.75 121.15 126.9 132.7 348.0</b> (CENTER) <b>PRM 119.625</b>	GND CON (TWR CENTER) <b>124.125</b> (TWR NORTH) <b>121.75</b> (OBND) <b>118.05</b> (TWR SOUTH) <b>121.9</b> (IBND) <b>226.675</b> (ALL TWRS) <b>134.15</b>
------------------------	---------------------------------------	--	--

## RNAV 1-GPS or RADAR REQUIRED

CLNC DEL <b>121.6</b>	CPDLC
--------------------------	-------



ELEV <b>680</b>	<b>D</b>	TDZE <b>651</b>
-----------------	----------	-----------------



CATEGORY	A	B	C	D
S-ILS 28C	CAT II RA 105/12 100 DA 751			
S-ILS 28C	CAT III RVR 06			

### CATEGORY II & III ILS - SPECIAL AIRCREW & AIRCRAFT CERTIFICATION REQUIRED

EC-3: 06 DEC 2018 to 03 JAN 2019

EC-3: 06 DEC 2018 to 03 JAN 2019