

ILS PRM RWY 28C (SA CAT I)

(CLOSE PARALLEL)

CHICAGO O'HARE INTL (ORD)

LOC/DME I-VZE 108.95 Chan 26 (Y)	APP CRS 273°	Rwy ldg 10800 TDZE 651 Apt Elev 680
---	------------------------	--

▼ DME or RADAR required. Simultaneous approach authorized. Procedure NA when glide slope not available. Dual VHF COMM required. See additional requirements on AAUP. Requires specific OPSPEC, MSPEC, or LOA approval and use of HUD to DH.

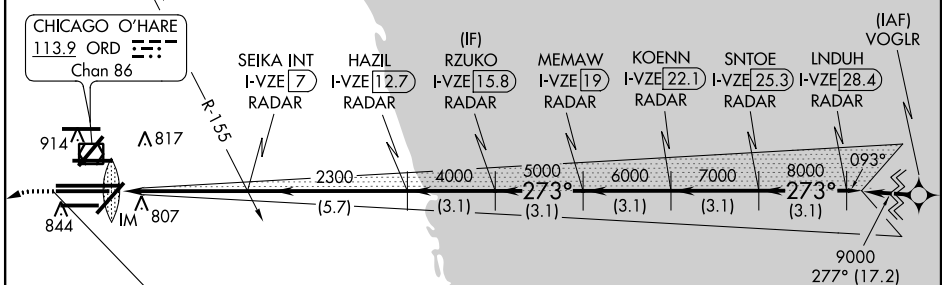


MISSED APPROACH: Climb to 1100 then climbing left turn to 4000 on heading 215° and DPA VOR/DME R-082 to DPA VOR/DME and hold.

D-ATIS 135.4 282.225	CHICAGO APP CON 119.0 393.1	O'HARE TOWERS 128.15 348.0 (Rwy 9L/27R) 133.0 348.0 (10R/28L) 120.75 121.15 126.9 132.7 348.0 (CENTER) PRM 119.625	GND CON (TWR NORTH) 121.75 (TWR CENTER) 121.75 (TWR SOUTH) 121.9 (TWR I/BND) 134.15 226.675 (ALL TWRs)
--	---------------------------------------	---	--

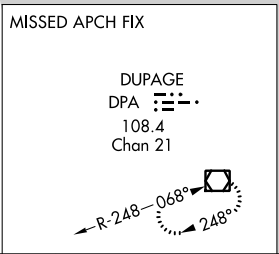
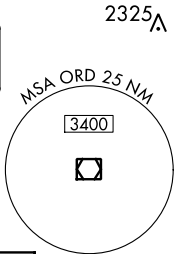
CLNC DEL 121.6	CPDLC
--------------------------	-------

RNAV 1-GPS or RADAR REQUIRED

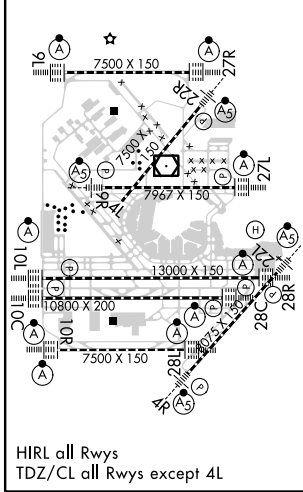


CHICAGO O'HARE
113.9 ORD
Chan 86

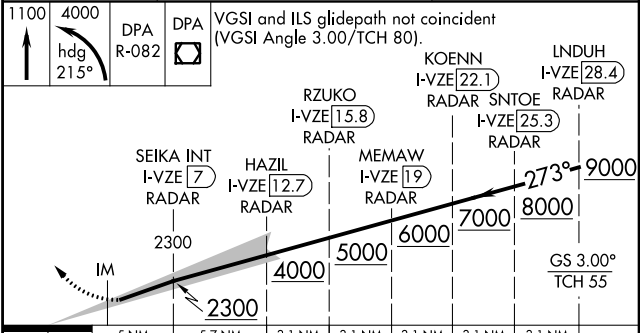
LOCALIZER 108.95
I-VZE
Chan 26 (Y)



ELEV 680	D	TDZE 651
----------	---	----------



HIRL all Rwy's
TDZ/CL all Rwy's except 4L



1043	5 NM	5.7 NM	3.1 NM	3.1 NM	3.1 NM	3.1 NM
CATEGORY	A	B	C	D		
S-ILS 28C	RA 155/14 150 DA 801					

SA CATEGORY I ILS - SPECIAL AIRCREW & AIRCRAFT CERTIFICATION REQUIRED

ILS PRM RWY 28C (SA CAT I) (CLOSE PARALLEL)

EC-3, 06 DEC 2018 to 03 JAN 2019

EC-3, 06 DEC 2018 to 03 JAN 2019