

LOC/DME I-BYW <b>110.9</b> Chan 46	APP CRS <b>091°</b>	Rwy Idg TDZE Apt Elev	<b>7500</b> <b>680</b> <b>680</b>
--	------------------------	-----------------------------	---

# ILS PRM Y RWY 10R (CLOSE PARALLEL)

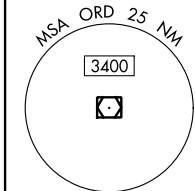
CHICAGO-O'HARE INTL (ORD)

Simultaneous approach authorized. Procedure NA when glide slope not available. Dual VHF COMM required. See additional requirements on AAUP. DME or RADAR required. Inop table does not apply to S-ILS 10R all Cts. Rwy 10R helicopter visibility reduction below 3/4 SM NA.

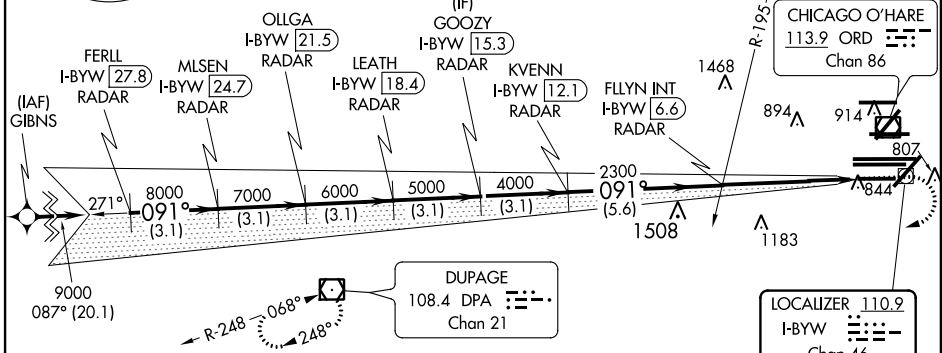


MISSED APPROACH: Climb to 1200 then climbing right turn to 4000 direct DPA VOR/DME and hold.

D-ATIS <b>135.4</b>	CHICAGO APP CON <b>119.0 393.1</b>	O'HARE TOWERS <b>128.15 348.0</b> (Rwy 9L/27R) <b>133.0 348.0</b> (10R/28L) <b>120.75 121.15 126.9 132.7 348.0</b> (CENTER) <b>PRM 128.05</b>	GND CON (TWR CENTER) <b>124.125</b> (TWR NORTH) <b>121.75</b> (OBND) (TWR SOUTH) <b>121.9</b> (IBND) <b>226.675</b> (ALL TWRs) <b>134.15</b>
------------------------	---------------------------------------	--	---



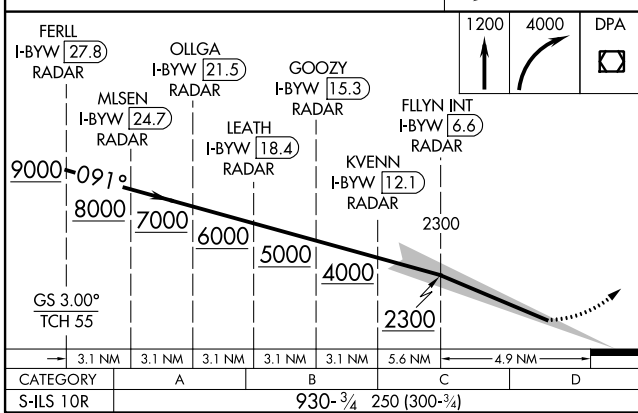
CLNC DEL <b>121.6</b>	CPDLC
--------------------------	-------



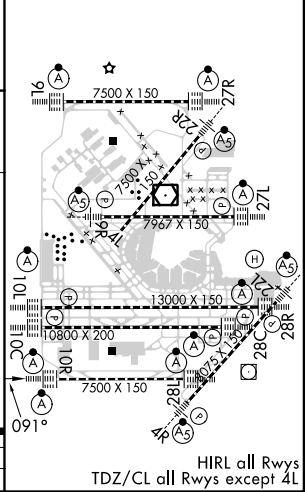
**RNAV 1-GPS or RADAR REQUIRED**

ALTERNATE MISSED APCH FIX

JOLIET	112.3	Chan 70
--------	-------	---------



ELEV 680	D	TDZE 680
----------	---	----------



EC-3, 06 DEC 2018 to 03 JAN 2019

EC-3, 06 DEC 2018 to 03 JAN 2019