

LOC/DME I-BYW 110.9 Chan 46	APP CRS 091°	Rwy Ldg 7500 TDZE 680 Apt Elev 680
--	------------------------	---

ILS Y or LOC Y RWY 10R

CHICAGO-O'HARE INTL (ORD)

Simultaneous approach authorized. DME or RADAR required.
Inop table does not apply to S-ILS 10R all Cats. For inop ALS, increase S-LOC 10R Cat A and B visibility to 1 SM.
Rwy 10R helicopter visibility reduction below 3/4 SM NA.

ALSF-2
MISSED APPROACH: Climb to 1200 then climbing right turn to 4000 direct DPA VOR/DME and hold.

CHICAGO APP CON 119.0 393.1	O'HARE TOWERS 128.15 348.0 (Rwy 9L/27R) 133.0 348.0 (10R/28L) 120.75 121.15 126.9 132.7 348.0 (CENTER)	GND CON (TWR CENTER) 124.125 (TWR NORTH) 121.75 (OBND) 118.05 (TWR SOUTH) 121.9 (IBND) 226.675 (ALL TWSRS) 134.15	CLNC DEL 121.6
---------------------------------------	--	--	--------------------------

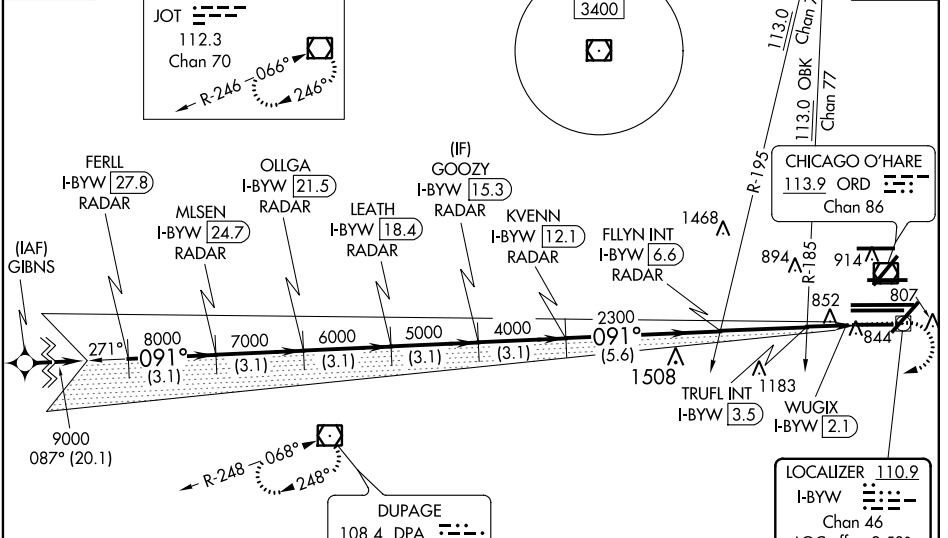
D-ATIS **135.4**
282.225

ALTERNATE MISSED APCH FIX
JOLIET
JOT
112.3
Chan 70

MSA ORD 25 NM
3400

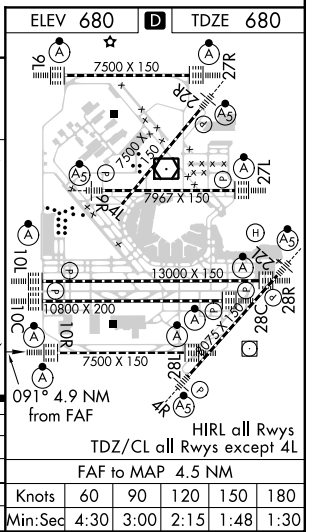
113.0 OBK Chan 77
113.0 OBK Chan 77

CPDLC



RNAV 1-GPS or RADAR REQUIRED

FERLL I-BYW [27.8] RADAR	OLLGA I-BYW [21.5] RADAR	GOOZY I-BYW [15.3] RADAR	FLYIN INT I-BYW [6.6] RADAR	TRUFL INT I-BYW [3.5] RADAR	WUGIX I-BYW [2.1] RADAR
MLESEN I-BYW [24.7] RADAR	LEATH I-BYW [18.4] RADAR	KVENN I-BYW [12.1] RADAR			
9000	8000	7000	6000	5000	4000
GS 3.00° TCH 55					2300
					*1220
3.1 NM	3.1 NM	3.1 NM	3.1 NM	3.1 NM	5.6 NM
					3.1 NM
					0.6 NM
					0.8 NM
					0.4 NM
CATEGORY	A	B	C	D	
S-ILS 10R	930-3/4		250 (300-3/4)		
S-LOC 10R	1220-3/4	540 (600-3/4)	1220-1	540 (600-1)	
TRUFL FIX MINIMUMS (DUAL VOR RECEIVERS OR DME REQUIRED)					
S-LOC 10R	1120-3/4		440 (500-3/4)		



EC-3: 06 DEC 2018 to 03 JAN 2019

EC-3: 06 DEC 2018 to 03 JAN 2019