

LOC/DME I-HZJ <b>110.75</b> Chan 44 (Y)	APP CRS <b>094°</b>	Rwy Idg TDZE Apt Elev	<b>7500</b> <b>680</b> <b>680</b>
---	------------------------	-----------------------------	---

# ILS Z RWY 10R (CAT II & III)

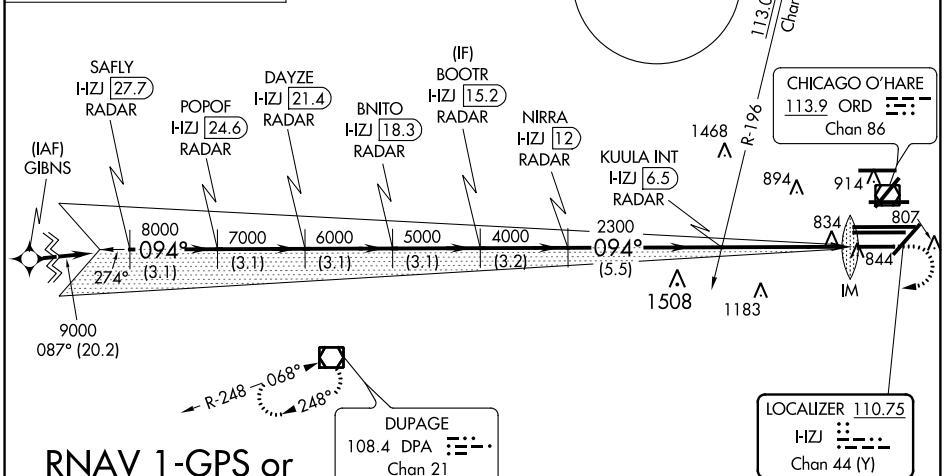
CHICAGO-O'HARE INTL (ORD)

Simultaneous approach authorized. DME or RADAR required.  
 CAT II: RVR 1000 authorized with specific OPSPEC, MSPEC, or LOA approval and use of autoland or HUD to touchdown.

ALSF-2

MISSED APPROACH: Climb to 1200 then climbing right turn to 4000 direct DPA VOR/DME and hold.

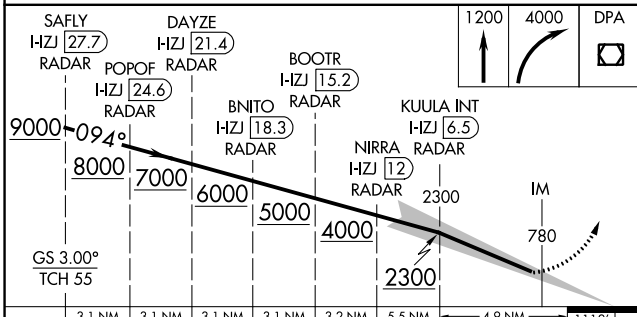
D-ATIS <b>135.4</b> <b>282.225</b>	CHICAGO APP CON <b>119.0</b> <b>393.1</b>	O'HARE TOWERS <b>128.15</b> <b>348.0</b> (Rwy 9L/27R) <b>133.0</b> <b>348.0</b> (10R/28L) <b>121.75</b> (OBND) <b>121.9</b> (IBND) <b>134.15</b> (CENTER)	GND CON (TWR NORTH) <b>124.125</b> (TWR SOUTH) <b>118.05</b> (ALL TWRs) <b>226.675</b>
--	--	--	---



**RNAV 1-GPS or RADAR REQUIRED**

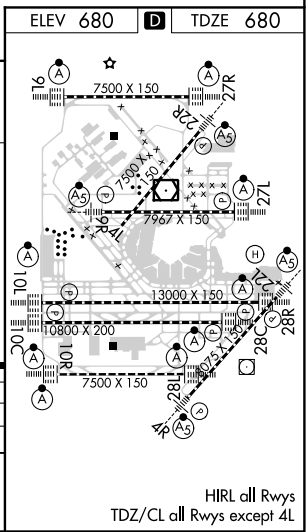
DUPAGE 108.4 DPA Chan 21

LOCALIZER 110.75 HZJ Chan 44 (Y)



CATEGORY	A	B	C	D
S-ILS 10R	CAT II RA 110/12		100 DA 780	
S-ILS 10R	CAT III RVR 06			

**CATEGORY II & III ILS - SPECIAL AIRCREW & AIRCRAFT CERTIFICATION REQUIRED**



HIRL all Rwys  
 TDZ/CL all Rwys except 4L

EC-3: 06 DEC 2018 to 03 JAN 2019

EC-3: 06 DEC 2018 to 03 JAN 2019