

LOC/DME I-ZJ 110.75 Chan 44 (Y)	APP CRS 094°	Rwy Idg 7500	TDZE 680	Apt Elev 680
--	------------------------	-----------------	-------------	-----------------

ILS Z or LOC Z RWY 10R

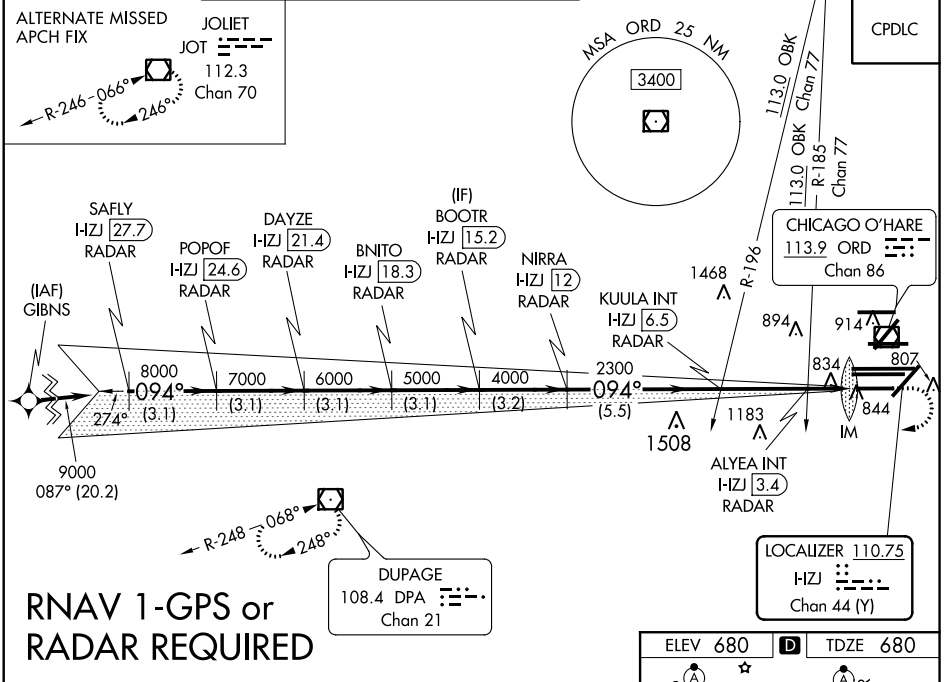
CHICAGO-O'HARE INTL (ORD)

Simultaneous approach authorized. DME or RADAR required.
For inop ALS, increase S-LOC 10R Cat C and D visibility to RVR 6000.

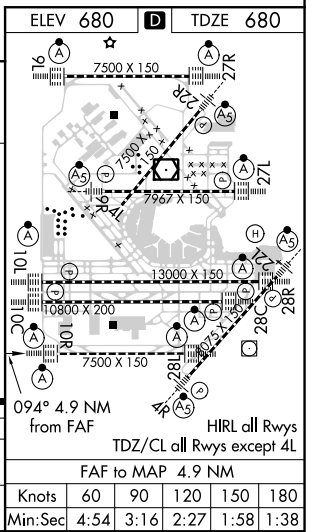
ALSF-2

MISSED APPROACH: Climb to 1200 then climbing right turn to 4000 direct DPA VOR/DME and hold.

D-ATIS 135.4	CHICAGO APP CON 119.0 393.1	O'HARE TOWERS 128.15 348.0 (Rwy 9L/27R) 133.0 348.0 (10R/28L)	GND CON (TWR NORTH) 124.125	(TWR CENTER) 121.75 (OBND)	CLNC DEL 121.6
282.225	120.75	121.15 126.9 132.7 348.0 (CENTER)	118.05 (TWR SOUTH)	121.9 (IBND)	
			226.675 (ALL TWRs)	134.15	



	SAFLY I-ZJ 27.7 RADAR	POPOF I-ZJ 24.6 RADAR	DAYZE I-ZJ 21.4 RADAR	BNITO I-ZJ 18.3 RADAR	BOOTR I-ZJ 15.2 RADAR	NIRRA I-ZJ 12 RADAR	KUULA INT I-ZJ 6.5 RADAR	ALYEA INT I-ZJ 3.4 RADAR	IM I-ZJ 1.6
9000	8000	7000	6000	5000	4000	2300	2300	1220	
GS 3.00° TCH 55									
	3.1 NM	3.1 NM	3.1 NM	3.1 NM	3.2 NM	5.5 NM	3.1 NM	0.7 NM	0.1 NM
CATEGORY	A			B		C		D	
S-ILS 10R	880/18			200 (200-½)					
S-LOC 10R	1100/24			420 (500-½)					



EC-3, 06 DEC 2018 to 03 JAN 2019

EC-3, 06 DEC 2018 to 03 JAN 2019