

WAAS CH 90504 W22A	APP CRS 223°	Rwy Idg 7500 TDZE 652 Apt Elev 672
--	------------------------	---

RNAV (GPS) RWY 22R

CHICAGO-O'HARE INTL (ORD)

▼ For uncompensated Baro-VNAV systems, LNAV/VNAV NA below -22°C (-7°F) or above 39°C (102°F). Simultaneous approach authorized with Rwy 22L. DME/DME RNP-0.3 NA. LNAV procedure NA during simultaneous operations. Use of FD or AP providing RNAV track guidance required during simultaneous operations.

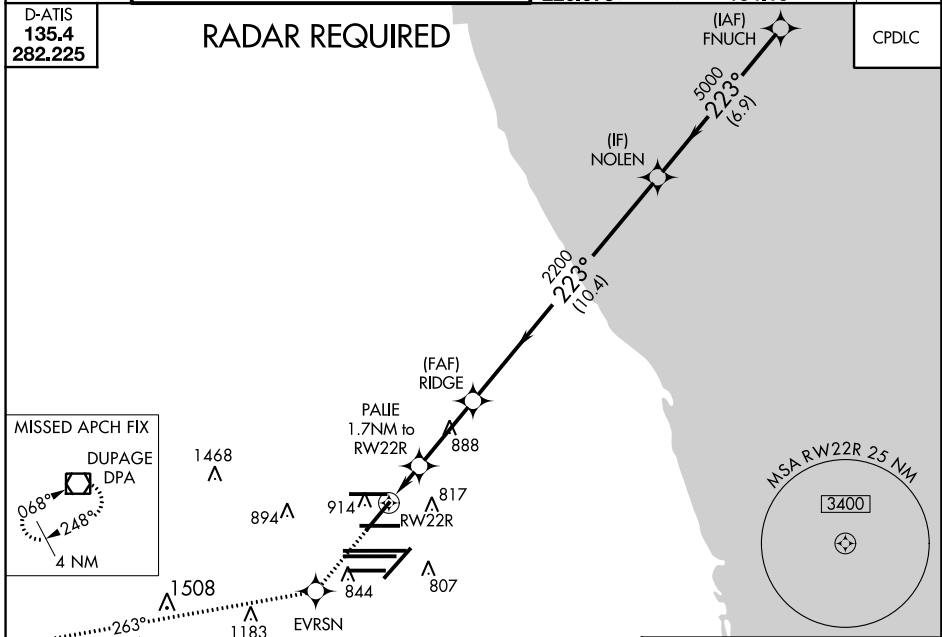


MISSED APPROACH: Climb to 4000 direct EVRSN and on track 263° to DPA VOR/DME and hold.

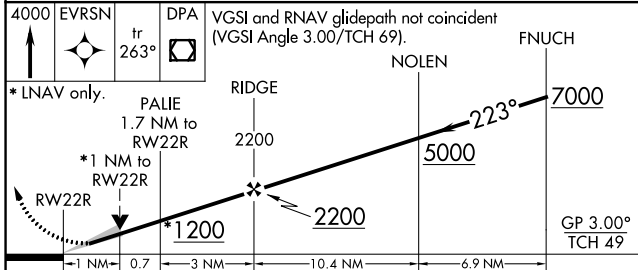
CHICAGO APP CON 119.0 393.1	O'HARE TOWERS 128.15 348.0 (Rwy 9L/27R) 133.0 348.0 (10R/28L) 120.75 121.15 126.9 132.7 348.0 (CENTER)	GND CON (TWR CENTER) 124.125 (TWR NORTH) 121.75 (OBND) 118.05 (TWR SOUTH) 121.9 (IBND) 226.675 (ALL TWRs) 134.15	CLNC DEL 121.6
---------------------------------------	--	---	--------------------------

D-ATIS 135.4 282.225
--

RADAR REQUIRED



4000 EVRSN	tr 263°	DPA	VGSI and RNAV glidepath not coincident (VGSI Angle 3.00/TCH 69).
------------	---------	-----	--



CATEGORY	A	B	C	D
LPV DA		852/18	200 (200-½)	
LNAV/VNAV DA		972/32	320 (300-¾)	
LNAV MDA	1040/24	388 (400-½)	1040/35	388 (400-¾)
CIRCLING	1220-1	548 (600-1)	1220-1½	1240-2 568 (600-2)

