

RNAV (GPS) PRM Y RWY 10R

(CLOSE PARALLEL)

CHICAGO-O'HARE INTL (ORD)

WAAS CH 77937 W10D	APP CRS 090°	Rwy Idg 7500 TDZE 680 Apt Elev 680
--	------------------------	---

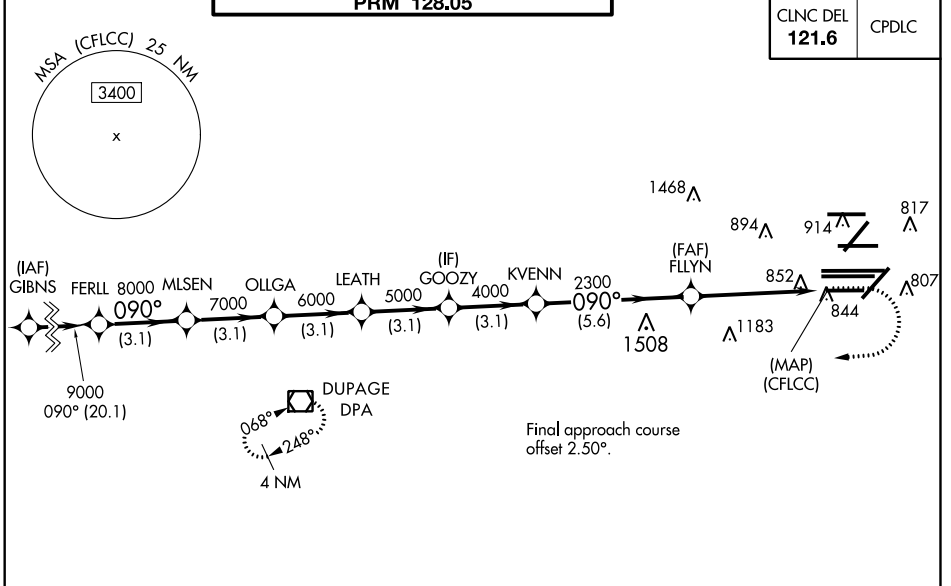
▼ DME/DME RNP-0.3 NA. Simultaneous approach authorized. Dual VHF comm required. See additional requirements on AAUP. For uncompensated Baro-VNAV systems, LNAV/VNAV NA below -19°C (-2°F) or above 54°C (130°F). Use of FD or AP providing RNAV track guidance required during simultaneous operations. Inop table does not apply to LPV all Cats. Rwy 10R helicopter visibility reduction below ¾ SM NA.

ALSF-2

MISSED APPROACH: Climb to 1200 then climbing right turn to 4000 direct DPA VOR/DME and hold.

D-ATIS 135.4	CHICAGO APP CON 119.0 393.1	O'HARE TOWERS 128.15 348.0 (Rwy 9L/27R) 133.0 348.0 (10R/28L) 120.75 121.15 126.9 132.7 348.0 (CENTER) PRM 128.05	GND CON (TWR CENTER) 124.125 (TWR NORTH) 121.75 (OBND) 118.05 (TWR SOUTH) 121.9 (IBND) 226.675 (ALL TWRs) 134.15
------------------------	---------------------------------------	---	---

CLNC DEL 121.6	CPDLC
--------------------------	-------

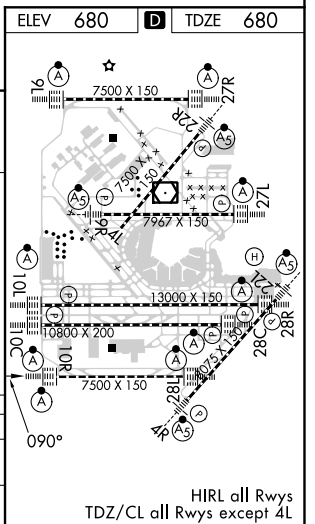


EC-3, 06 DEC 2018 to 03 JAN 2019

EC-3, 06 DEC 2018 to 03 JAN 2019

RADAR REQUIRED

	FERLL	MLSN	OLLGA	LEATH	GOOZY	KVENN	FLLYN	(CFLLC)
	9000	8000	7000	6000	5000	4000	2300	
	3.1 NM	3.1 NM	3.1 NM	3.1 NM	3.1 NM	5.6 NM	4.9 NM	
GP 3.00 TCH 55								
CATEGORY	A			B			C	D
LPV	DA			930-¾			250 (300-¾)	
LNAV/ VNAV	DA			1157-1½			477 (500-1½)	



RNAV (GPS) PRM Y RWY 10R (CLOSE PARALLEL)

HIRL all Rwys
TDZ/CL all Rwys except 4L