

CHICAGO, ILLINOIS

AL-166 (FAA) **RNAV (GPS) PRM Y RWY 28L**

(CLOSE PARALLEL)

CHICAGO O'HARE INTL (ORD)

WAAS CH 93839 W28E	APP CRS 275°	Rwy Idg TDZE Apt Elev	7500 667 680
--	------------------------	-----------------------------	---

RNP APCH. RADAR required.

▼ For uncompensated Baro-VNAV systems, LNAV/VNAV NA below -19°C or above 54°C. Simultaneous approach authorized. Use of FD or AP required during simultaneous operations. Dual VHF comm required. See additional requirements on AAUP.

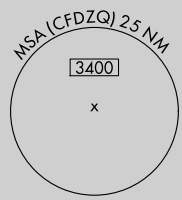
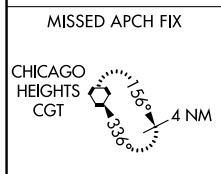
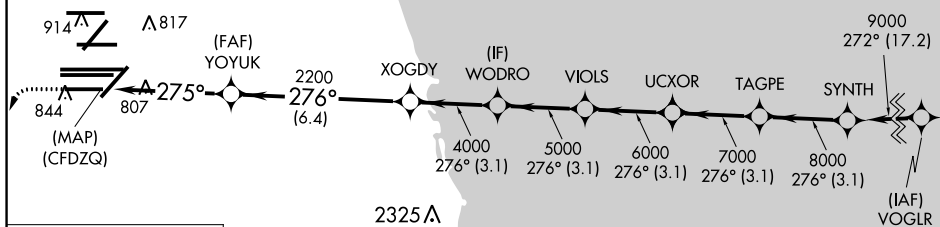
ALSf-2

MISSED APPROACH: Climb to 1200 then climbing left turn to 4000 direct CGT VORTAC and hold.

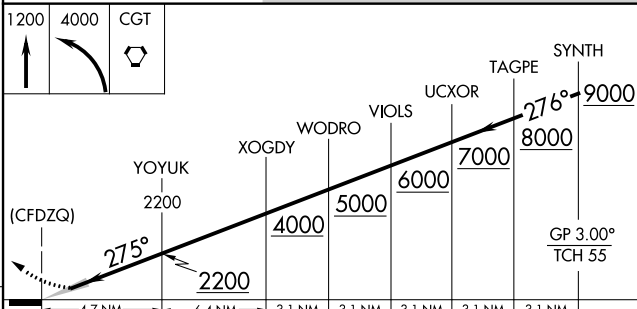
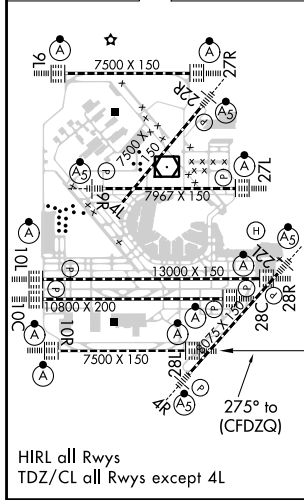
D-ATIS 135.4 282.225	CHICAGO APP CON 119.0 393.1	O'HARE TOWERS 128.15 348.0 (Rwy 9L/27R) 133.0 348.0 (10R/28L) 120.75 121.15 126.9 132.7 348.0 (CENTER) PRM 128.05	GND CON (TWR CENTER) 121.75 (OBND) (TWR NORTH) 121.95 (IBND) (TWR SOUTH) 122.675 (ALL TWRs) 134.15
--	---------------------------------------	---	--

CLNC DEL 121.6	CPDLC
--------------------------	-------

Final approach course offset 2.50°.



ELEV 680	D	TDZE 667
----------	---	----------



CATEGORY	A	B	C	D
LPV DA		917/24	250 (300-½)	
LNAV/VNAV DA		1090/40	423 (500-¾)	

CHICAGO, ILLINOIS
Orig-A 13SEP18

41°58'N-87°54'W

CHICAGO O'HARE INTL (ORD)

RNAV (GPS) PRM Y RWY 28L (CLOSE PARALLEL)

EC-3, 06 DEC 2018 to 03 JAN 2019

EC-3, 06 DEC 2018 to 03 JAN 2019