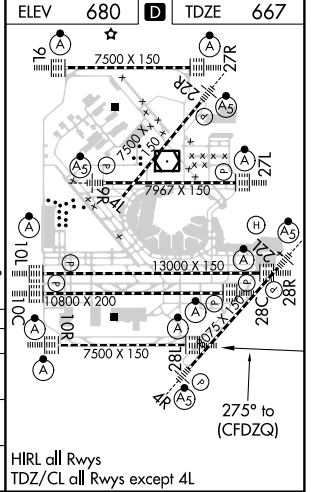
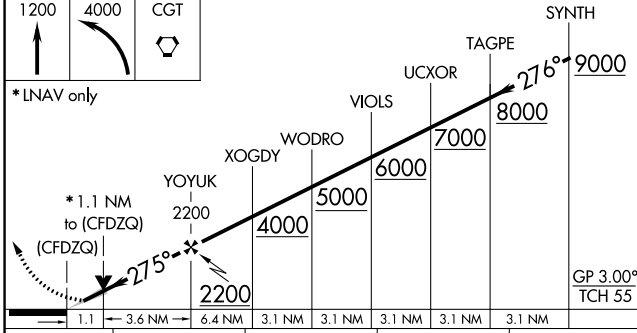
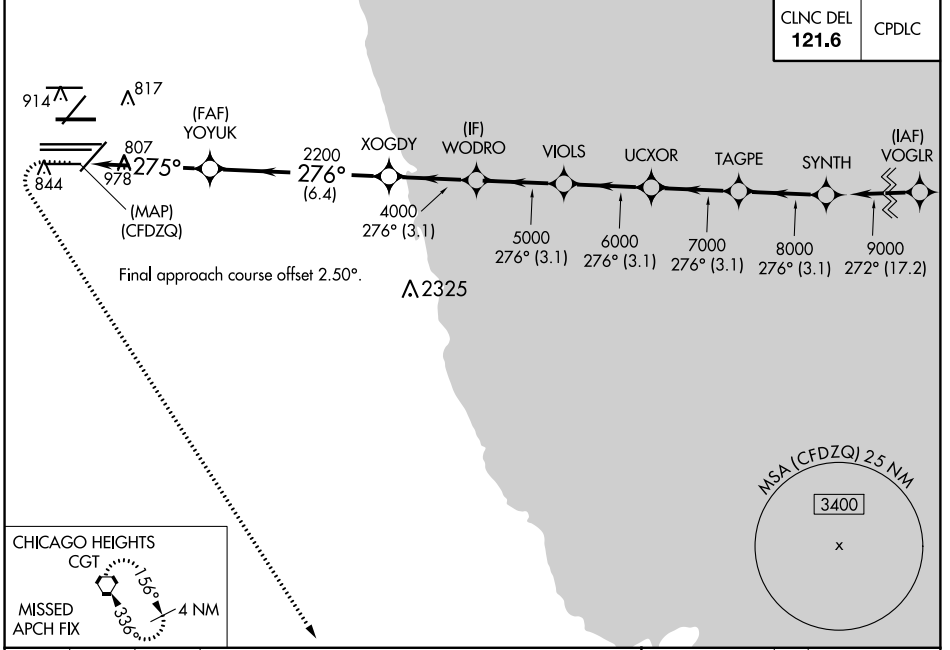


WAAS CH 93839 W28E	APP CRS 275°	Rwy ldg TDZE Apt Elev	7500 667 680
--	------------------------	-----------------------------	---

RNAV (GPS) Y RWY 28L

CHICAGO-O'HARE INTL (ORD)

RNP APCH. Simultaneous approach authorized. LNAV procedure NA during simultaneous operations. For uncompensated Baro-VNAV systems, LNAV/VNAV NA below -19°C or above 54°C. Use of FD or AP required during simultaneous operations.		ALSF-2 	MISSED APPROACH: Climb to 1200 then climbing left turn to 4000 direct CGT VORTAC and hold.
D-ATIS 135.4 282.225	CHICAGO APP CON 119.0 393.1	O'HARE TOWERS 128.15 348.0 (Rwy 9L/27R) 133.0 348.0 (10R/28L) 120.75 121.15 126.9 132.7 348.0 (CENTER)	GND CON (TWR CENTER) 124.125 (TWR NORTH) 121.75 (IBND) 118.05 (TWR SOUTH) 121.9 (IBND) 226.675 (ALL TWRs) 134.15



CATEGORY	A	B	C	D
LPV DA	917/24		250 (300-½)	
LNAV/VNAV DA	1090/40		423 (500-¾)	
LNAV MDA	1060/24	393 (400-½)	1060/35	393 (400-⅝)

EC-3, 06 DEC 2018 to 03 JAN 2019

EC-3, 06 DEC 2018 to 03 JAN 2019