

WAAS CH <b>65837</b> <b>W28D</b>	APP CRS <b>273°</b>	Rwy Idg TDZE Apt Elev	<b>7500</b> <b>667</b> <b>680</b>
--	------------------------	-----------------------------	---

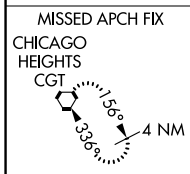
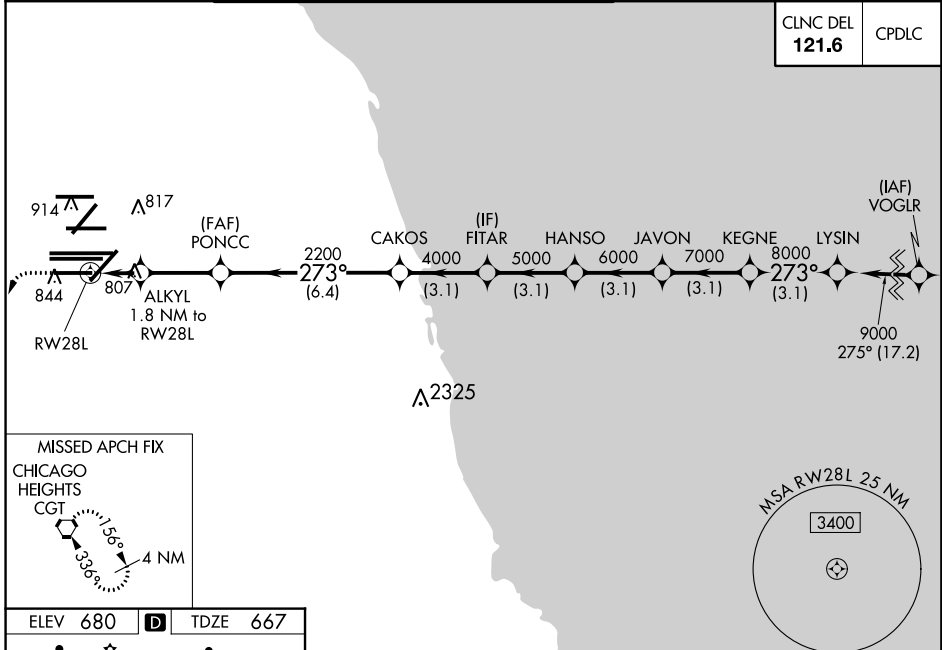
# RNAV (GPS) Z RWY 28L

CHICAGO-O'HARE INTL (ORD)

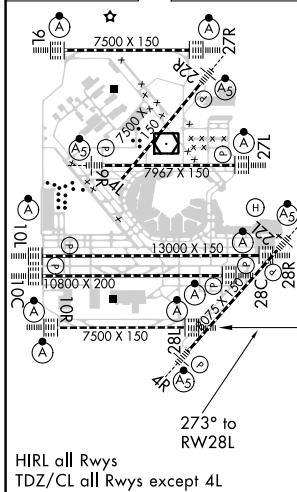
RNP APCH.	ALSF-2	MISSED APPROACH: Climb 1200 then climbing left turn to 4000 direct CGT VORTAC and hold.
Simultaneous approach authorized. LNAV procedure NA during simultaneous operations. For uncompensated Baro-VNAV systems, LNAV/VNAV NA below -19C or above 54C. Use of FD or AP required during simultaneous operations.		

D-ATIS <b>135.4</b>	CHICAGO APP CON <b>119.0 393.1</b>	O'HARE TOWERS <b>128.15 348.0</b> (Rwy 9L/27R) <b>133.0 348.0</b> (10R/28L) <b>124.125</b> (TWR NORTH) <b>118.05</b> (TWR SOUTH) <b>226.675</b> (ALL TWRs)	GND CON <b>121.75</b> (TWR CENTER) <b>121.9</b> (OBND) <b>134.15</b> (IBND)
------------------------	--	---	--

CLNC DEL <b>121.6</b>	CPDLC
--------------------------	-------



ELEV 680	TDZE 667
----------	----------



1200	4000	CGT
*LNAV only.		
ALKYL 1.8 NM to RWY 28L	CAKOS	LYSIN
*1.1 NM to RWY 28L	FITAR	8000
RWY 28L	HANSO	9000
*1280	JAVON	GP 3.00° TCH 55
2200	KEGNE	
1.1 NM 0.7 2.9 NM 6.4 NM 3.1 NM 3.1 NM 3.1 NM 3.1 NM		
CATEGORY	A	B
LPV	DA 867/18	200 (200-1/2)
LNAV/VNAV	DA 1090/40	423 (500-3/4)
LNAV MDA	1060/24 393 (400-1/2)	1060/35 393 (400-5/8)

EC-3, 06 DEC 2018 to 03 JAN 2019

EC-3, 06 DEC 2018 to 03 JAN 2019