

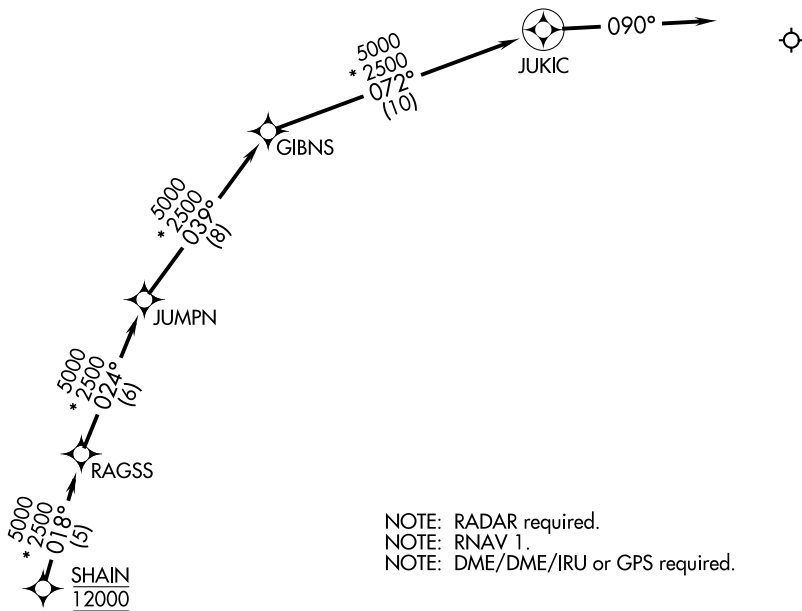
(SHAIN.SHAIN1) 17173

AL-166

CHICAGO O'HARE INTL (ORD)  
CHICAGO, ILLINOIS

# SHAIN ONE ARRIVAL (RNAV) Arrival Routes

CHICAGO APP CON  
119.0 393.1  
D-ATIS  
135.4 282.225



NOTE: RADAR required.  
NOTE: RNAV 1.  
NOTE: DME/DME/IRU or GPS required.

NOTE: Chart note to scale.

## ARRIVAL ROUTE DESCRIPTION

LANDING RWYS 9L/R, 10L/C/R: From SHAIN on track 018° to RAGSS, then on track 024° to JUMPN, then on track 039° to GIBNS, then on track 072° to JUKIC, then on track 090°. Expect RADAR vectors to final approach course.

# SHAIN ONE ARRIVAL (RNAV) Arrival Routes

(SHAIN.SHAIN1) 15OCT15

CHICAGO, ILLINOIS  
CHICAGO O'HARE INTL (ORD)

EC-3: 06 DEC 2018 to 03 JAN 2019

EC-3: 06 DEC 2018 to 03 JAN 2019