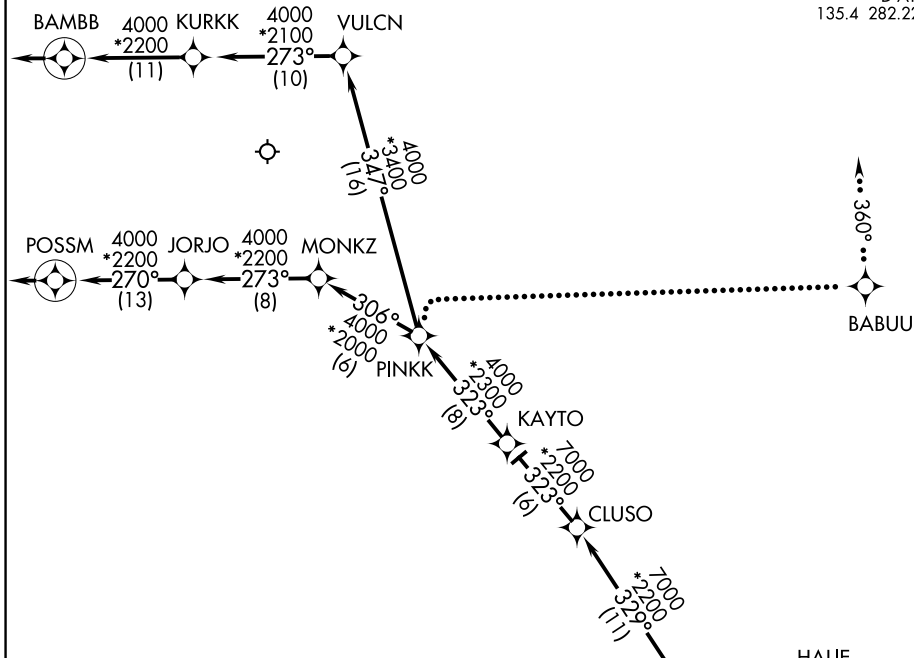


CHICAGO APP CON  
119.0 393.1  
D-ATIS  
135.4 282.225



- NOTE: RADAR required.
- NOTE: RNAV 1.
- NOTE: DME/DME/IRU or GPS required.
- NOTE: Expect possible reroute to WATSN RNAV STAR.

**ARRIVAL ROUTE DESCRIPTION**

From VEECK on track 302° to BOONE, then on track 321° to HANNI, then on track 329° to CLUSO, then on track 323° to KAYTO, then on track 323° to PINKK.

**LANDING RWYS 9L/R:** From PINKK on track 347° to VULCN, then on track 273° to KURKK, then on track 273° to BAMBB, then on track 273°. Expect RADAR vectors to final approach course.

**LANDING RWYS 4L/R, 10L/C/R, 15, 22L/R, 27L/R, 28L/C/R:** From PINKK on track 306° to MONKZ, then on track 273° to JORJO, then on track 270° to POSSM, then on track 270°. Expect RADAR vectors to final approach course.

**LOST COMMUNICATIONS:**

**ORD AIRCRAFT LANDING WEST:** At PINKK, turn right direct BABUU, maintain 5000, then on 360° heading, intercept localizer and execute ILS or LOC Rwy 28R approach.

**ORD AIRCRAFT LANDING EAST:** Standard.

NOTE: Chart not to scale.