

WYNDE EIGHT ARRIVAL (RNAV) Arrival Routes

EC-3: 06 DEC 2018 to 03 JAN 2019

ARRIVAL ROUTE DESCRIPTION

From WYNDE on track 253° to FIYER, then on track 253° to ERNIN, then on track 221° to PAPP, then on track 221° to TUBEZ.

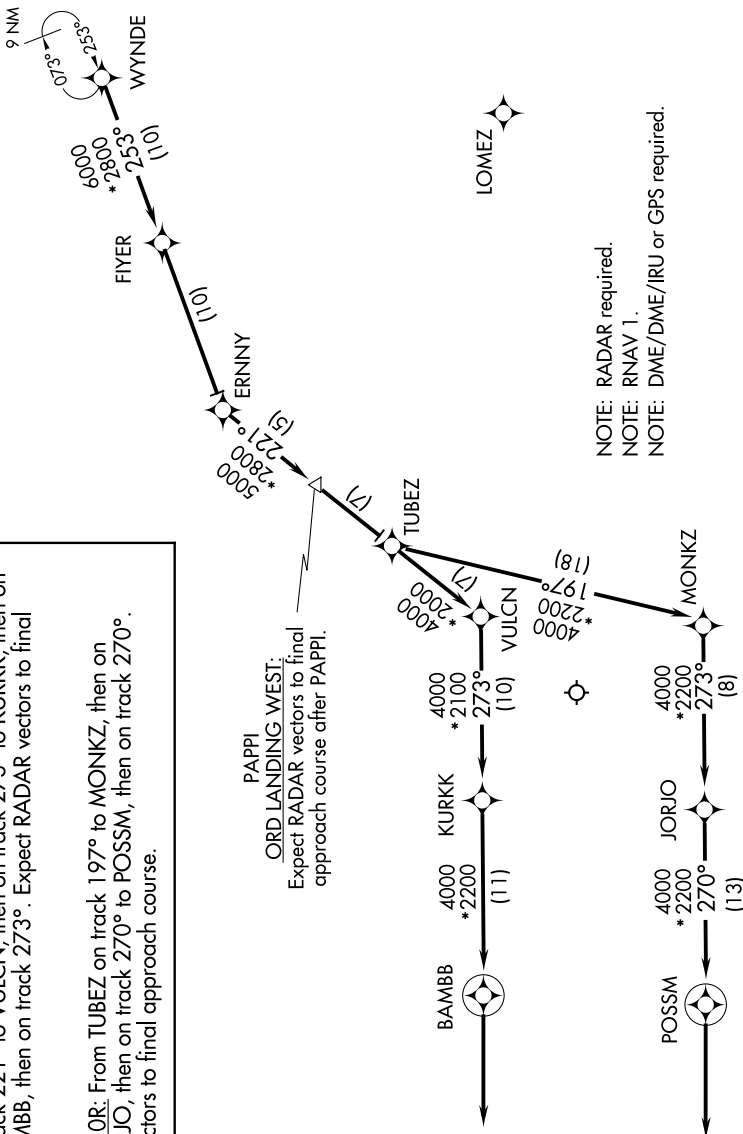
LANDING RWYS 4L/R, 9L/R, 10L/C, 15, 22L/R, 27L/R, 28L/C/R:
From TUBEZ on track 221° to VULCN, then on track 273° to KURKK, then on track 273° to BAMB, then on track 273°. Expect RADAR vectors to final approach course.

LANDING RWY 10R: From TUBEZ on track 197° to MONKZ, then on track 273° to JORJO, then on track 270° to POSSM, then on track 270°. Expect RADAR vectors to final approach course.

PAPP
ORD LANDING WEST:
Expect RADAR vectors to final approach course after PAPP.



D-ATIS
135.4 282.225
CHICAGO APP CON
119.0 393.1



NOTE: RADAR required.
NOTE: RNAV 1.
NOTE: DME/DME/IRU or GPS required.

NOTE: Chart not to scale.

EC-3: 06 DEC 2018 to 03 JAN 2019

WYNDE EIGHT ARRIVAL (RNAV) Arrival Routes