

DARRK TWO DEPARTURE (RNAV)

AL-237 (FAA)

LOS ANGELES INTL (LAX)
LOS ANGELES, CALIFORNIA

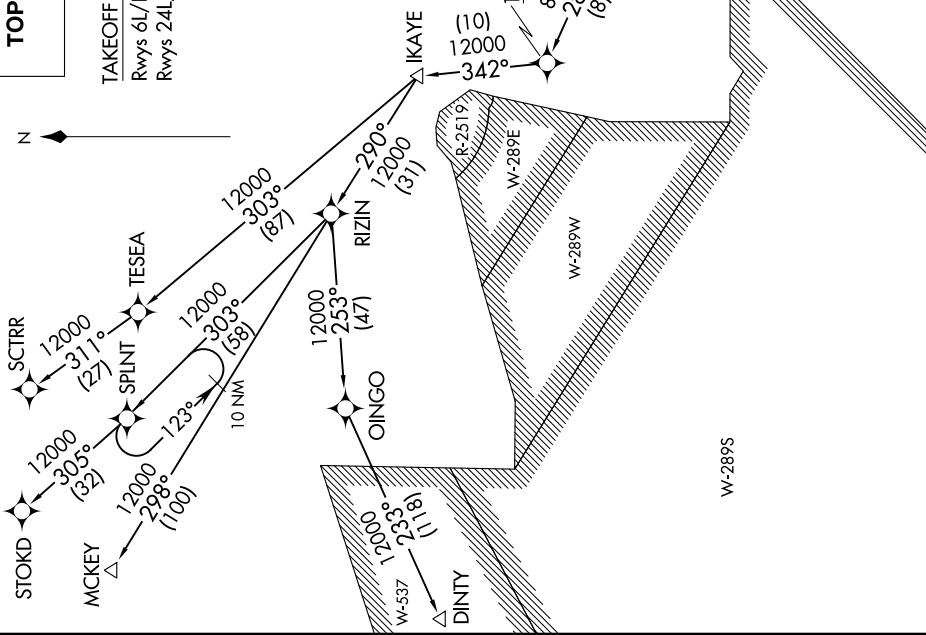
SW-3, 06 DEC 2018 to 03 JAN 2019

D-ATIS DEP 135.65
CLNC DEL 120.35 327.0
CPDLC
GND CON (N) 121.65 327.0
(S) 121.75 327.0
(W) 121.4 327.0
LOS ANGELES TOWER (N) 133.9 239.3
(S) 120.95 379.1
SOCAL DEP CON 124.3 363.2 (045°-224°)
125.2 263.025 (225°-044°)

**TOP ALTITUDE:
FL230**

TAKEOFF MINIMUMS
Rwys 6L/R, 7L/R: NA - ATC.
Rwys 24L/R, 25L/R: Standard with a minimum climb of 500' per NM to 640'.

NOTE: RNAV 1.
NOTE: RADAR required.
NOTE: STOKD, SCTRR and MCKEY transitions: DME/DME/IRU or GPS required.
NOTE: DINTY transitions: GPS only.
NOTE: Turbojet aircraft only.



(NARRATIVE ON FOLLOWING PAGE)

NOTE: Chart not to scale.

DARRK TWO DEPARTURE (RNAV)

LOS ANGELES, CALIFORNIA
LOS ANGELES INTL (LAX)

SW-3, 06 DEC 2018 to 03 JAN 2019