

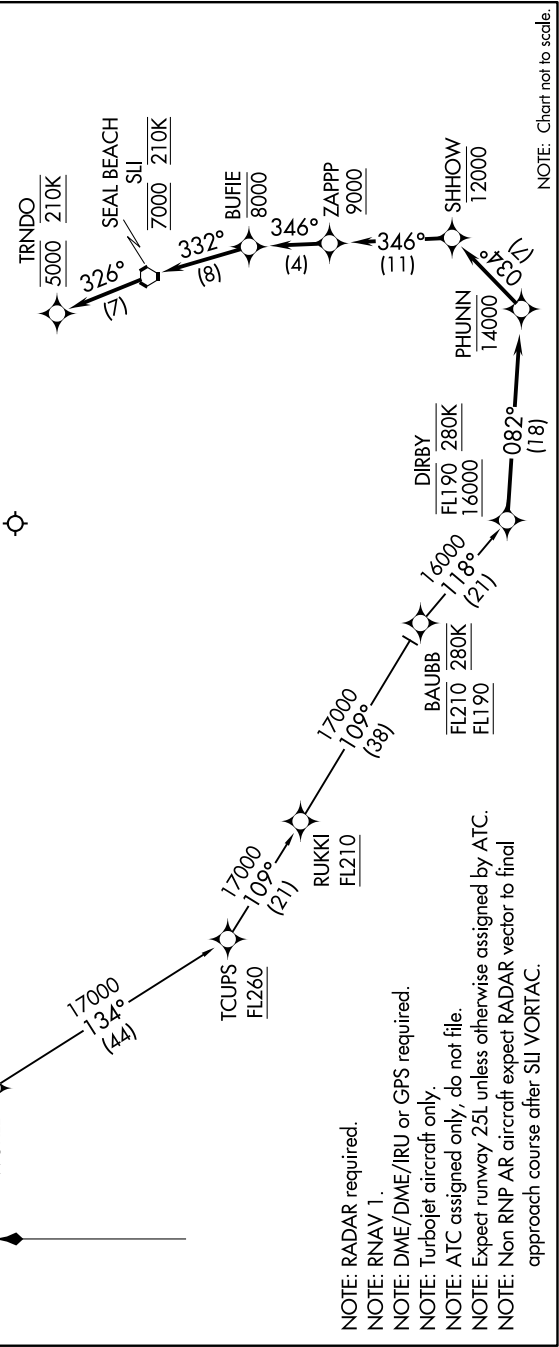
DIRBY ONE ARRIVAL (RNAV)

ARRIVAL ROUTE DESCRIPTION

RDHOT TRANSITION (RDHOT.DIRBY1)
TILLT TRANSITION (TILLT.DIRBY1)

From DIRBY on track 082° to cross PHUNN at or below 14000, then on track 034° to cross SHHOW at or below 12000, then on track 346° to cross ZAPPP at or above 9000, then on track 346° to cross BUFILE at or below 8000, then on track 332° to cross SIJ at or below 7000 and at 210K, then on track 326° to cross TRNDO at 5000 and at 210K. Expect RADAR vectors to ILS or RNAV (RNP) Z RWY 25L final approach course.

LOST COMMUNICATIONS
 In the event of lost communications: RNP arrivals proceed on the RNAV (RNP) Z RWY 25L approach. All other aircraft proceed on the ILS or LOC RWY 25L.



NOTE: Chart not to scale.