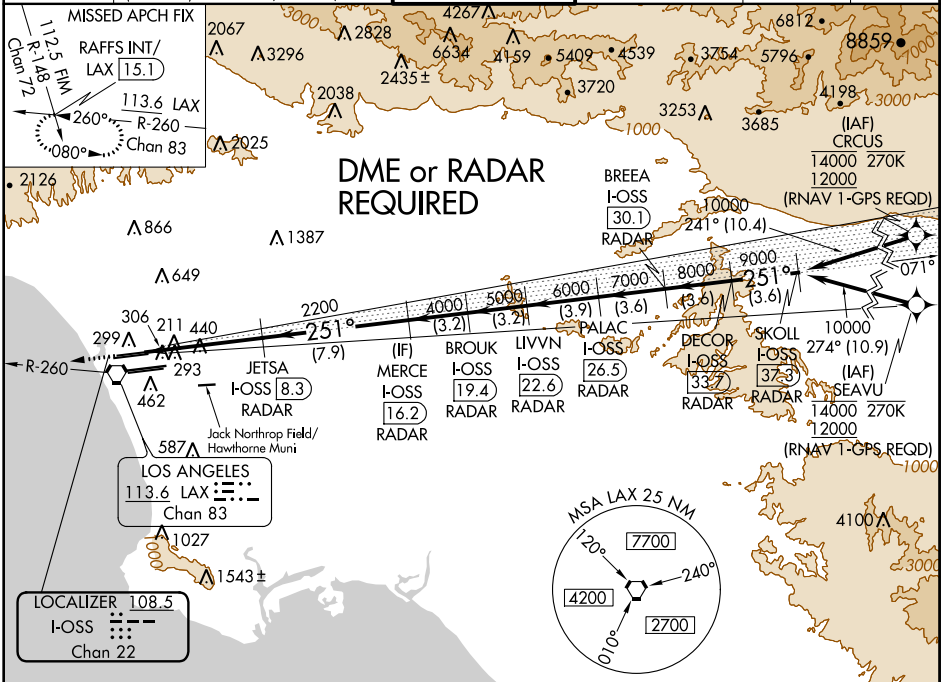


LOC/DME I-OSS 108.5 Chan 22	APP CRS 251°	Rwy Idg TDZE Apt Elev	8925 122 128
-------------------------------------------------	------------------------	-----------------------------	-----------------------------------------

ILS RWY 24R (CAT II & III)

LOS ANGELES INTL (LAX)

<p>▼ DME or RADAR required. Simultaneous approach authorized. Simultaneous approach authorized with HHR.</p>		<p>ALSF-2</p>	<p>MISSED APPROACH: Climb to 2000 on heading 251° and LAX VORTAC R-260 to RAFFS INT/LAX 15.1 DME and hold.</p>		
<p>D-ATIS ARR 133.8 DEP 135.65</p>	<p>SOCAL APP CON 124.3 363.2 124.5 235.975 (APCH FM WEST) (225°-044°) 124.9 269.0 128.5 360.7 (090°-224°) (045°-089°)</p>	<p>LOS ANGELES TOWER N 133.9 239.3 S 120.95 379.1</p>	<p>GND CON N 121.65 327.0 S 121.75 327.0 W 121.4 327.0</p>	<p>CLNC DEL 120.35 327.0</p>	<p>CPDLC</p>



ELEV 128	TDZE 122	2000	LAX R-260	RAFFS INT	<p>VGSI and ILS glidepath not coincident (VGSI Angle 3.00/TCH 73).</p>					
		<p> JETSA I-OSS (8.3) RADAR BROUK I-OSS (19.4) RADAR LIVVN I-OSS (22.6) RADAR PALAC I-OSS (26.5) RADAR BREA I-OSS (30.1) RADAR DECOR I-OSS (33.7) RADAR SKOLL I-OSS (37.3) RADAR </p>								
<p>TDZ/CL Rwy 6R, 7L, 24R, and 25L HIRL all Rwy</p>		<p> 1025' → 6.4 NM → 7.9 NM → 3.2 NM 3.2 NM 3.9 NM 3.6 NM 3.6 NM 3.6 NM → CATEGORY A B C D </p>								
<p>S-ILS 24R</p>		<p>CAT II RA 118/12 100 DA 222</p>								
<p>S-ILS 24R</p>		<p>CAT III RVR 06</p>								
<p>CATEGORY II & III ILS - SPECIAL AIRCREW & AIRCRAFT CERTIFICATION REQUIRED</p>										

SW-3, 06 DEC 2018 to 03 JAN 2019

SW-3, 06 DEC 2018 to 03 JAN 2019