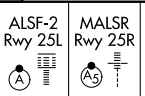


LOC/DME I-LAX	APP CRS	Rwy Idg	25L	25R
109.9	251°	Elev	11095	11134
Chan 36		TDZE	104	104
		Apt Elev	128	128

ILS or LOC RWY 25L

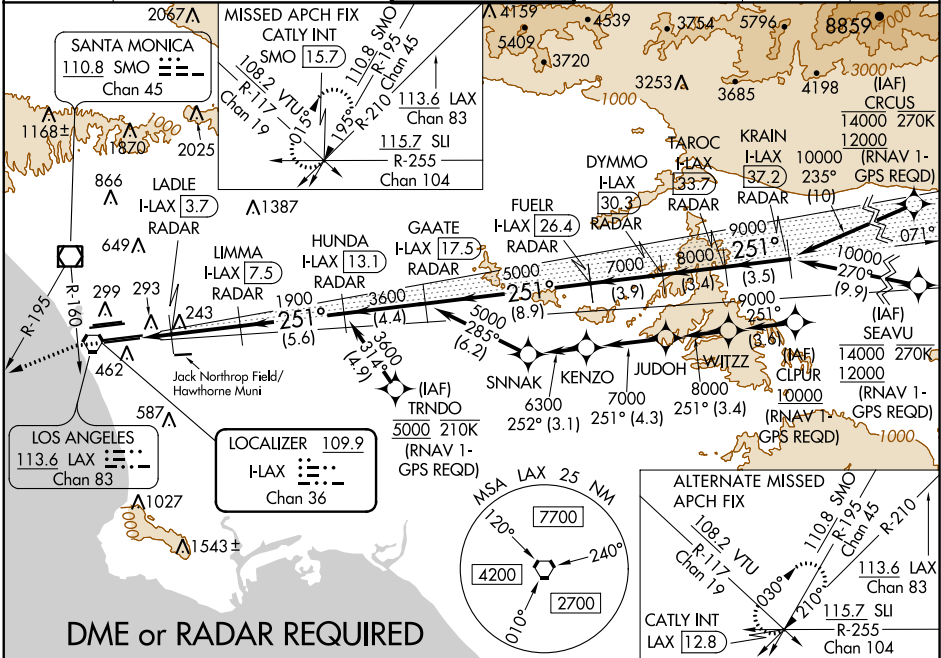
LOS ANGELES INTL (LAX)

▼ DME or RADAR required. Simultaneous approach authorized. Simultaneous approach authorized with HHR. LOC procedure NA during simultaneous operations with HHR LOC RWY 25.



MISSED APPROACH: Climb to 2000 on heading 251° until crossing the SMO R-160, then left turn on heading 236° and on the SMO R-195 to CATLY INT/SMO 15.7 DME and hold.

D-ATIS ARR 133.8 DEP 135.65	SOCAL APP CON 124.3 363.2 (APCH FM WEST) 124.5 235.975 (225°-044°)	124.9 269.0 (090°-224°) 128.5 360.7 (045°-089°)	LOS ANGELES TOWER N 133.9 239.3 S 120.95 379.1	GND CON N 121.65 327.0 S 121.75 327.0 W 121.4 327.0	CLNC DEL 120.35 327.0	CPDLC
---	--	--	--	---	---	-------



SW-3, 06 DEC 2018 to 03 JAN 2019

SW-3, 06 DEC 2018 to 03 JAN 2019

2000 hdg 251°	SMO R-160 hdg 236°	SMO R-195	CATLY INT	VGSI and ILS glidepath not coincident (VGSI Angle 3.00/TCH 70).					
*LOC only	LADLE I-LAX 3.7 RADAR	LIMMA I-LAX 7.5 RADAR	HUNDA I-LAX 13.1 RADAR	GAATE I-LAX 17.5 RADAR	FUEL I-LAX 26.4 RADAR	DYMMO I-LAX 30.3 RADAR	TAROC I-LAX 33.7 RADAR	KRAIN I-LAX 37.2 RADAR	
	I-LAX 3.2	1900	3600	5000	7000	8000	9000	10000	
	1.2	0.6	3.7 NM	5.6 NM	4.4 NM	8.9 NM	3.9 NM	3.4 NM	3.5 NM
CATEGORY	A		B		C		D		
S-ILS 25L	304/18		200 (200-½)						
S-LOC 25L	540/24		436 (500-½)		540/40		436 (500-¾)		
SIDESTEP 25R	540/55		436 (500-1)		540-1½		436 (500-1½)		

