

|   |                        |  |
|---|------------------------|--|
| LOC/DME I-UWU<br><b>108.5</b><br>Chan <b>22</b> | APP CRS<br><b>071°</b> | Rwy Idg<br>6L <b>8566</b> 6R <b>9748</b><br>TDZE<br><b>119</b> <b>116</b><br>Apt Elev<br><b>128</b> <b>128</b> |
|---|------------------------|--|

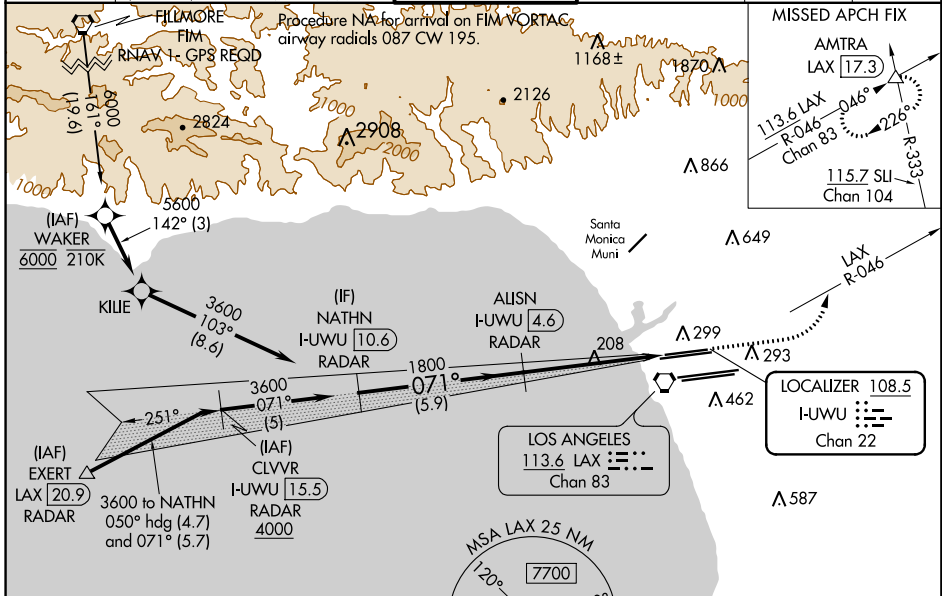
# ILS or LOC RWY 6L

LOS ANGELES INTL (LAX)

**▼** Inop table does not apply to Sidestep 6R Cats A/B. For inop ALS, increase S-LOC 6L Cat C/D visibility to RVR 5500. Simultaneous approach authorized.

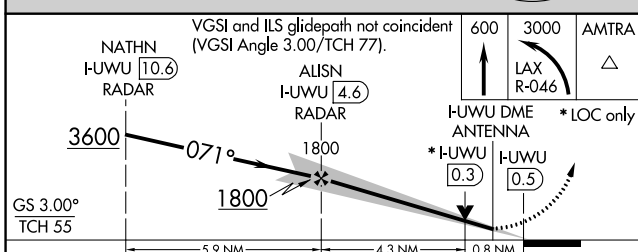
|              |              |   |
|--------------|--------------|---|
| MALSR Rwy 6L | MALSR Rwy 6R | MISSED APPROACH: Climb to 600 then climbing left turn to 3000 on LAX VORTAC R-046 to AMTRA INT/LAX 17.3 DME and hold. |
|--------------|--------------|---|

|   |  |  |   |   |       |
|---|--|--|---|---|-------|
| D-ATIS<br>ARR <b>133.8</b><br>DEP <b>135.65</b> | SOCAL APP CON<br><b>124.3 363.2</b> <b>124.9 269.0</b><br>(APCH FM WEST) (090°-224°)<br><b>124.5 235.975</b> <b>128.5 360.7</b><br>(225°-044°) (045°-089°) | LOS ANGELES TOWER<br><b>N 133.9 239.3</b><br><b>S 120.95 379.1</b> | GND CON<br><b>N 121.65 327.0</b><br><b>S 121.75 327.0</b><br><b>W 121.4 327.0</b> | CLNC DEL<br><b>120.35</b><br><b>327.0</b> | CPDLC |
|---|--|--|---|---|-------|



Procedure NA for arrivals at EXERT on V25 southwest bound, V27 northwest bound.

## DME or RADAR REQUIRED



|          |             |
|----------|-------------|
| ELEV 128 | TDZE 6L 119 |
|          | TDZE 6R 116 |

|             |                    |                    |   |                        |
|-------------|--------------------|--------------------|---|------------------------|
| CATEGORY    | A                  | B                  | C | D                      |
| S-ILS 6L    | 369/24 250 (300-½) |                    |   |                        |
| S-LOC 6L    | 460/24 341 (400-½) | 460/30 341 (400-¾) |   |                        |
| SIDESTEP 6R | 460/55 344 (400-1) |                    |   | 460-1½<br>344 (400-1½) |

071° 5.1 NM from FAF

TDZ/CL Rwy 6R, 7L, 24R, and 25L  
HIRL all Rwy

FAF to MAP 5.1 NM

|         |      |      |      |      |      |
|---------|------|------|------|------|------|
| Knots   | 60   | 90   | 120  | 150  | 180  |
| Min:Sec | 5:06 | 3:24 | 2:33 | 2:02 | 1:42 |