

LOC/DME I-MKZ 109.9 Chan 36	APP CRS 071°	Rwy Idg 7R 11095 11259 7L TDZE 128 128 Apt Elev 128 128
--	------------------------	---

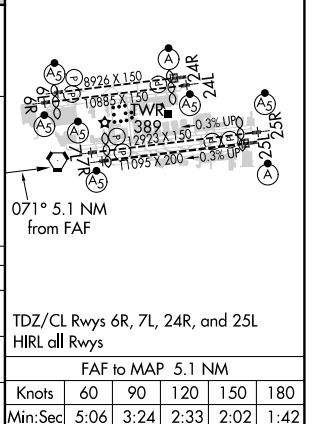
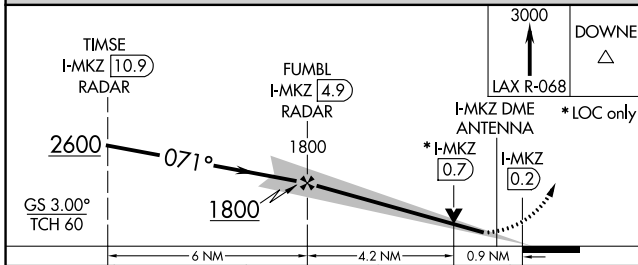
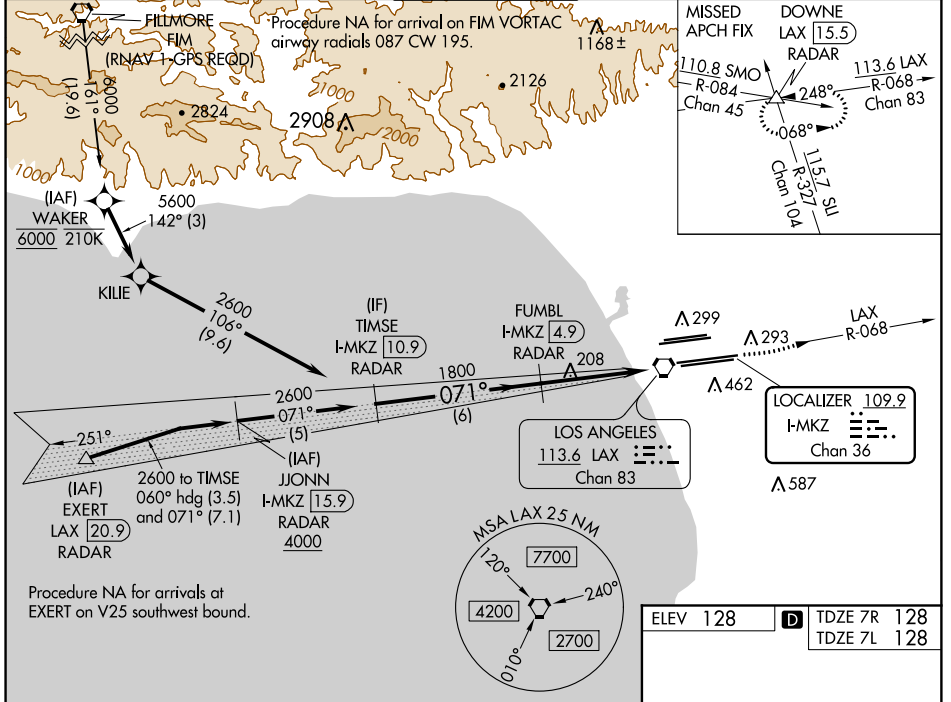
ILS or LOC RWY 7R

LOS ANGELES INTL (LAX)

Simultaneous approach authorized. DME or RADAR required. Inop table does not apply to Sidestep Rwy 7L Cats A and B. #RVR 1800 authorized with use of FD or AP or HUD to DA.

MALSR Rwy 7R	MALSR Rwy 7L	MISSED APPROACH: Climb to 3000 on LAX VORTAC R-068 to DOWNE INT/ LAX 15.5 DME/RADAR and hold.
--------------	--------------	---

D-ATIS ARR 133.8 DEP 135.65	SOCAL APP CON 124.3 363.2 (APCH FM WEST) 124.5 235.975 (225°-044°)	124.9 269.0 (090°-224°) 128.5 360.7 (045°-089°)	LOS ANGELES TOWER N 133.9 239.3 S 120.95 379.1	GND CON N 121.65 327.0 S 121.75 327.0 W 121.4 327.0	CINC DEL 120.35 327.0	CPDLC
---	--	--	--	---	---	-------



SW-3, 06 DEC 2018 to 03 JAN 2019

SW-3, 06 DEC 2018 to 03 JAN 2019