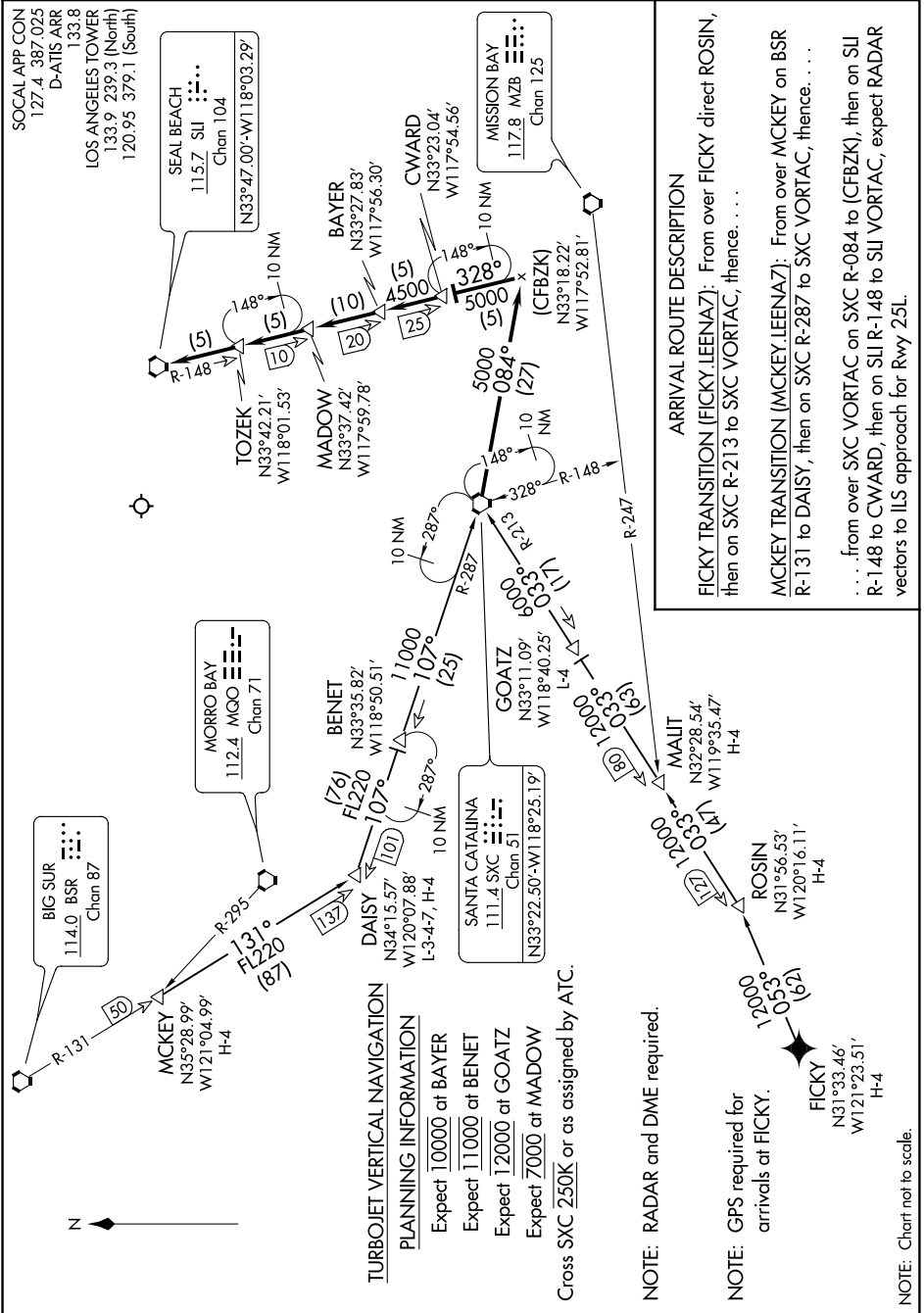


LEENA SEVEN ARRIVAL

AL-237 (FAA)

LOS ANGELES INTL (LAX)
LOS ANGELES, CALIFORNIA

SW-3, 06 DEC 2018 to 03 JAN 2019



LEENA SEVEN ARRIVAL

LOS ANGELES, CALIFORNIA
LOS ANGELES INTL (LAX)

SW-3, 06 DEC 2018 to 03 JAN 2019

SOCAL APP CON
127.4 387.025
D-ATIS ARR
133.8
LOS ANGELES TOWER
133.9 239.3 (North)
120.95 379.1 (South)

SEAL BEACH
115.7 SU
Chan 104
N33°47.00'-W118°03.29'

BAYER
N33°37.42'
W117°56.30'

CWARD
N33°23.04'
W117°54.56'

MISSION BAY
117.8 MZB
Chan 125

MORRO BAY
112.4 MOO
Chan 71

BENET
N33°35.82'
W118°50.51'

SANTA CATALINA
111.4 SXC
Chan 51
N33°22.50'-W118°25.19'

BIG SUR
114.0 BSR
Chan 87

MCKEY
N35°28.99'
W121°04.99'

DAISY
N34°15.57'
W120°07.88'

GOATZ
N33°11.09'
W118°40.25'

MALIT
N32°28.54'
W119°35.47'

ROSIN
N31°56.53'
W120°16.11'

FICKY
N31°33.46'
W121°23.51'

ARRIVAL ROUTE DESCRIPTION

FICKY TRANSITION (FICKY.LEENA7): From over FICKY direct ROSIN, then on SXC R-213 to SXC VORTAC, thence. . . .

MCKEY TRANSITION (MCKEY.LEENA7): From over MCKEY on BSR R-131 to DAISY, then on SXC R-287 to SXC VORTAC, thence. . . .

. . . from over SXC VORTAC on SXC R-084 to (CFBZK), then on SUJ R-148 to CWARD, then on SUJ R-148 to SUJ VORTAC, expect RADAR vectors to ILS approach for Rwy 25L.