

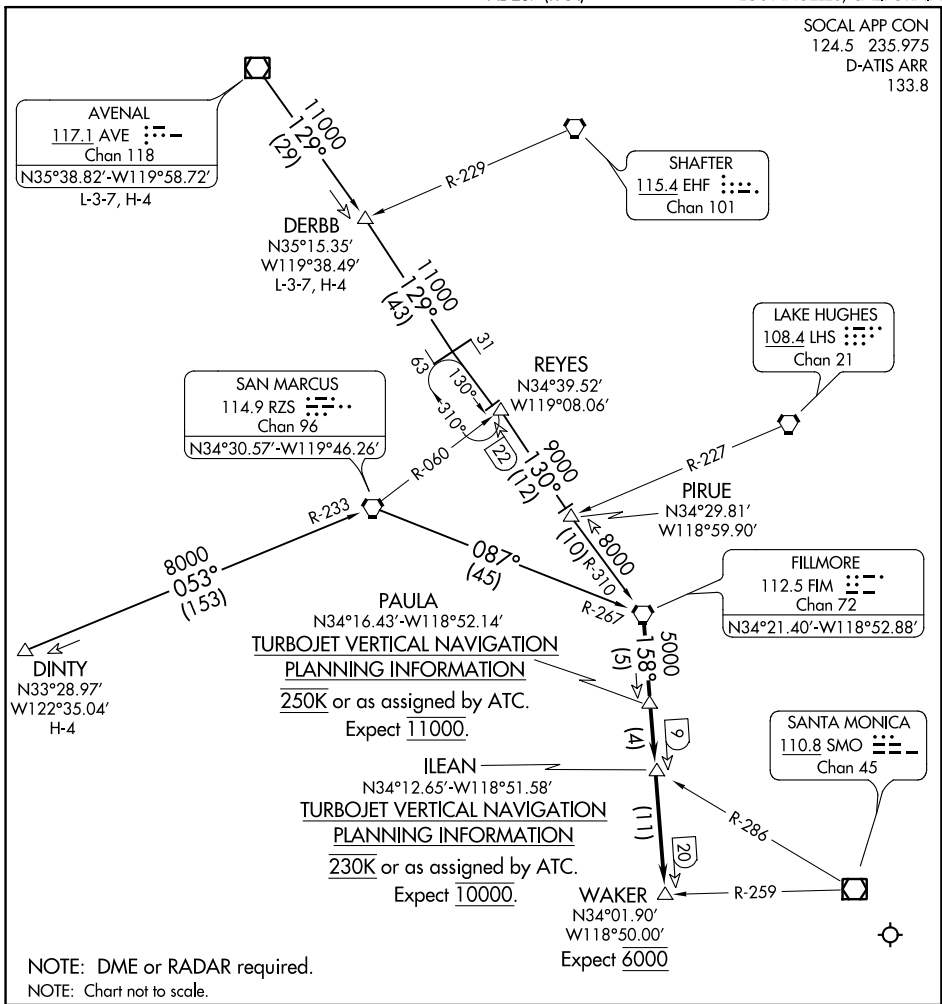
MOORPARK FOUR ARRIVAL

AL-237 (FAA)

LOS ANGELES INTL (LAX)

LOS ANGELES, CALIFORNIA

SOCAL APP CON
124.5 235.975
D-ATIS ARR
133.8



SW-3, 06 DEC 2018 to 03 JAN 2019

SW-3, 06 DEC 2018 to 03 JAN 2019

ARRIVAL ROUTE DESCRIPTION

AVENAL TRANSITION (AVE.MOOR4): From over AVE VOR/DME on AVE R-129 and FIM R-310 to FIM VORTAC. Thence. . .

DERBB TRANSITION (DERBB.MOOR4): From over DERBB INT on AVE R-129 and FIM R-310 to FIM VORTAC. Thence. . .

DINTY TRANSITION (DINTY.MOOR4): From over DINTY INT on RZS R-233 to RZS VORTAC. Then on RZS R-087 and FIM R-267 to FIM VORTAC. Thence. . .

. . . From over FIM VORTAC via FIM R-158 to WAKER INT. For Runways 6L/R or 7L/R: From WAKER INT expect vector to final approach course for Los Angeles Intl Airport.

MOORPARK FOUR ARRIVAL