

OSHNN EIGHT DEPARTURE (RNAV)

AL-237 (FAA)

LOS ANGELES INTL (LAX)
LOS ANGELES, CALIFORNIA

SW-3, 06 DEC 2018 to 03 JAN 2019

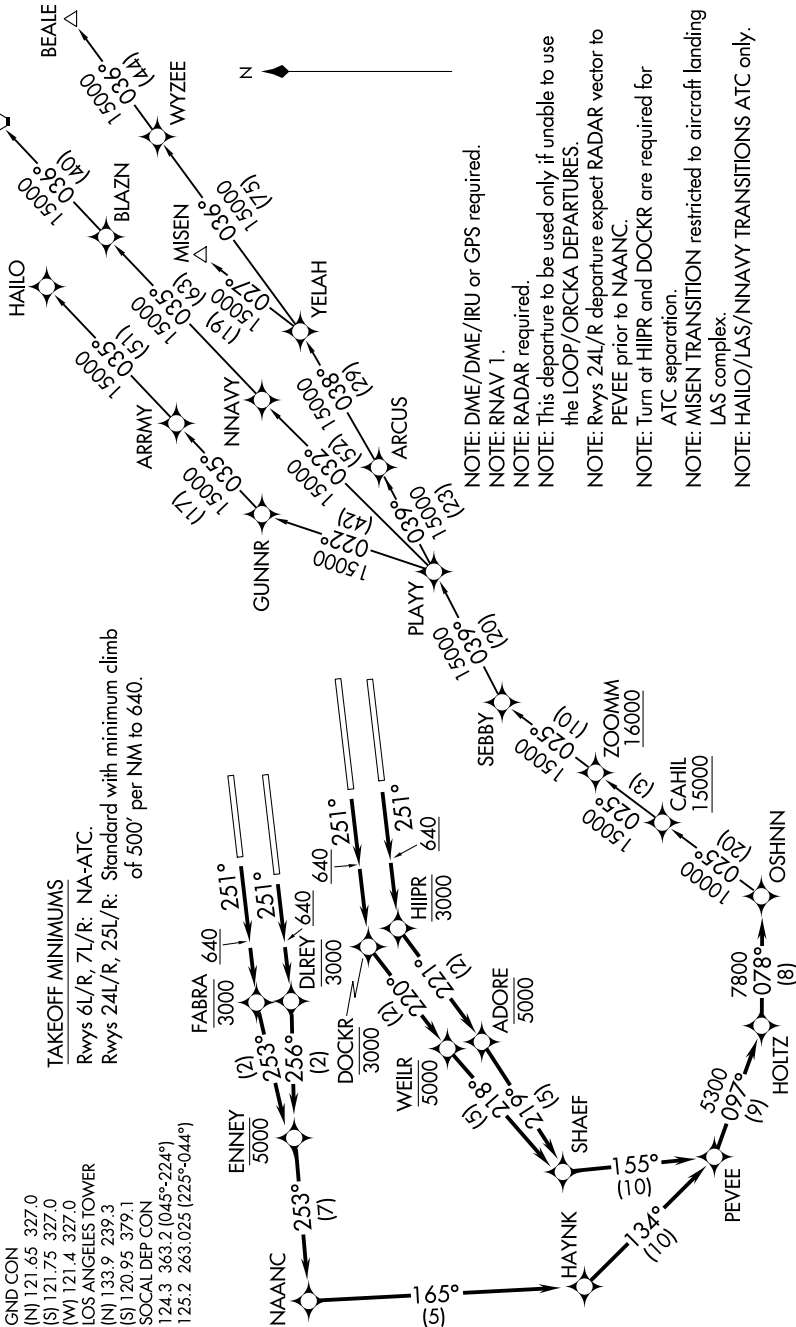
**TOP ALTITUDE:
17000**

TAKEOFF MINIMUMS

Rwys 6L/R, 7L/R: NA-ATC.
Rwys 24L/R: 25L/R: Standard with minimum climb
of 500' per NM to 640.

D-ATIS DEP
135.65
CLNC DEL
120.35 327.0
CPDLC
GND CON
(N) 121.65 327.0
(S) 121.75 327.0
(W) 121.4 327.0

LOS ANGELES TOWER
(N) 133.9 329.3
(S) 120.95 379.1
SOCAL DEP CON
124.3 363.2 (045°-224°)
125.2 263.025 (225°-044°)



NOTE: DME/DME/IRU or GPS required.

NOTE: RNAV 1.

NOTE: RADAR required.

NOTE: This departure to be used only if unable to use the LOOP/ORCKA DEPARTURES.

NOTE: Rwys 24L/R departure expect RADAR vector to PEVEE prior to NAAANC.

NOTE: Turn at HIJPR and DOCKR are required for ATC separation.

NOTE: MISEN TRANSITION restricted to aircraft landing LAS complex.

NOTE: HAILO/LAS/NNAVY TRANSITIONS ATC only.

(NARRATIVE ON FOLLOWING PAGE)

NOTE: Chart not to scale.

OSHNN EIGHT DEPARTURE (RNAV)

LOS ANGELES, CALIFORNIA
LOS ANGELES INTL (LAX)

SW-3, 06 DEC 2018 to 03 JAN 2019