

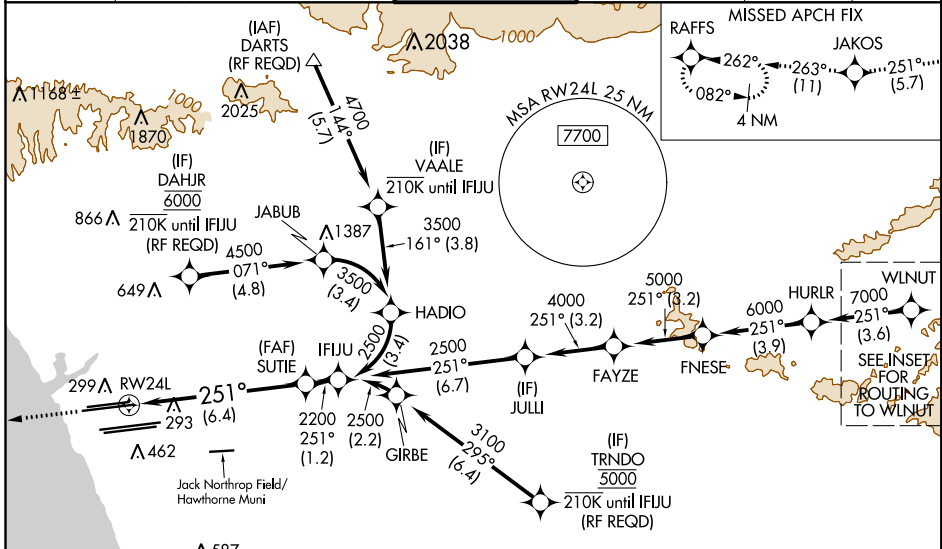
APP CRS	Rwy Idg	9483
251°	TDZE	123
	Apt Elev	128

RNAV (RNP) Z RWY 24L

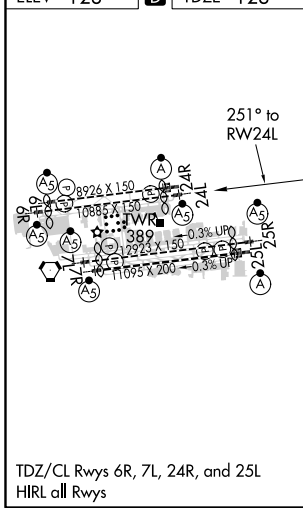
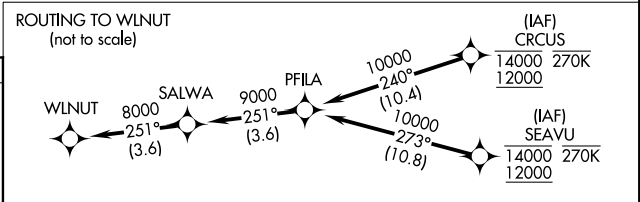
LOS ANGELES INTL (LAX)

<p>▼ For uncompensated Baro-VNAV systems, procedure NA below 5°C (41°F) or above 54°C (130°F). Simultaneous approach authorized. Simultaneous approach authorized with KHHR. GPS required. For inop ALS, increase RNP 0.15 all Cats visibility to 1½ SM.</p>	<p>MALSR</p>	<p>MISSED APPROACH: Climb to 2000 on track 251° to JAKOS and track 263° to RAFFS and hold.</p>
---	--------------	--

<p>D-ATIS</p> <p>ARR 133.8</p> <p>DEP 135.65</p>	<p>SOCAL APP CON</p> <p>124.3 363.2 (APCH FM WEST)</p> <p>124.9 269.0 (090°-224°)</p> <p>124.5 235.975 (225°-044°)</p> <p>128.5 360.7 (045°-089°)</p>	<p>LOS ANGELES TOWER</p> <p>N 133.9 239.3</p> <p>S 120.95 379.1</p>	<p>GND CON</p> <p>N 121.65 327.0</p> <p>S 121.75 327.0</p> <p>W 121.4 327.0</p>	<p>CLNC DEL</p> <p>120.35</p> <p>327.0</p>	<p>CPDLC</p>
--	---	---	--	--	--------------



ELEV 128	D	TDZE 123
----------	----------	----------



2000	JAKOS	tr 263°	RAFFS	See planview for multiple IF locations.	IFJU
tr 251°					
VGSi and RNAV glidepath not coincident (VGSi Angle 3.00/TCH 79).					
RWY 24L					
GP 3.00° TCH 59					

CATEGORY	A	B	C	D
RNP 0.15 DA		545/50	422 (500-1)	
RNP 0.30 DA		592/60	469 (500-1½)	

AUTHORIZATION REQUIRED

SW-3, 06 DEC 2018 to 03 JAN 2019

SW-3, 06 DEC 2018 to 03 JAN 2019