

# RNAV (RNP) Z RWY 24R

LOS ANGELES INTL (LAX)

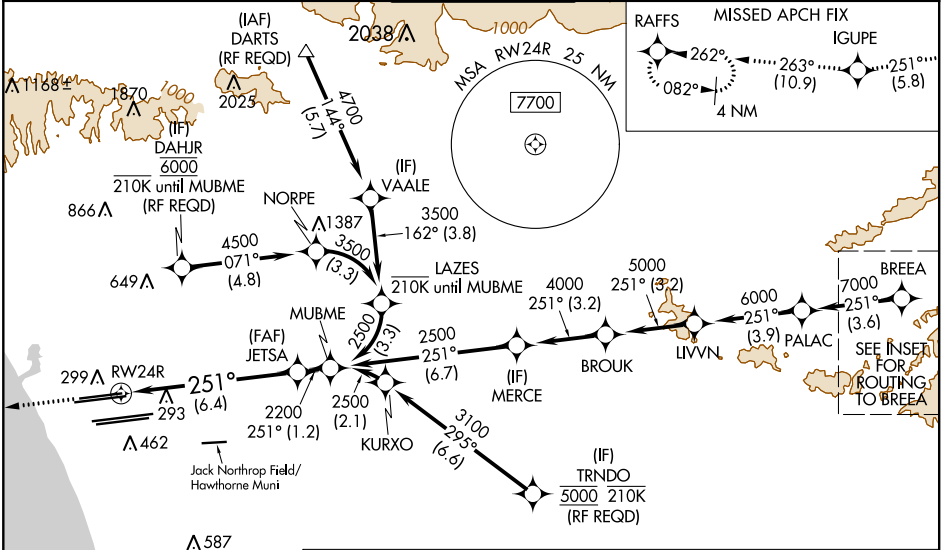
APP CRS	Rwy Idg	<b>8925</b>
<b>251°</b>	TDZE	<b>122</b>
	Apt Elev	<b>128</b>

For uncompensated Baro-VNAV systems, procedure NA below 5°C (41°F) or above 54°C (130°F). GPS required. For inop ALS, increase RNP 0.15 all Cats visibility to RVR 6000 and RNP 0.30 all Cats visibility to 1 1/2 SM. Simultaneous approach authorized. Simultaneous approach authorized with HHR.

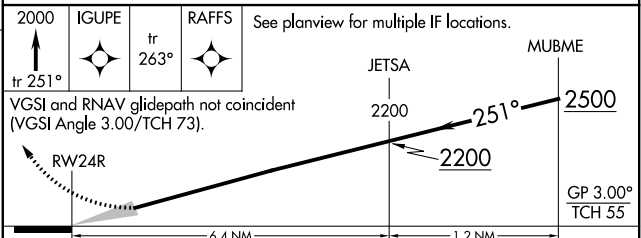
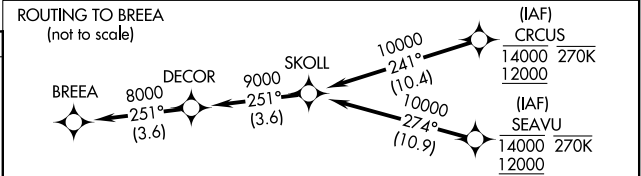
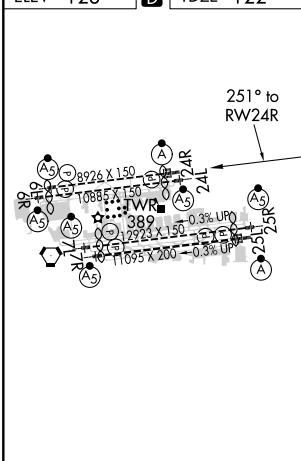
ALSF-2

MISSED APPROACH: Climb to 2000 on track 251° to IGUPE and on track 263° to RAFFS and hold.

D-ATIS	SOCAL APP CON		LOS ANGELES TOWER	GND CON	CLNC DEL	CPDLC
ARR <b>133.8</b>	<b>124.3 363.2</b>	<b>124.9 269.0</b>	<b>N 133.9 239.3</b>	<b>N 121.65 327.0</b>	<b>120.35</b>	
DEF <b>135.65</b>	<b>124.5 235.975</b>	<b>128.5 360.7</b>	<b>S 120.95 379.1</b>	<b>S 121.75 327.0</b>	<b>327.0</b>	
	(225°-044°)	(090°-224°)		<b>W 121.4 327.0</b>		



ELEV 128	<b>D</b>	TDZE 122
----------	----------	----------



CATEGORY	A	B	C	D
RNP 0.15 DA		484/40	362 (400-34)	
RNP 0.30 DA		586/60	464 (500-1¼)	

TDZ/CL Rwy's 6R, 7L, 24R, and 25L  
HIRL all Rwy's

**AUTHORIZATION REQUIRED**

SW-3, 06 DEC 2018 to 03 JAN 2019

SW-3, 06 DEC 2018 to 03 JAN 2019